



PR170S SLIDING & STACKING DOOR SYSTEM



EPCO USA
ARCHITECTURAL
HARDWARE
SOLUTIONS

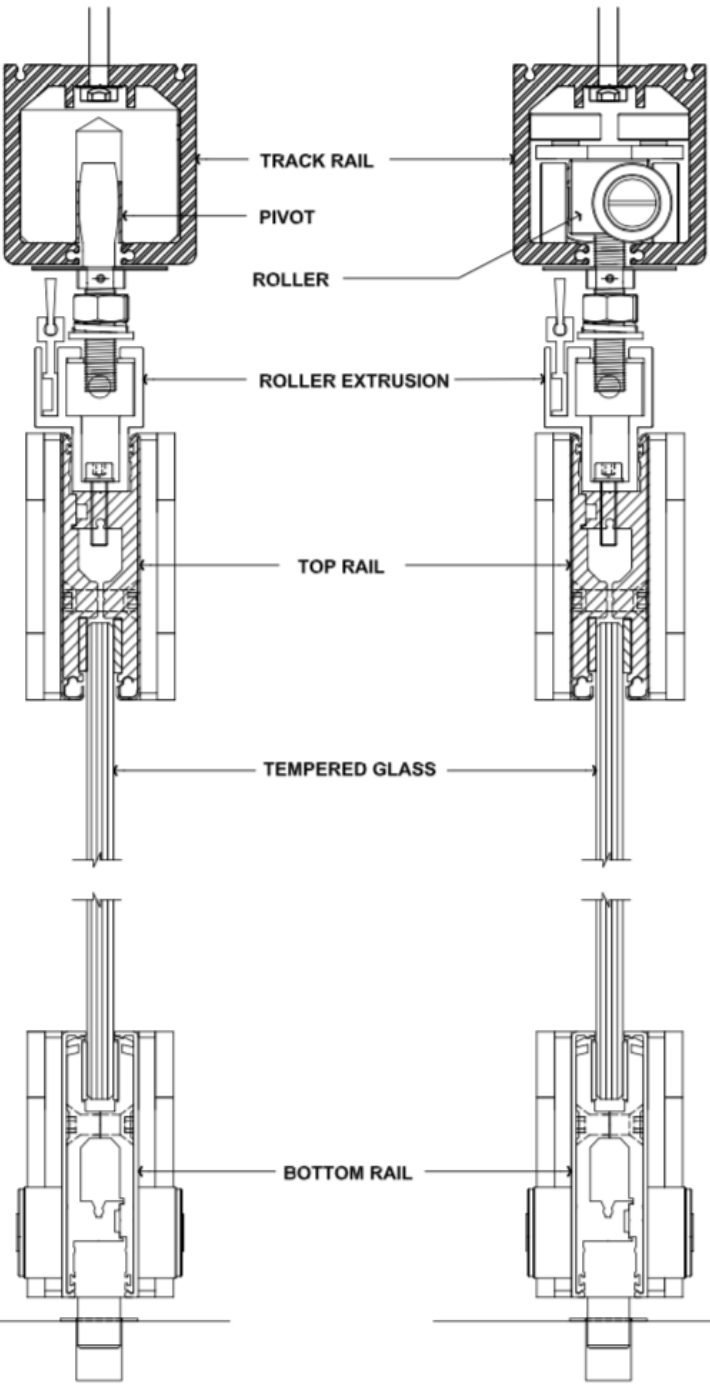
Website:
Email:
Telephone:

www.epcocorp.com
info@epcocorp.com
866.313.3726

PR170S SYSTEM
DESIGN

End Panel/Swing Door

Sliding Panel



PRODUCT
INFORMATION

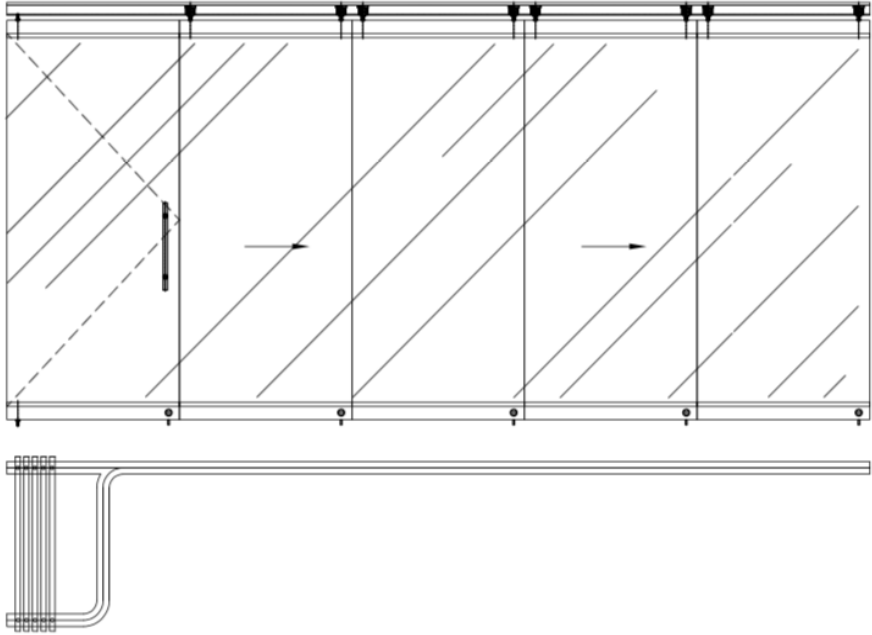
- RSPR track
- Aluminum profile
- Door rail
- Aluminum profile with stainless steel cover
- Finish:
- SP - Stainless polished
 - SS - Stainless satin

Capacity:

- Maximum swing door weight: 180KG (396LB)
- Maximum sliding door weight: 150KG (330LB)
- Maximum Door / Panel Height: 2500mm (98IN)
- Maximum glass panels: 9PCS
- Glass thickness: 10mm (3/8") and 12mm (1/2")

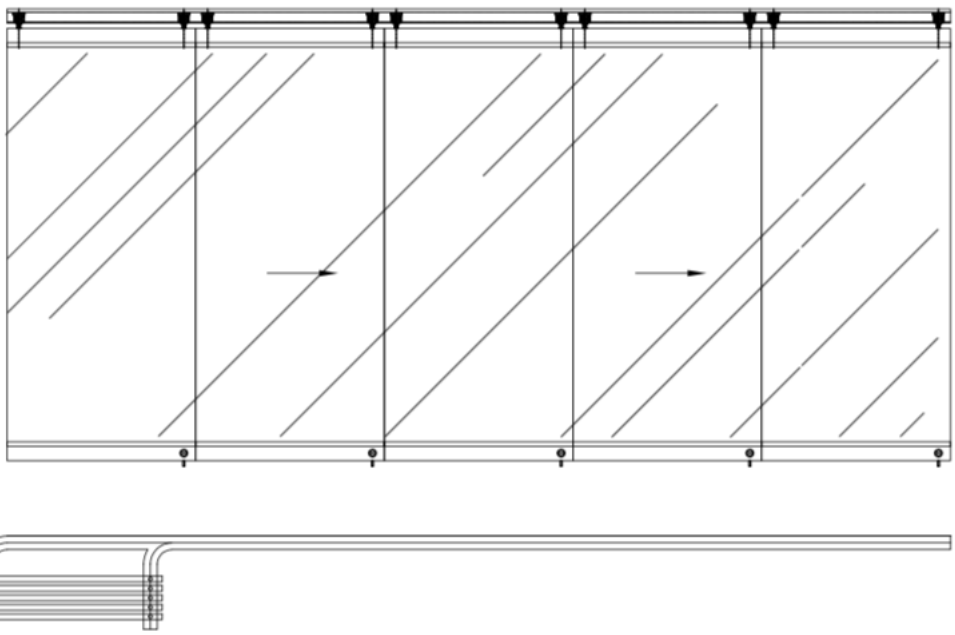
DOOR TYPE 1

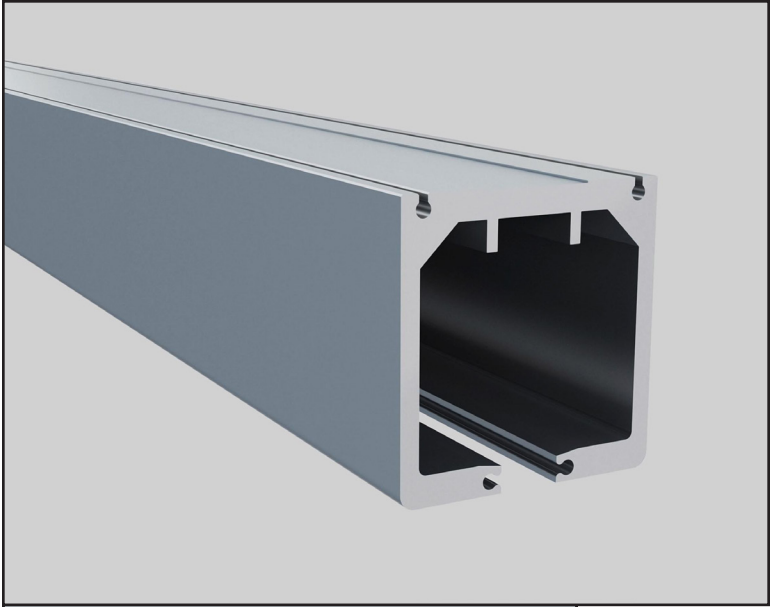
Stacking position perpendicular to travel direction
1 swing door and 4 sliding panels are illustrated



DOOR TYPE 2

Stacking position parallel to travel direction
5 sliding panels are illustrated



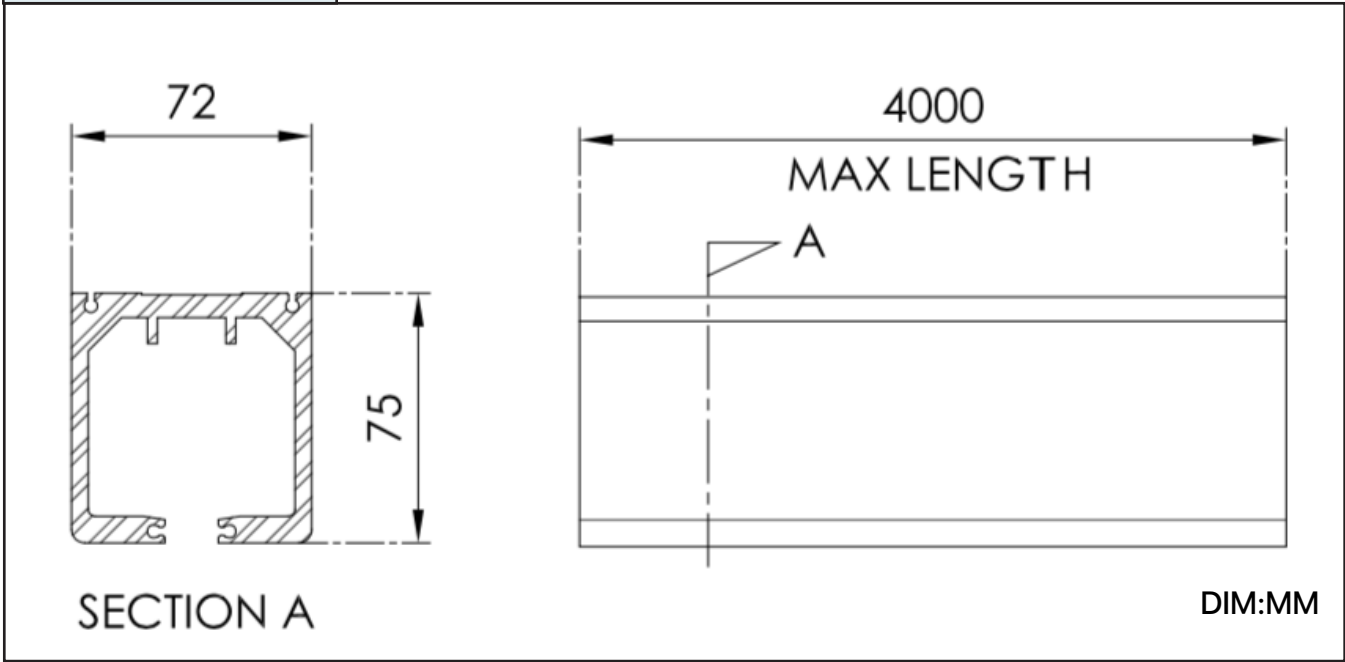


**PRODUCT
INFORMATION**

Material: Aluminum Profile
Finish: Clear Anodized
Maximum Length: 4000mm (13FT)

17.400 TRACK

**PRODUCT
DIMENSION**

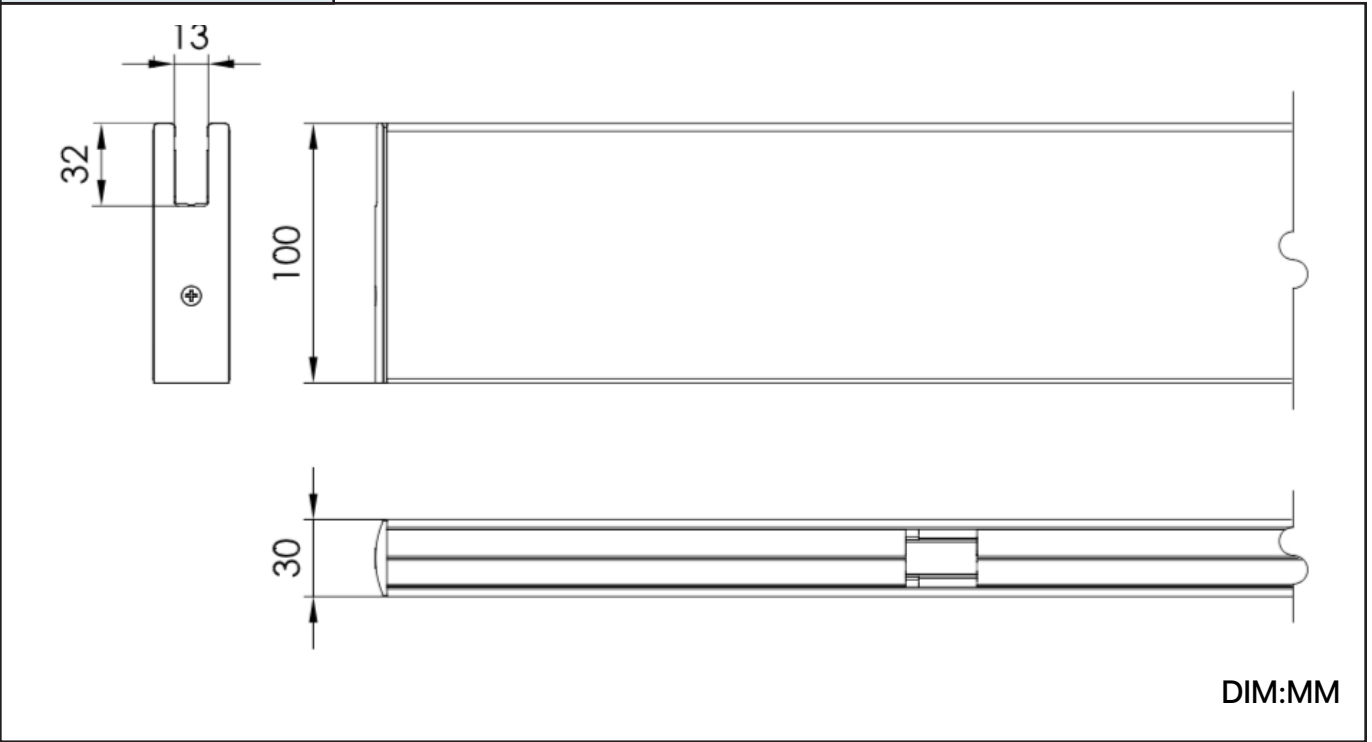


**PRODUCT
INFORMATION**

Material:
• Aluminum Profile
• SUS 304 Stainless Steel Cover
Finish:
• SP-Stainless Polished
• SS-Stainless Satin
Maximum Length: 1250mm (49IN)

04.100 DOOR RAIL

**PRODUCT
DIMENSION**





PRODUCT INFORMATION

Material:

- Aluminum Profile
- SUS 304 Stainless Steel Cover

Finish:

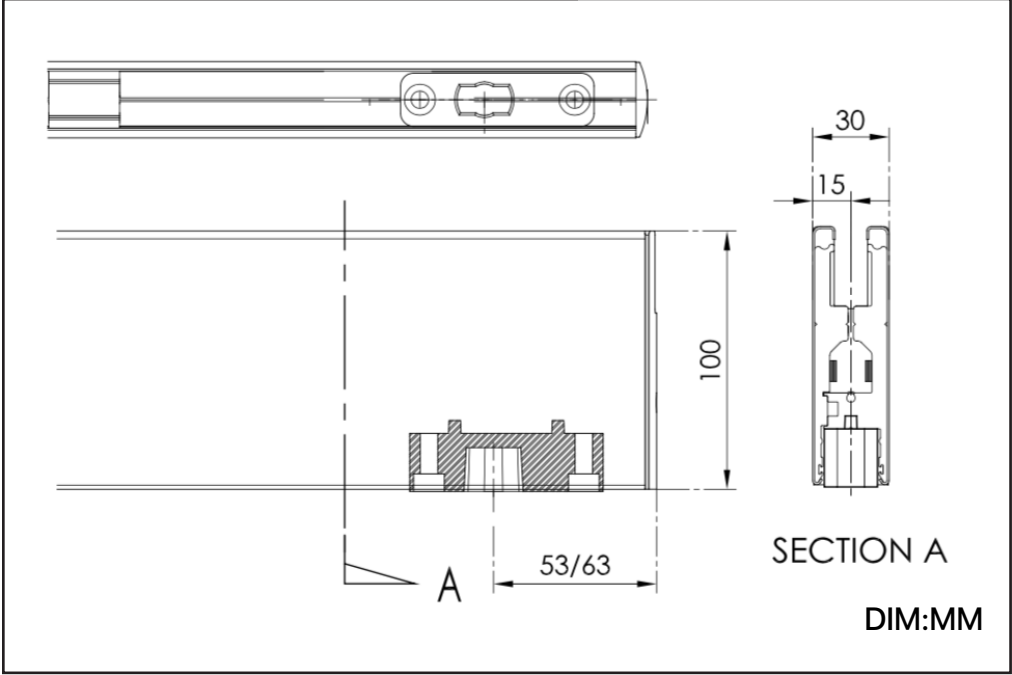
- SP-Stainless Polished
- SS-Stainless Satin

Maximum Length: 1250mm (49IN)

PR100-804.020.001 Insert:
Maximum Capacity: 80KG (176LB)
For 9916 Floor Bearing and EPCO 96 Floor Closer

04.101 BOTTOM RAIL
WITH INSERT PR100-804.020.001

PRODUCT DIMENSION



PRODUCT INFORMATION

Material:

- Aluminum Profile
- SUS 304 Stainless Steel Cover

Finish:

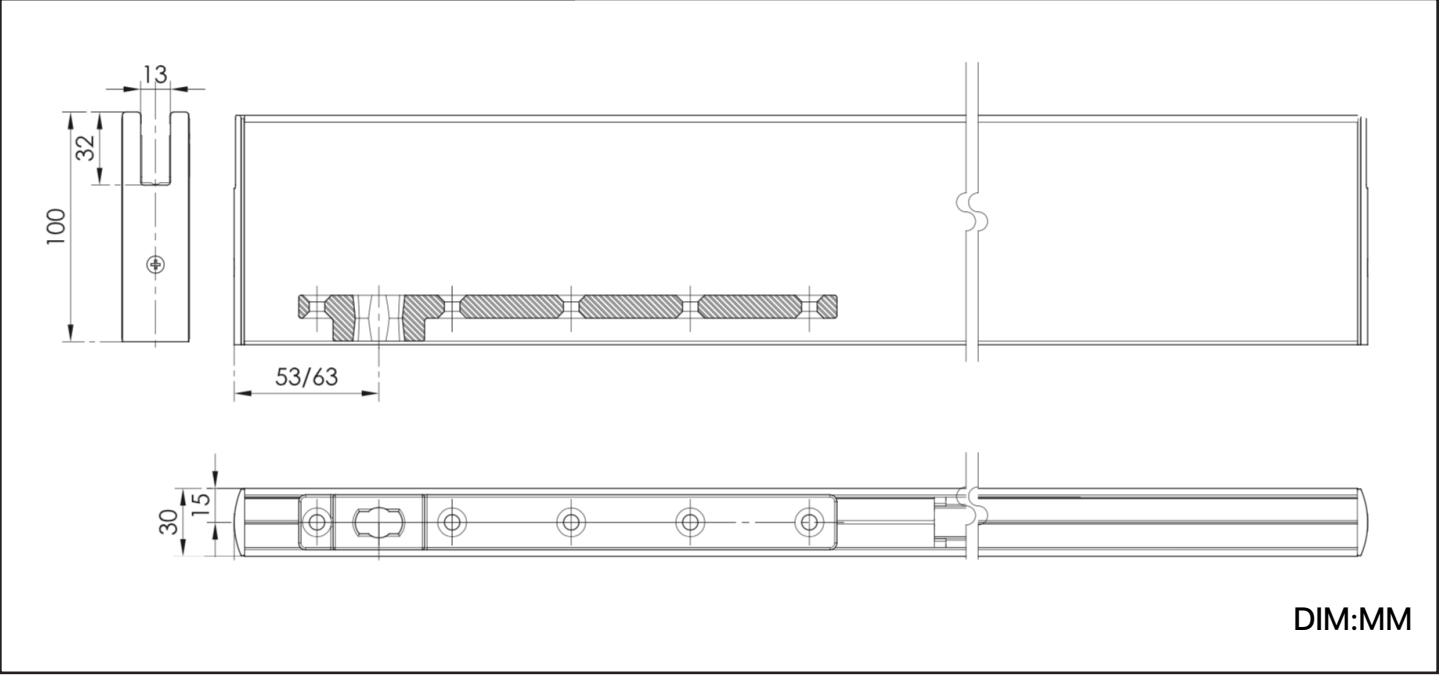
- SP-Stainless Polished
- SS-Stainless Satin

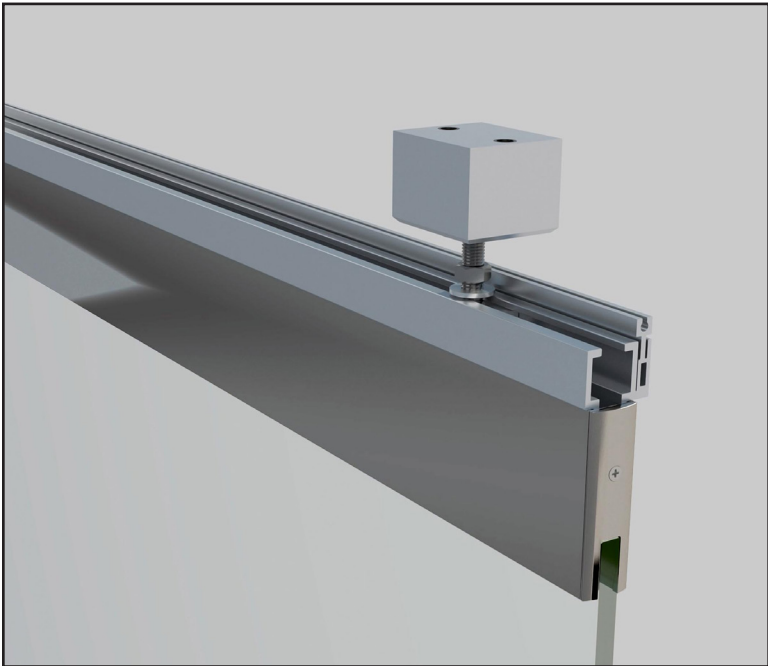
Maximum Length: 1250mm (49IN)

9968N-235 Bottom Arm:
Maximum Capacity: 150KG (330LB)
For 9916 Floor Bearing and EPCO 96 Floor Closer

04.101A BOTTOM RAIL
WITH BOTTOM ARM 9968N-235

PRODUCT DIMENSION



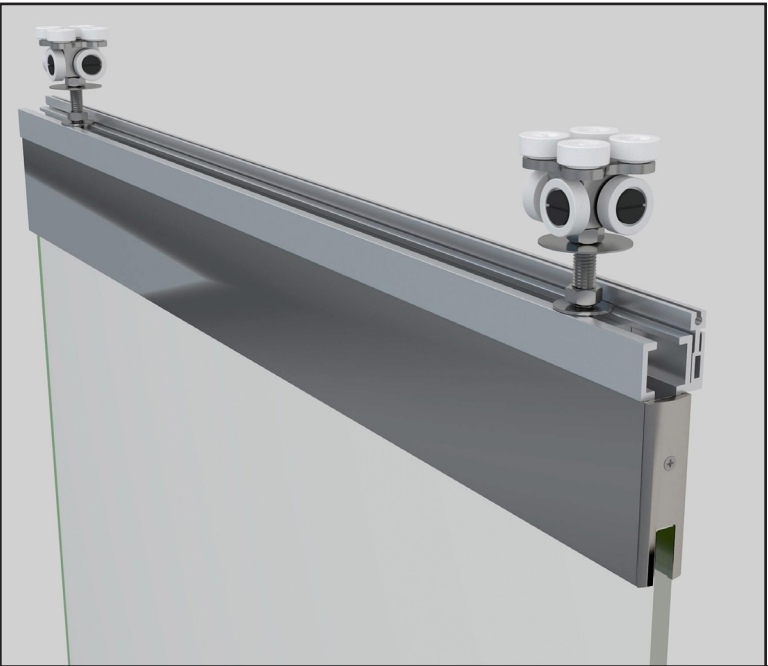
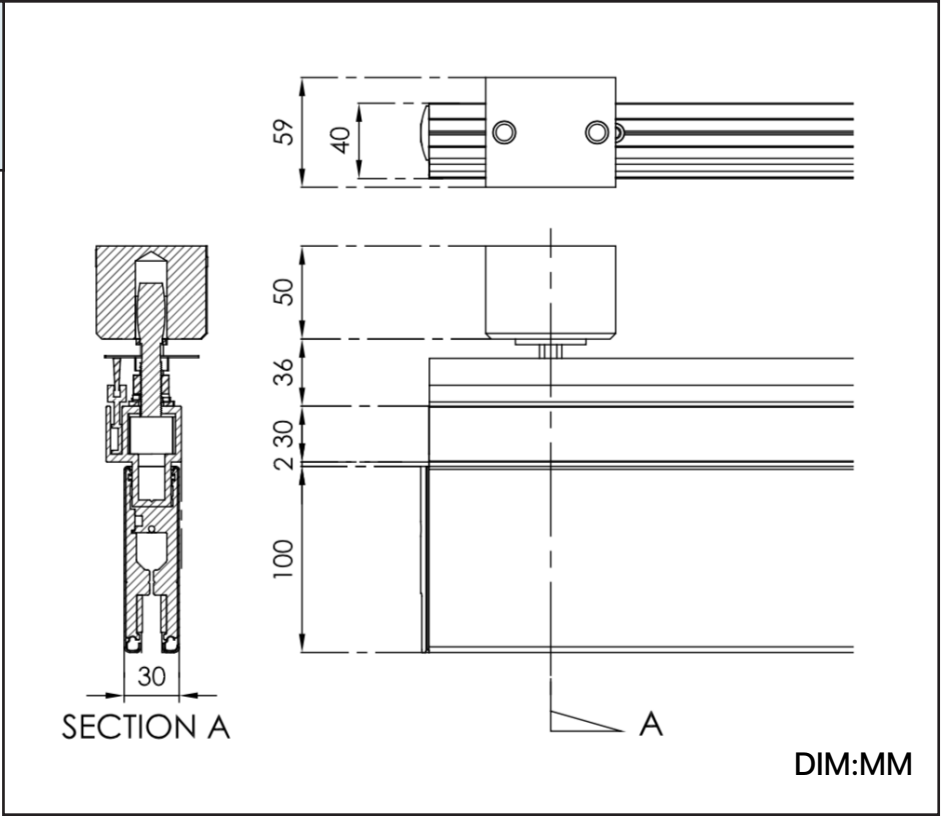


**PRODUCT
INFORMATION**

- Material:
- Aluminum Profile
 - SUS 304 Stainless Steel Cover
- Finish:
- SP-Stainless Polished
 - SS-Stainless Satin
- Maximum Length: 1250mm (49IN)

**04.103 TOP RAIL
WITH DOOR PIVOT**

**PRODUCT
DIMENSION**

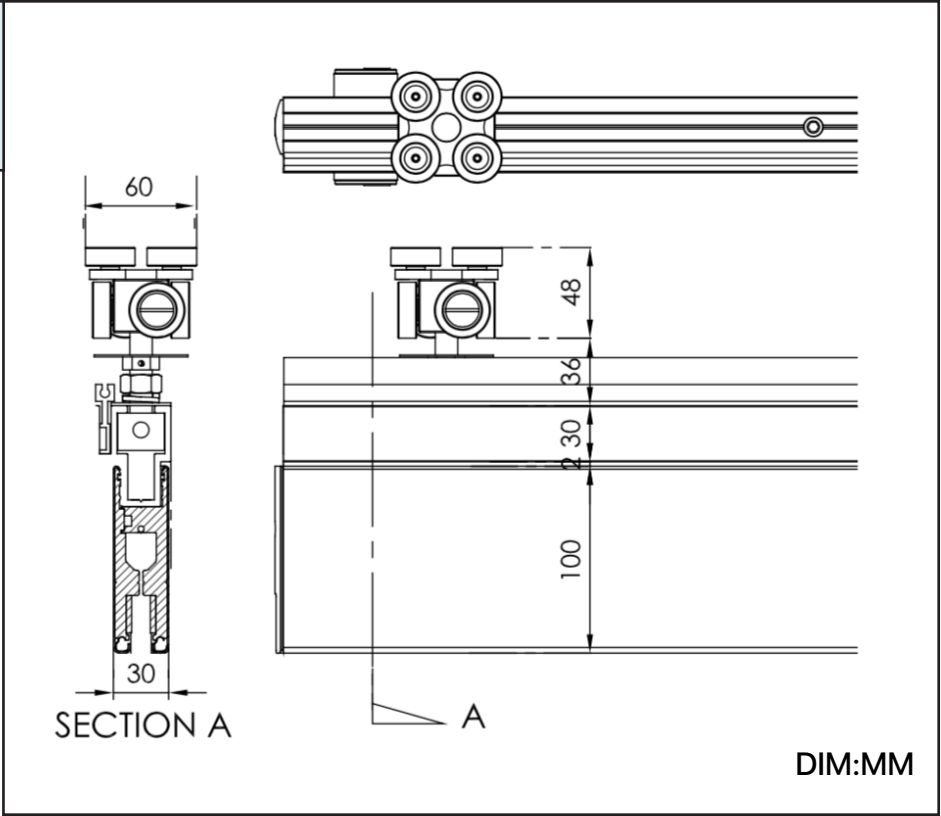


**PRODUCT
INFORMATION**

- Material:
- Aluminum Profile
 - SUS 304 Stainless Steel Cover
- Finish:
- SP-Stainless Polished
 - SS-Stainless Satin
- Maximum Length: 1250mm (49IN)

**04.104 TOP RAIL
WITH TWO ROLLERS FOR SLIDING PANEL**

**PRODUCT
DIMENSION**



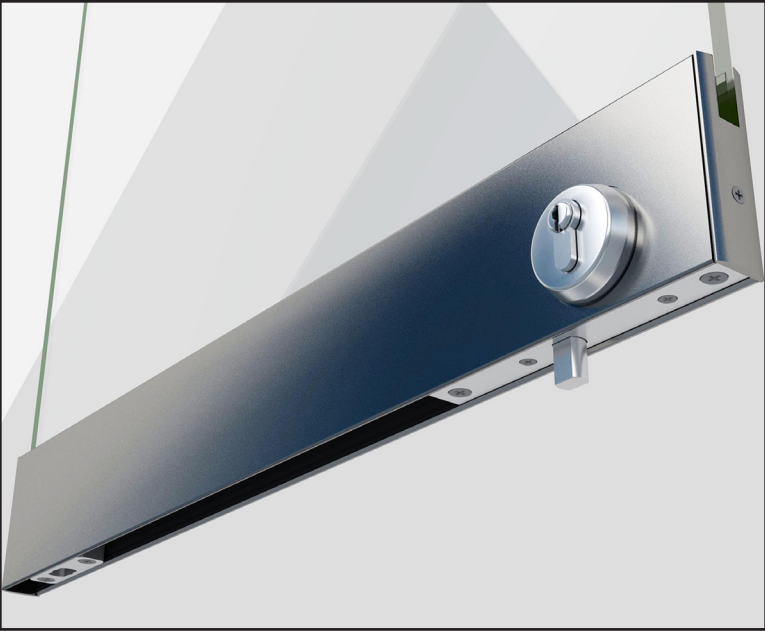
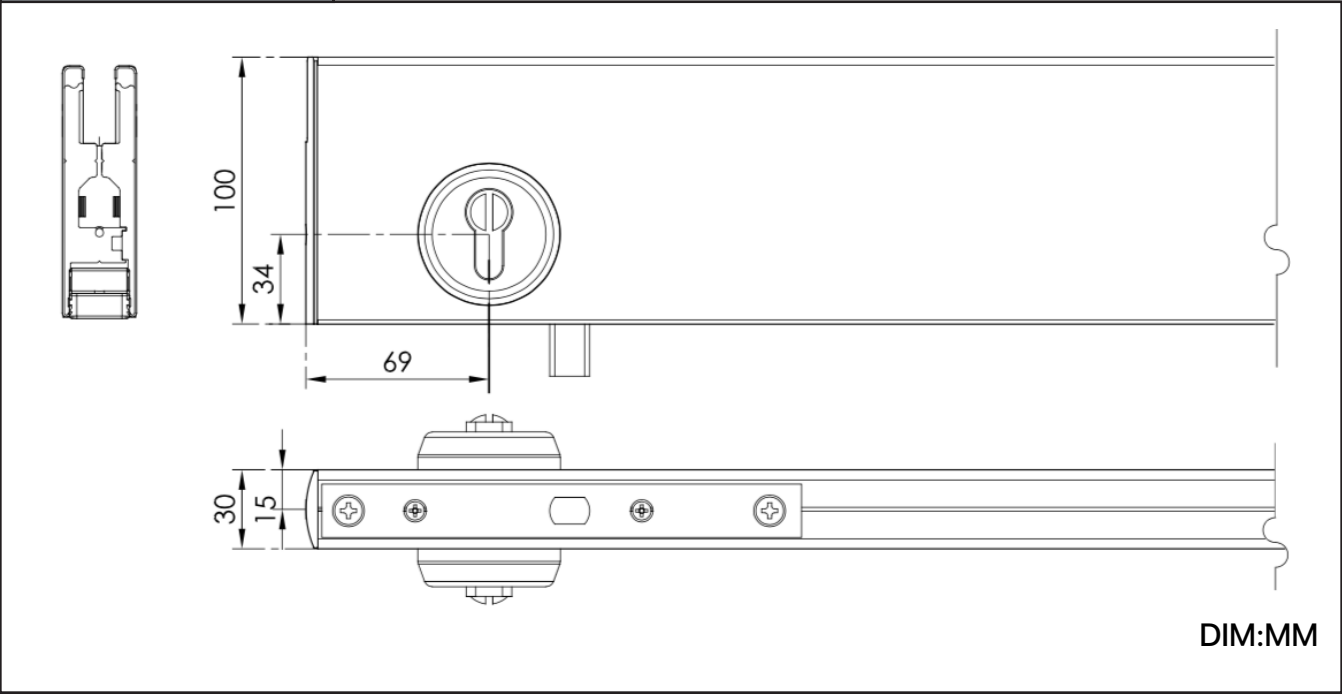


PRODUCT INFORMATION

- Material:
- Aluminum Profile
 - SUS 304 Stainless Steel Cover
- Finish:
- SP-Stainless Polished
 - SS-Stainless Satin
- Maximum Length: 1250mm (49IN)

04.110 BOTTOM RAIL
WITH UNIVERSAL TYPE LOCK

**PRODUCT
DIMENSION**



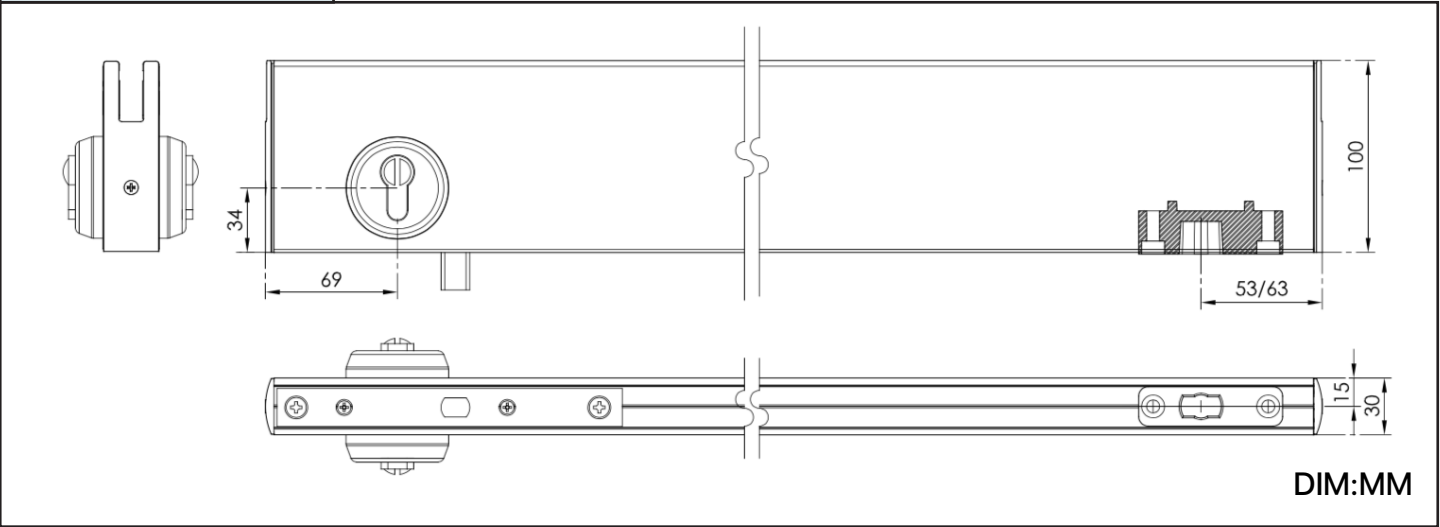
PRODUCT INFORMATION

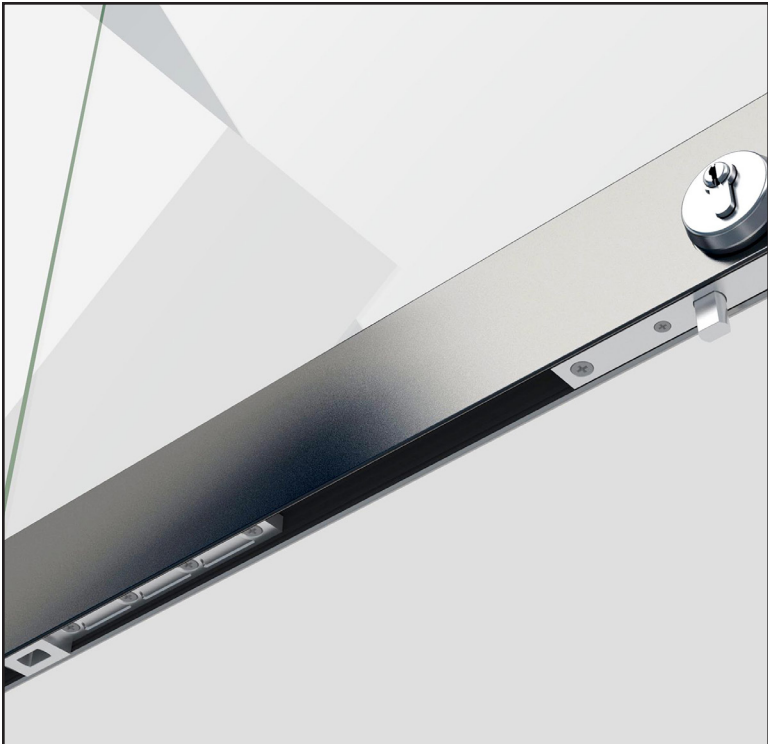
- Material:
- Aluminum Profile
 - SUS 304 Stainless Steel Cover
- Finish:
- SP-Stainless Polished
 - SS-Stainless Satin
- Maximum Length: 1250mm (49IN)

PR100-804.020.001 Insert:
Maximum Capacity: 80KG (176LB)
For 9916 Floor Bearing and EPCO 96
Floor Closer

04.111 BOTTOM RAIL
WITH INSERT 840.020.001.50 AND UNIVERSAL TYPE LOCK

**PRODUCT
DIMENSION**





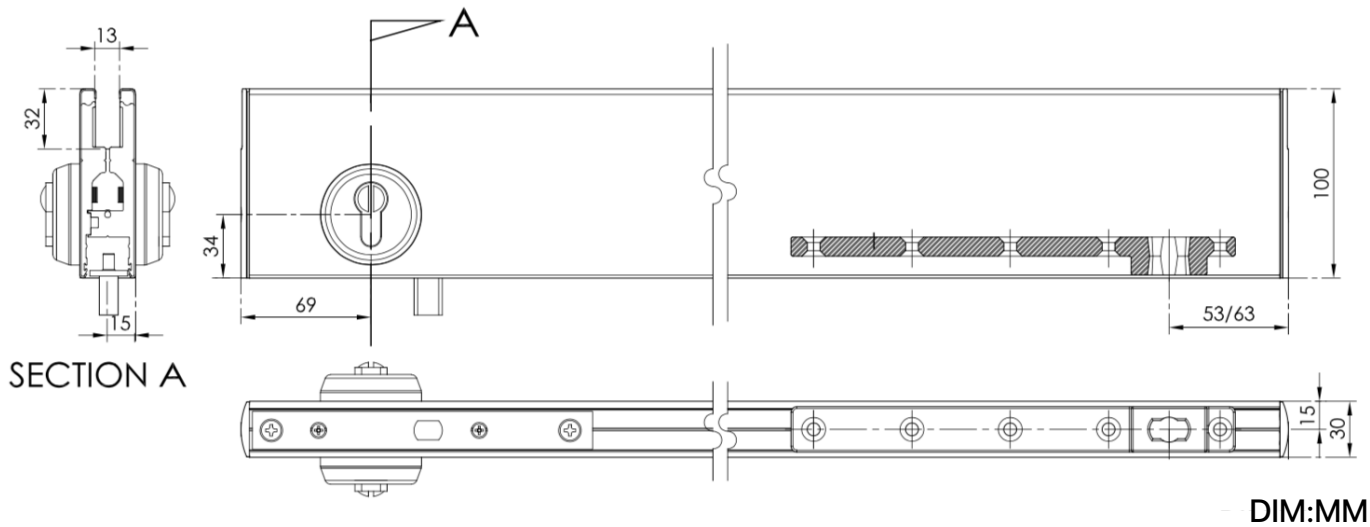
PRODUCT INFORMATION

- Material:
- Aluminum Profile
 - SUS 304 Stainless Steel Cover
- Finish:
- SP-Stainless Polished
 - SS-Stainless Satin
- Maximum Length: 1250mm (49IN)
- 9968N-235 Bottom Arm:
Maximum Capacity: 150KG (330LB)
For 9916 Floor Bearing and EPCO 96 Floor Closer

04.111A BOTTOM RAIL

WITH BOTTOM ARM 9968N-235 AND UNIVERSAL TYPE LOCK

PRODUCT DIMENSION



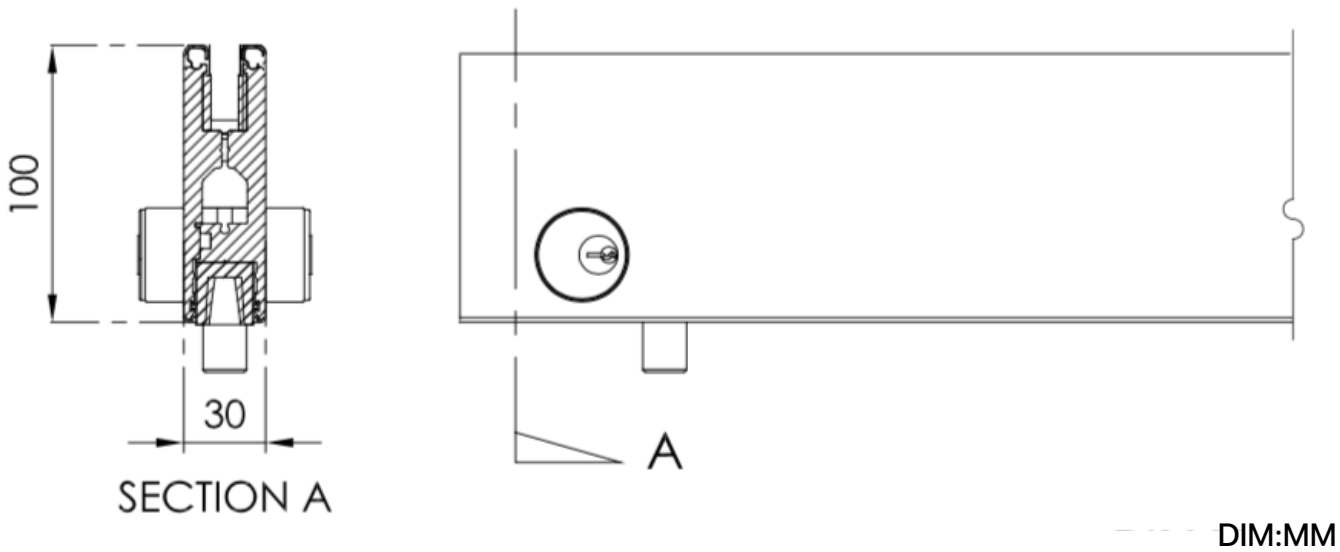
PRODUCT INFORMATION

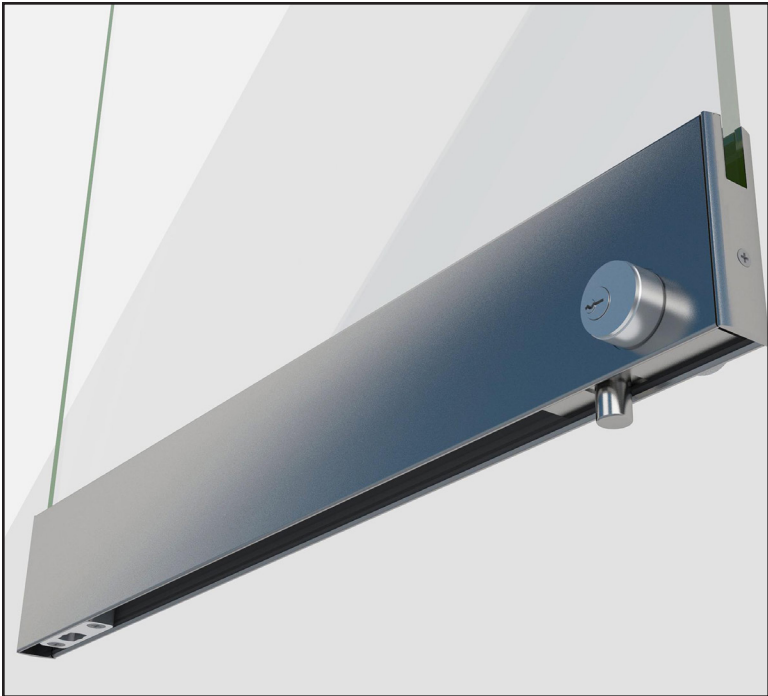
- Material:
- Aluminum Profile
 - SUS 304 Stainless Steel Cover
- Finish:
- SP-Stainless Polished
 - SS-Stainless Satin
- Maximum Length: 1250mm (49IN)

04.160 BOTTOM RAIL

WITH MORTISE LOCK (AMERICAN TYPE)

PRODUCT DIMENSION



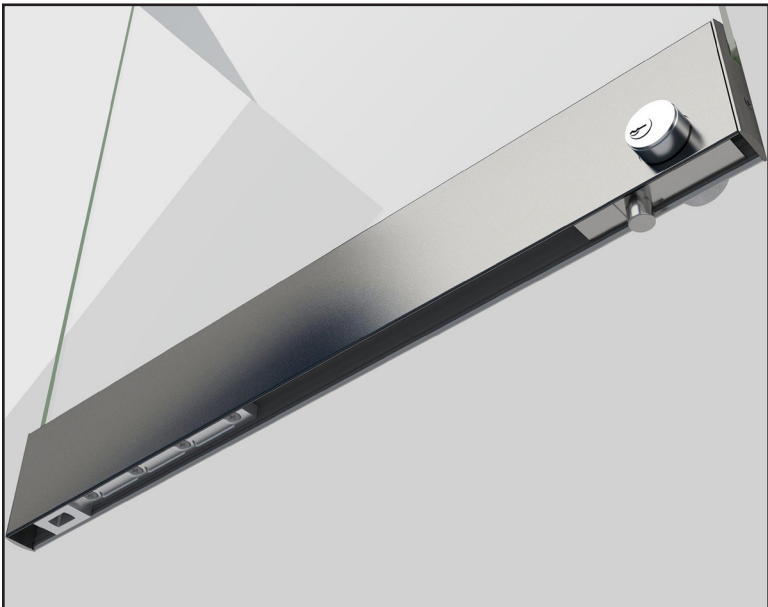
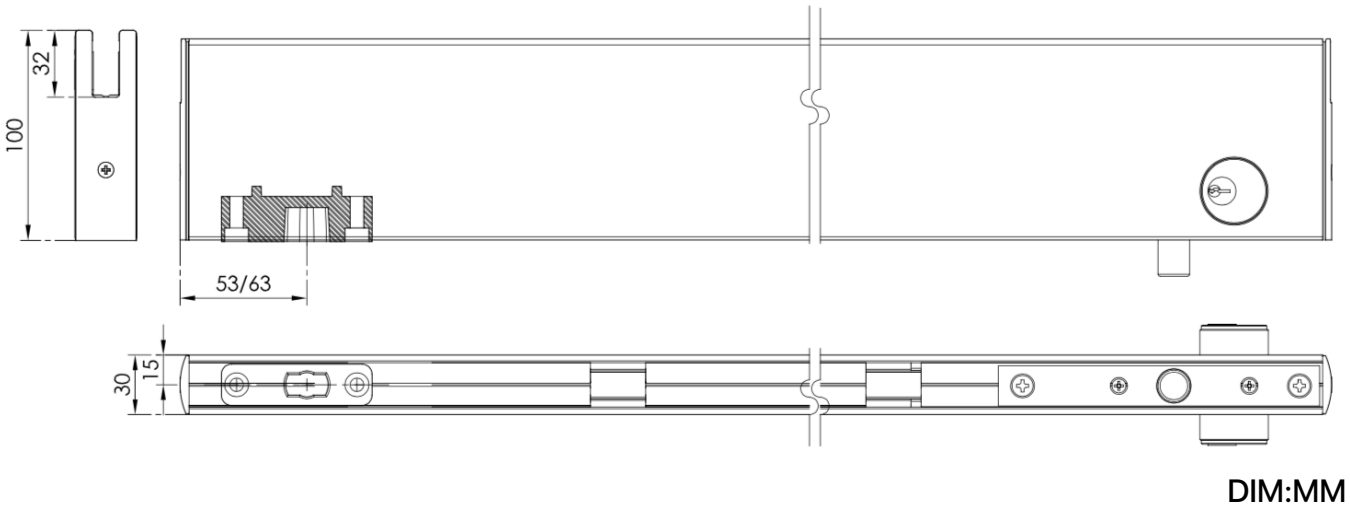


PRODUCT INFORMATION

- Material:
- Aluminum Profile
 - SUS 304 Stainless Steel Cover
- Finish:
- SP-Stainless Polished
 - SS-Stainless Satin
- Maximum Length: 1250mm (49IN)
- PR100-804.020.001 Insert:
Maximum Capacity: 80KG (176LB)
For 9916 Floor Bearing and EPCO 96 Floor Closer

04.161 BOTTOM RAIL
WITH INSERT PR100-804.020.001 AND MORTISE LOCK
(AMERICAN TYPE)

PRODUCT DIMENSION

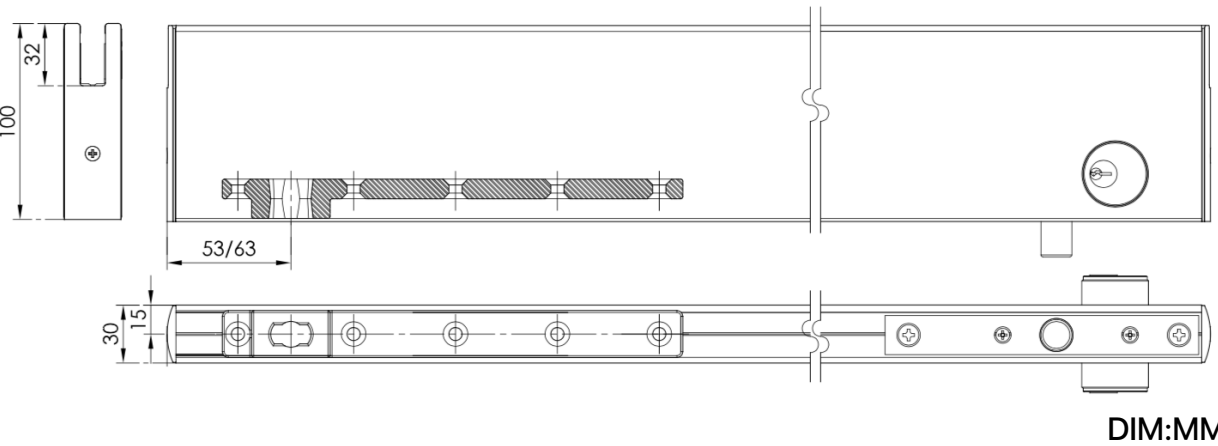


PRODUCT INFORMATION

- Material:
- Aluminum Profile
 - SUS 304 Stainless Steel Cover
- Finish:
- SP-Stainless Polished
 - SS-Stainless Satin
- Maximum Length: 1250mm (49IN)
- 9968N-235 Bottom Arm:
Maximum Capacity: 150KG (330LB)
For 9916 Floor Bearing and EPCO 96 Floor Closer

04.161A BOTTOM RAIL
WITH BOTTOM ARM 9968N-235 AND
MORTISE LOCK (AMERICAN TYPE)

PRODUCT DIMENSION



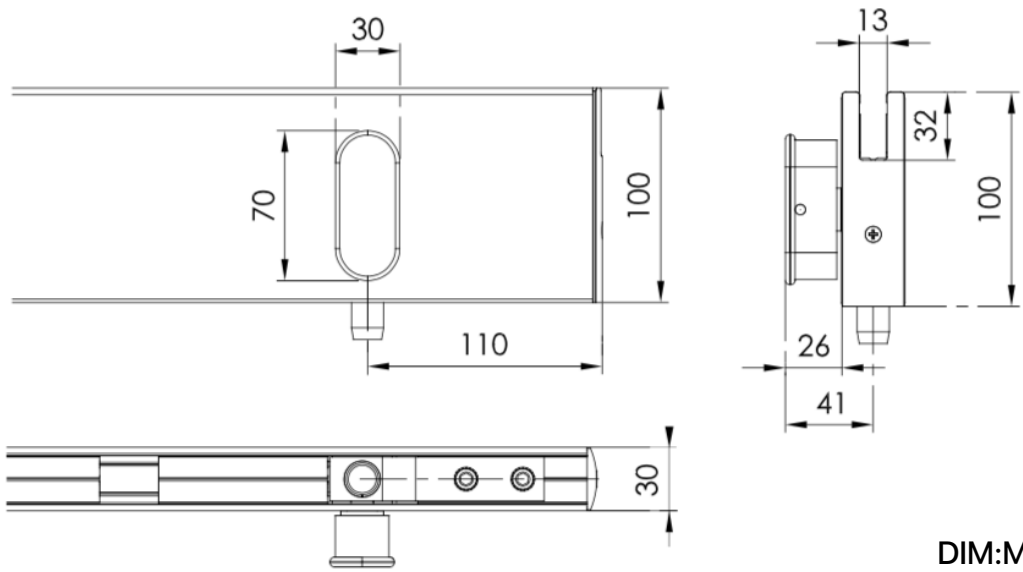


PRODUCT INFORMATION

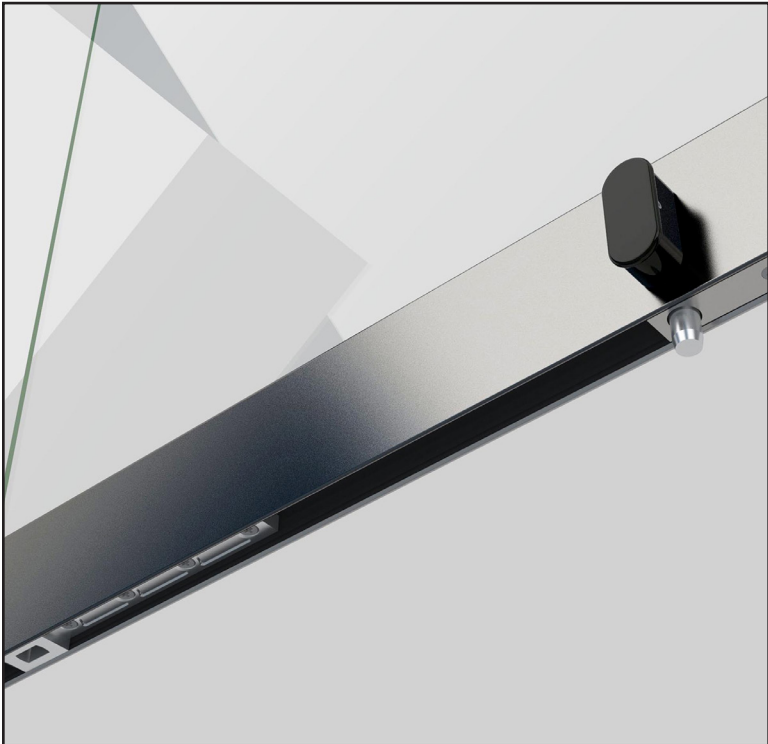
- Material:
- Aluminum Profile
 - SUS 304 Stainless Steel Cover
- Finish:
- SP-Stainless Polished
 - SS-Stainless Satin
- Maximum Length: 1250mm (49IN)

04. 200 BOTTOM RAIL
WITH LOCKING BOLT

**PRODUCT
DIMENSION**



DIM:MM



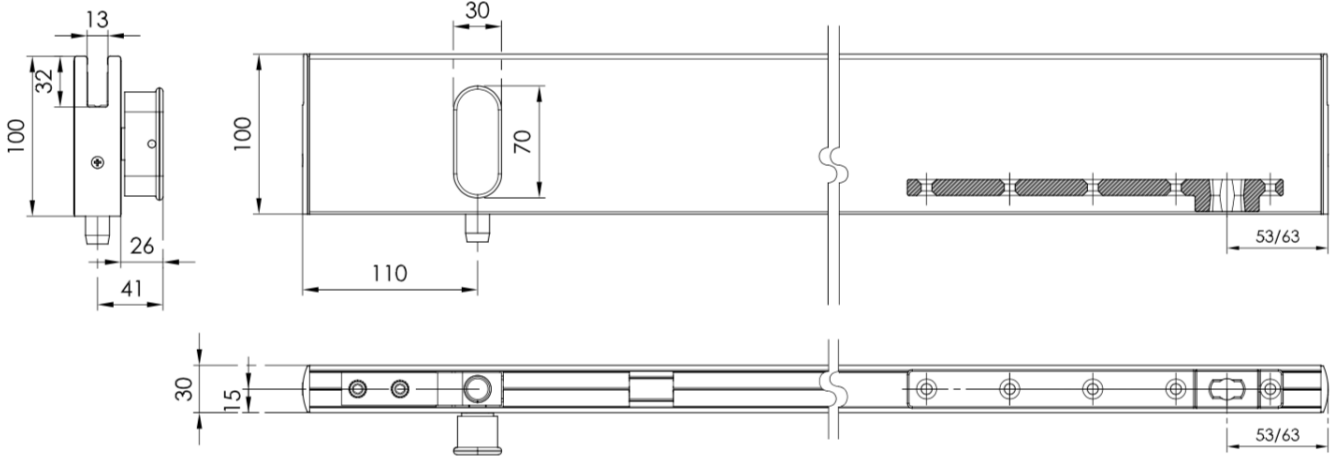
PRODUCT INFORMATION

- Material:
- Aluminum Profile
 - SUS 304 Stainless Steel Cover
- Finish:
- SP-Stainless Polished
 - SS-Stainless Satin
- Maximum Length: 1250mm (49IN)

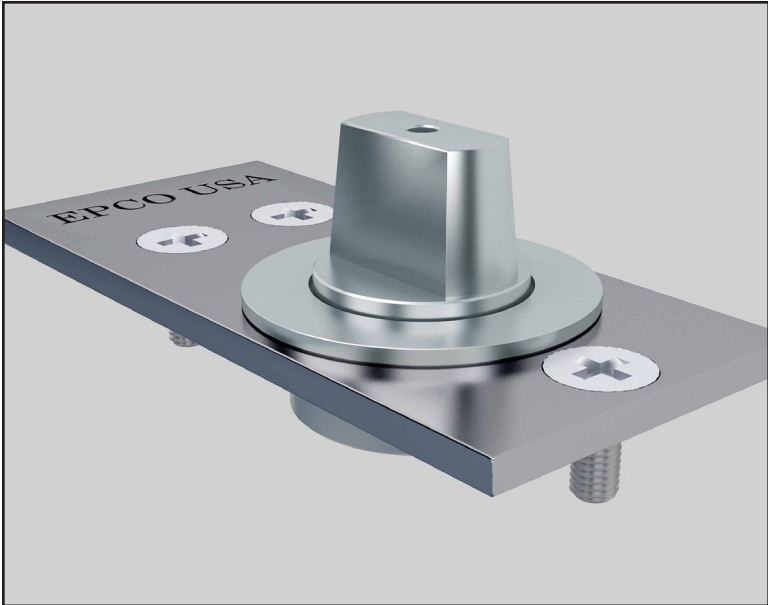
9968N-235 Bottom Arm:
Maximum Capacity: 150KG (330LB)
For 9916 Floor Bearing and EPCO 96
Floor Closer

04. 201A BOTTOM RAIL
WITH BOTTOM ARM 9968N-235 AND LOCKING BOLT

**PRODUCT
DIMENSION**



DIM:MM

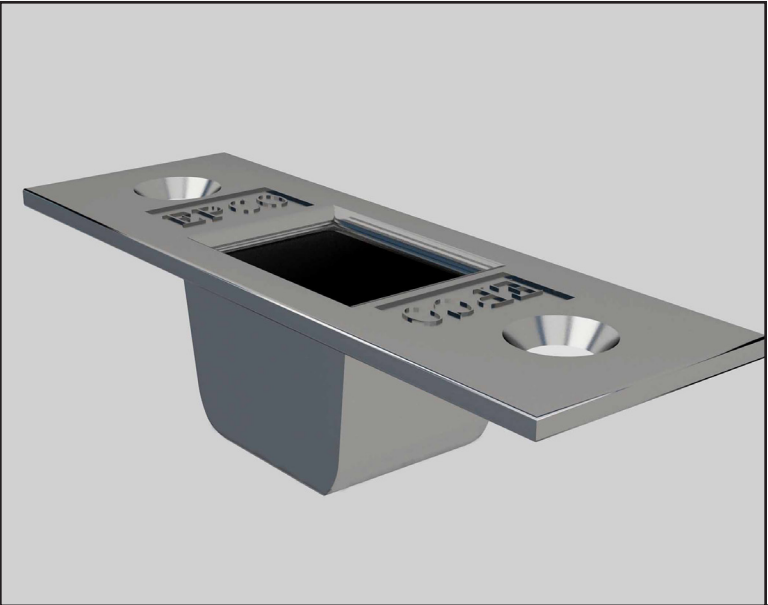
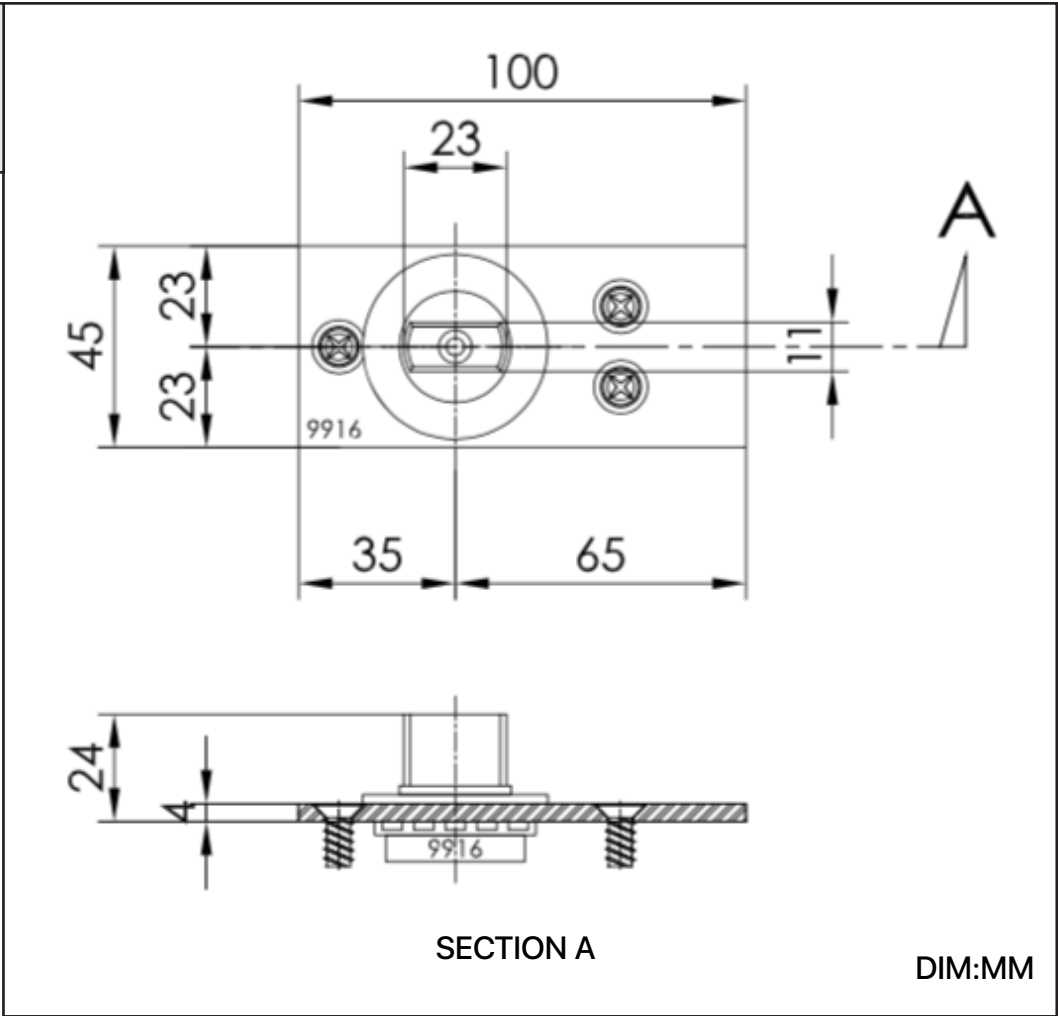


PRODUCT INFORMATION

Material: Stainless Steel
Finish: Stainless Satin
Maximum Capacity: 200KG (440LB)

9916 FLOOR BEARING

PRODUCT DIMENSION

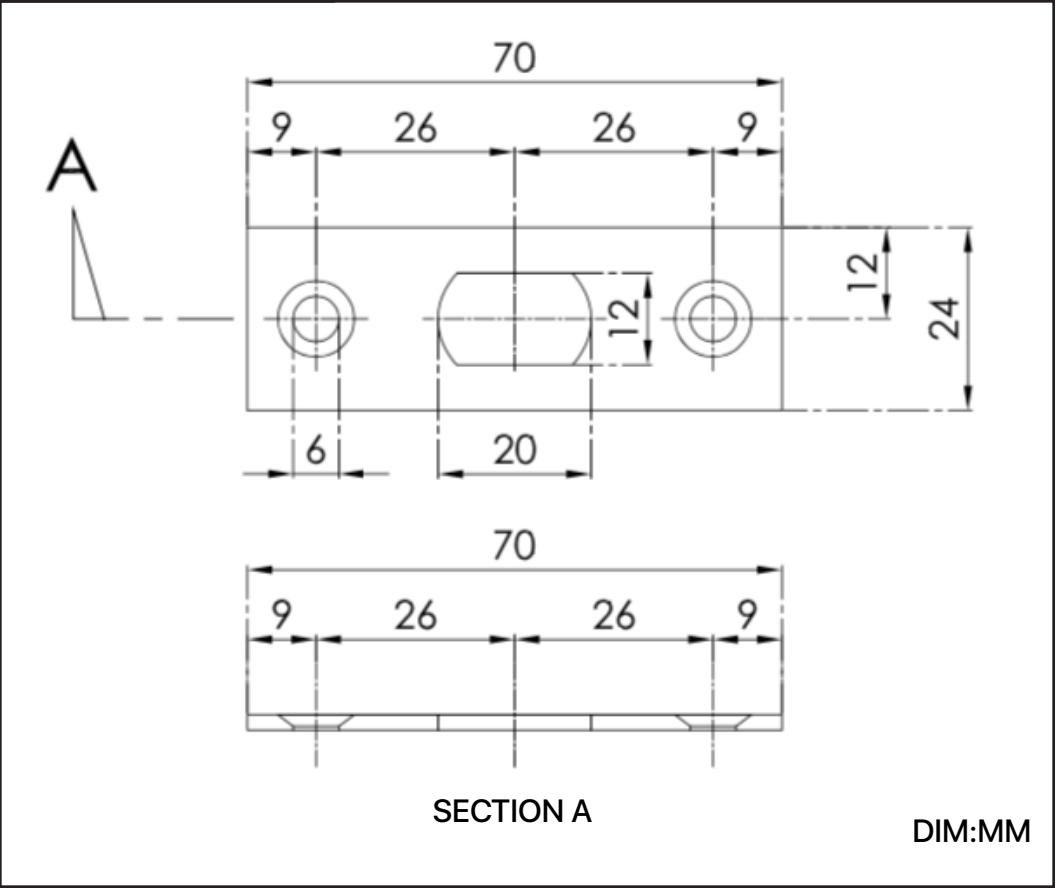


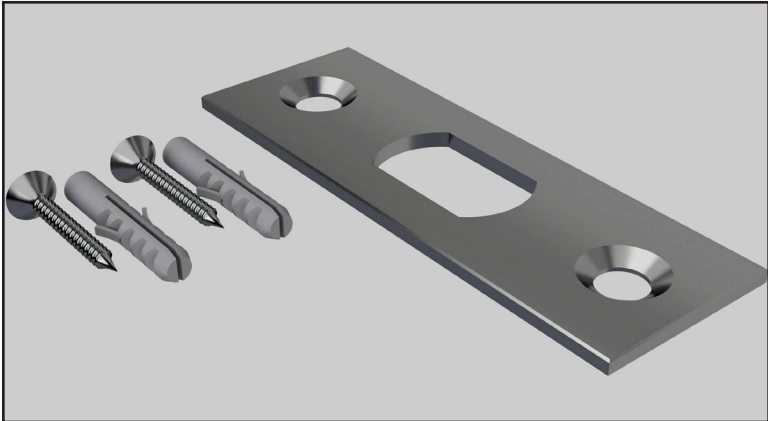
PRODUCT INFORMATION

Material: Stainless Steel
Finish: Stainless Satin
For American Type Lock

9923S LOCK KEEPER PLATE

PRODUCT DIMENSION



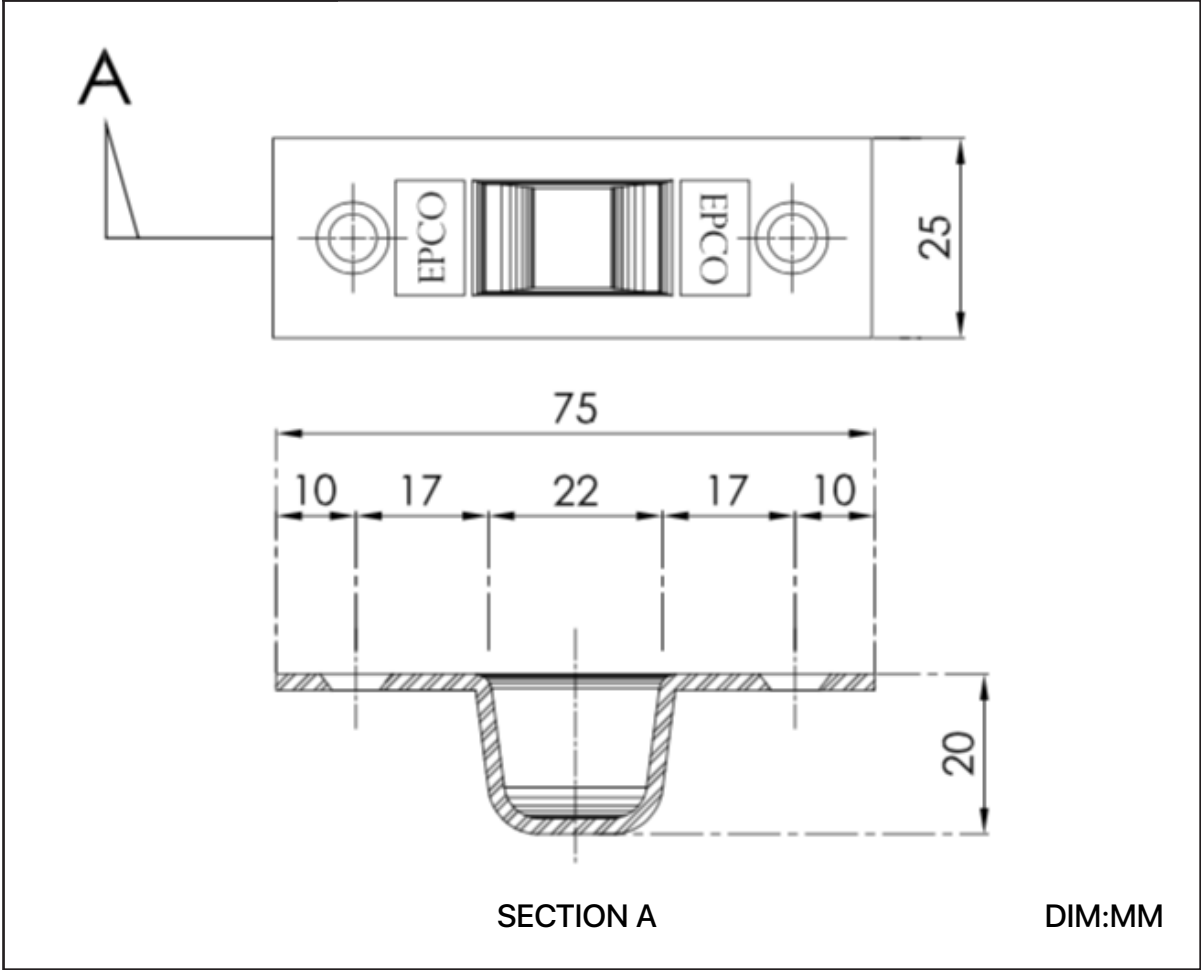


PRODUCT INFORMATION

Material: Zinc Alloy
Finish: Polished Chrome
For Universal Type Lock

9924N LOCK SOCKET

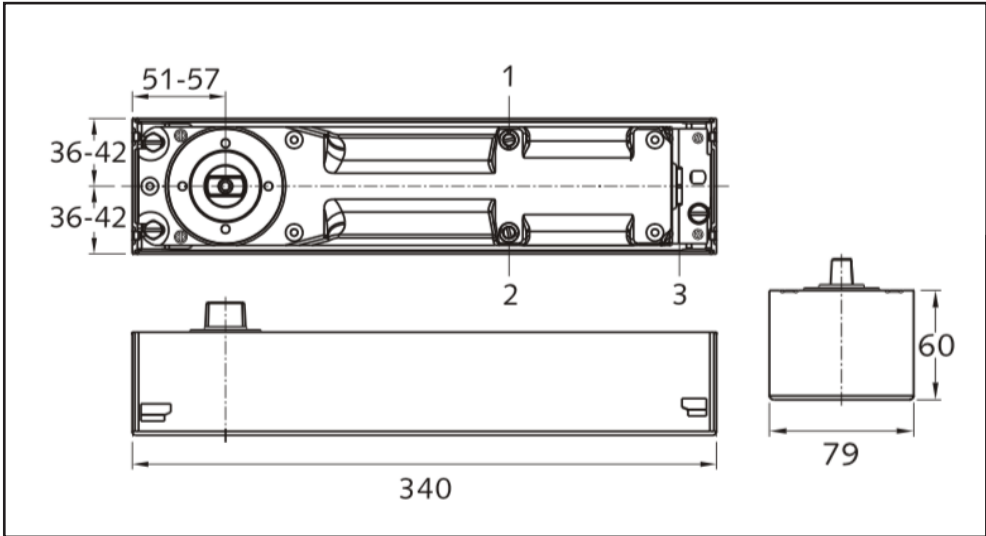
PRODUCT DIMENSION



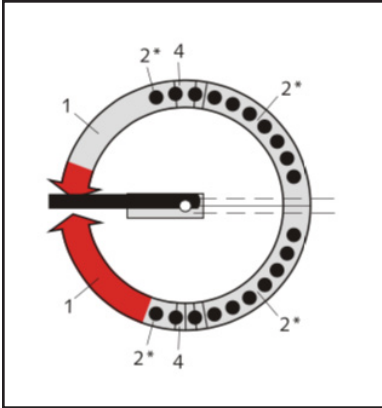
PRODUCT INFORMATION

- Compact closer body and cement case 2-3/8" deep suited for thin slab concrete construction.
- Accommodates door weight up to 300KG(660LB) and 4'-6" wide interior and 4'-0" wide exterior.
- Closer adjustment in cement case provides lateral and longitudinal adjustment of 1/4" and height adjustment of 5/32".
- A pressure relief valve protects closer from damage caused by forced closing.

EPCO 96 FLOOR CLOSER



1. Closing speed adjustment valve
2. Hold-Open / Delay Action valve
3. Hold-Open range or the end of point of the Delay Action range



1. Valve adjustment 70°~0°
 2. Valve adjustment 180°~75°
Multi-point hold open between 75° and 180°
Delay action from 180° to 75°
 3. Start of hold open or end of delay action range adjustment
Adjustable between 75° and 105°
 4. Mechanical backcheck at approximately 80°
- * Clockwise turns create a longer delay time with a slower closing speed.
Turn valve completely clockwise creates hold open and eliminates delay action.



PRODUCT REFERENCE



PRODUCT REFERENCE



PRODUCT REFERENCE



PRODUCT REFERENCE