

# NEW RELEASE BROCHURE

## UNIVERSAL RIM HOUSING DESIGN "URHD"

Distributed by:  
Colcom Sadev Canada  
101 Simona Drive Unit 4  
Bolton, Ontario  
Canada L7E 4E8  
(+1) 416 917 6150  
info@colcomsadev.ca  
www.colcomsadev.ca



We Build the Invisible



Distributed by Colcom Sadev Canada.



# UNIVERSAL RIM HOUSING DESIGN "URHD"

## ABOUT THIS REMARKABLE DESIGN

A patented, locking ladder pull that is destined to revolutionize the door handle hardware industry. With this exclusive design, a locking ladder pull can be specified and purchased without the constraints of having to identify the specific lock/core type and manufacturer early on. This design saves time, money and reduces risks.

On many occasions the project team wishes to move quickly into installation, without much clarity on which locking standard to use. The solution has arrived; "URHD", designed to receive desired RIM Cylinder Housing or IC (Interchange-able Core) RIM Housing. Endless solutions thanks to our patented internal transition plate.

## FINISH OPTIONS



**US19**  
MATTE  
BLACK FINISH



**US17A**  
TITANIUM  
BLACK



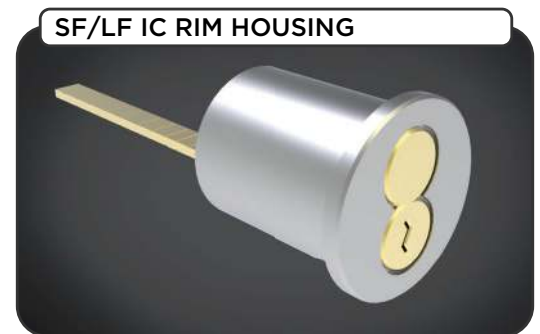
**US32**  
POLISHED  
STAINLESS STEEL



**US32D**  
BRUSHED  
STAINLESS STEEL



**US10B**  
OIL RUBBED  
BRONZE



CANADA

We Build the Invisible

Distributed by Colcom Sadev Canada.



# UNIVERSAL RIM HOUSING DESIGN "URHD"



*SYSTEM SHOWN:  
SlimWall with  
control-close Evo  
hinge and ADA  
staggered locking  
ladder pull.*



CANADA

We Build the Invisible

Distributed by Colcom Sadev Canada.



# UNIVERSAL RIM HOUSING DESIGN "URHD"

No longer does our market need to be concerned with purchasing the incorrect locking ladder pull, delaying a project and/or concerns of incurred costs directly due to specification error. Convertibility is key! Our URHD handle allows you to change to SFIC, LFIC cores or RIM cylinders in the field. This design eliminates all risks!

Aesthetically this handle is unique with its consistent tube diameter, offered to complete a clean, streamlined, and balanced design.

**SYSTEM SHOWN:**  
*Slim Wall with Auto-Patch Rail  
and ADA top locking ladder pull.*



We Build the Invisible

Distributed by Colcom Sadev Canada.

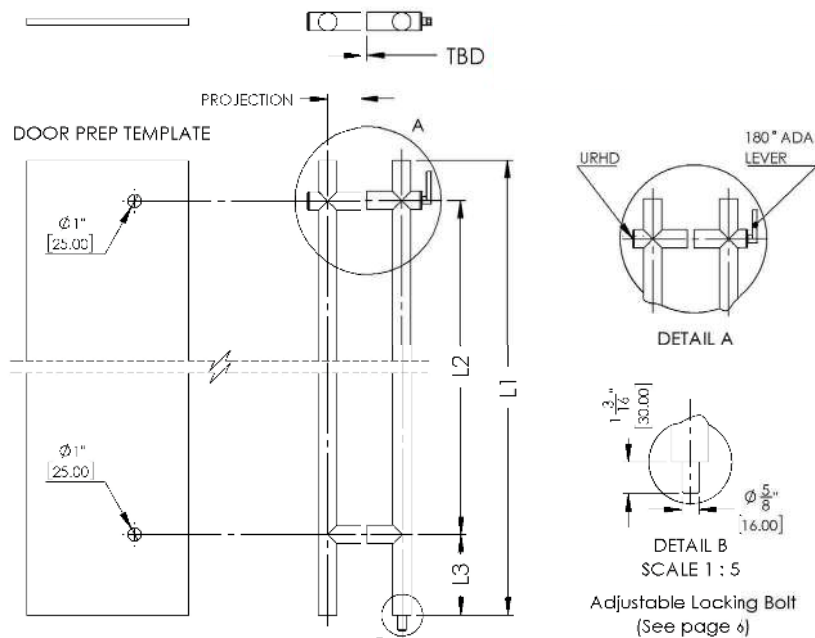




# UNIVERSAL RIM HOUSING DESIGN "URHD"

## "URHD" LOCKING LADDER PULL

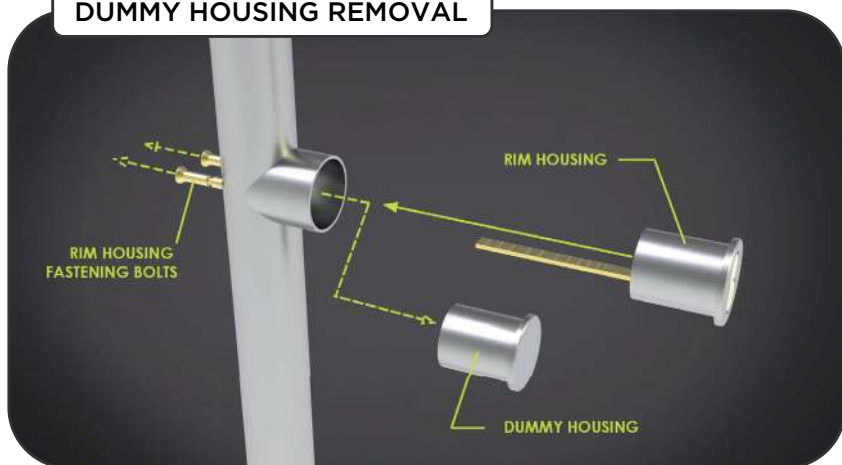
### DOOR PREP TEMPLATE



L1, L2, L3 are customizable

Conversion kits can be quoted and supplied for substrate thicknesses over 1/2" (12.7mm).

### DUMMY HOUSING REMOVAL



### TECHNICAL DATA

FINISH	TBD
TUBE OD	Ø 35MM
POST OD	Ø 35MM
LOCKING POST OD	Ø 35MM
WASHER	PLASTIC
BUSHING	PLASTIC
SUBSTRATE THICKNESS	TBD
PROJECTION	2.58" [65.50MM]
CORE FORMAT	UNIVERSAL LFIC/SFIC RIM CYL
CORE HOUSING OD	Ø 1-1/8"
ACTUATOR	180° LEVER TURN

### TOP ASSEMBLY



### BOTTOM ASSEMBLY



CANADA

We Build the Invisible

Distributed by Colcom Sadev Canada.



# UNIVERSAL RIM HOUSING DESIGN "URHD"

## ENDLESS OPTIONS

### DOUBLE-GLAZED OPTION

This handle can be installed on a double-glazed door with the help of double-glazed bushings. The bushings are custom designed to work with any air spacing requirement.

### INTERCHANGEABLE NON-LOCKING HANDLE SOLUTION (For Single and Double-Glazed Design)

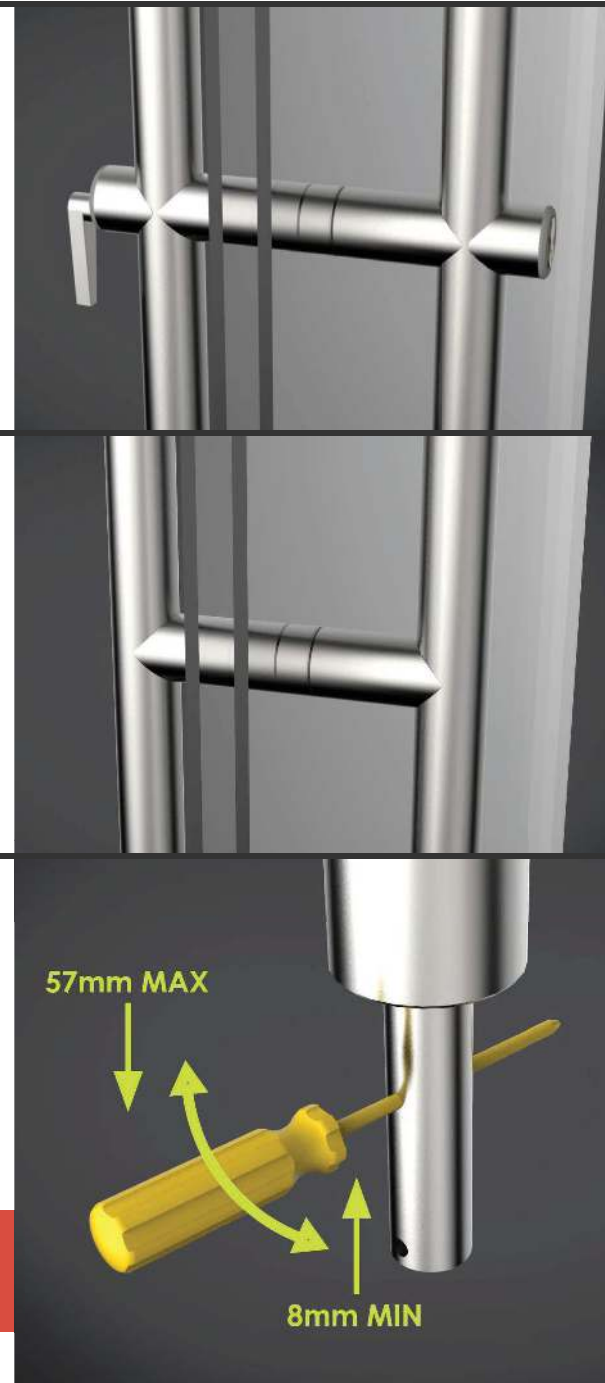
We offer this unique option to provide a uniformed look between the locking and non-locking design, with added flexibility to interchange between the two. Eliminating the need to purchase and replace glass doors. Saving additional time and money.

### ADJUSTABLE LOCKING BOLT

To address field issues with floor/header variations, adjustable bolt design allows the bolt to be adjusted to a desired length effortlessly. The bolt length can be varied from the minimum of 8mm to the maximum of 57mm. With this 49mm adjustment range, floor and header variations will no longer be an issue.



EVERY PROJECT IS FACED WITH NOT KNOWING THE PROPORTION OF LOCKING VS. NON-LOCKING LADDER PULLS.  
**HERE IS THE ULTIMATE SOLUTION.**



We Build the Invisible

Distributed by Colcom Sadev Canada.



# UNIVERSAL RIM HOUSING DESIGN "URHD"

## ADA COMPLIANCE



For the ultimate locking handle solution, ADA compliance standards are a constant priority. Our URHD handle can be designed to meet all accessibility codes throughout the United States.



CHECK OUT THIS  
COOL ANIMATION  
SHOWING HOW TO  
REPLACE THE DUMMY  
HOUSING WITH A RIM  
CYLINDER HOUSING!

[CLICK HERE!](#)



CANADA

We Build the Invisible

Distributed by Colcom Sadev Canada.