

PDU8000 Series Panic Device

ASSA ABLOY

The global leader in
door opening solutions

IMPORTANT: PLEASE READ BEFORE INSTALLING THE PANIC DEVICE

The following instructions will decrease your chances of experiencing problems during the installation and ensure a smooth, trouble-free operation of the Panic Device.

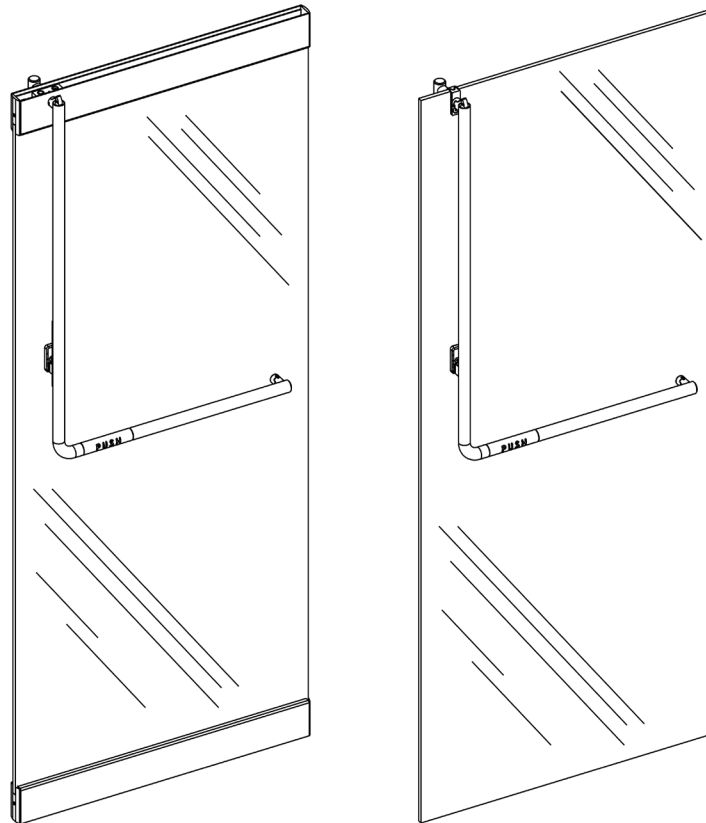


Table of Contents

1. Introduction	3
1.1 Description	3
1.2 Parts List	3
1.3 Tools and Supplies	3
1.4 Dogging Feature	4
2. Instructions for Rail Mount Doors	5
2.1 Detailed Parts List	5
2.2 Removal from Packaging	7
2.2.1 Introduction	7
2.2.2 Remove Panic Device from Shipping Board	7
2.2.3 Remove Horizontal Door Mount	8
2.2.4 Remove Horizontal Door Mount (Deco End Cap Option)	8
2.2.5 Remove Vertical Door Mount	9
2.2.6 Remove Actuator Post Assembly	9
2.3 Panic Device Installation	10
2.3.1 Install Panic Device on Rail Mount Door	10
2.3.2 Install Door Bushings	10
2.3.3 Install C Bushing	10
2.3.4 Install Mating Pull	11
2.3.5 Install Actuator Post Assembly	11
2.3.6 Install Vertical Door Mount	12
2.3.7 Install Horizontal Door Mount	13
2.3.8 Install Horizontal Door Mount (Deco End Cap Option)	13
2.3.9 Install Panic Device on Rail Mount Door	14
2.3.10 Horizontal End Threadlocker and Lube Application	15
2.3.11 Align Actuator Gauge	15
3. Instructions for All Glass Doors	17
3.1 Detailed Parts List	17

Table of Contents (Continued)

3.2	Removal from Packaging	19
3.2.1	Introduction	19
3.2.2	Remove Panic Device from Shipping Board	19
3.2.3	Remove Horizontal Door Mount	20
3.2.4	Remove Horizontal Door Mount (Deco End Cap Option)	20
3.2.5	Remove Vertical Door Mount	21
3.2.6	Remove Actuator Post Assembly	21
3.3	Panic Device Installation	22
3.3.1	Install Panic Device on All Glass Door	22
3.3.2	Install Door Bushings	22
3.3.3	Install C Bushing	22
3.3.4	Install Mating Pull	23
3.3.5	Install Actuator Post Assembly	23
3.3.6	Install Vertical Door Mount	24
3.3.7	Install Horizontal Door Mount	25
3.3.8	Install Horizontal Door Mount (Deco End Cap Option)	25
3.3.9	Install Panic Device on All Glass Door	26
3.3.10	Horizontal End Threadlocker and Lube Application	27
3.3.11	Align Actuator Gauge	27
4.	Strike Installation	28
4.1	Header Preparation for Single and Double Manual Strikes with Adjustable Door Stops	28
4.2	Header Preparation for Single and Double Electrical Strikes with Adjustable Door Stops	30
5.	Latch / Adjustable Door Stops Adjustment	32
5.1	Installation and Adjustment of Door Stop-Strike	32
5.2	Latch Adjustment for Proper Engaging with the Strike	34
6.	Cleaning and Maintenance	36
6.1	General Maintenance Instructions	36
6.2	Finish Cleaning Instructions	36
6.3	Mechanical Maintenance	37

ASSA ABLOY

The global leader in
door opening solutions

1. Introduction

1.1 Description

- The PDU8000 Series Panic Device offers superior functionality for egress and security needs.
- The Panic Device has an aesthetically pleasing design that is available in two configurations: one for Rail Mount Doors and one for All Glass Doors.
- Depending on configuration, the system could include a Dogging Feature. Refer to Dogging Feature (Introduction, page 4).
- Please read the Installation Instructions in this manual carefully before installing the Panic Device.
- If you have questions, please contact us at (800)458-2424.

1.2 Parts List

- Each configuration of the Panic Device has its own unique parts list . Please refer to the Detailed Parts List section for the applicable parts lists shown below.
 - Detailed Parts List - Rail Mount Doors: Refer to Section 2.1.
 - Detailed Parts List - All Glass Doors: Refer to Section 3.1.

1.3 Tools and Supplies

- The tools and supplies listed below are necessary to complete the installation of the Panic Device.

Tools

- Allen wrenches: 5/64", 5/32", 1/8", 3/16", 1/4"
- Latch and Actuator Gauge
- Spanner Wrench
- Wrench: 7/16"

Supplies included in kit

- Threadlocker
- Synthetic Multi-Purpose Grease
- Latch and Actuator Gauge
- Extra Door Bushings

Supplies Needed (not included in kit)

- Soft Cloth

ASSA ABLOY

1.4 Dogging Feature

- The Dogging Feature is located on the bottom of the Panic Device Assembly vertical tube, directly under the Actuator Post Assembly.
- Engage the Horizontal Crash Bar and slide the Dog Button to the up position.
- The Panic Device Assembly is dogged when the Dog Button is in the up position. Refer to Figure 1-1.
- The Panic Device Assembly is un-dogged when the Dog Button is in the down position. Refer to Figure 1-2.

Figure 1-1
Dogged Position

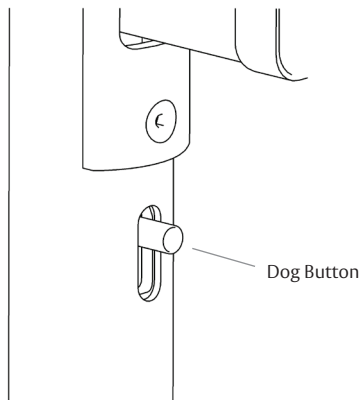
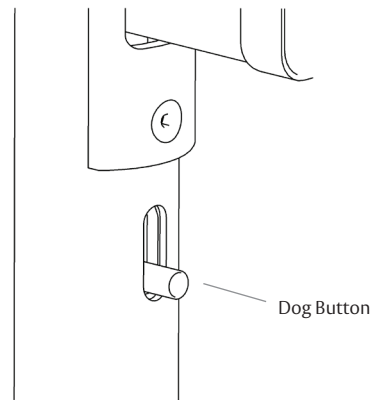


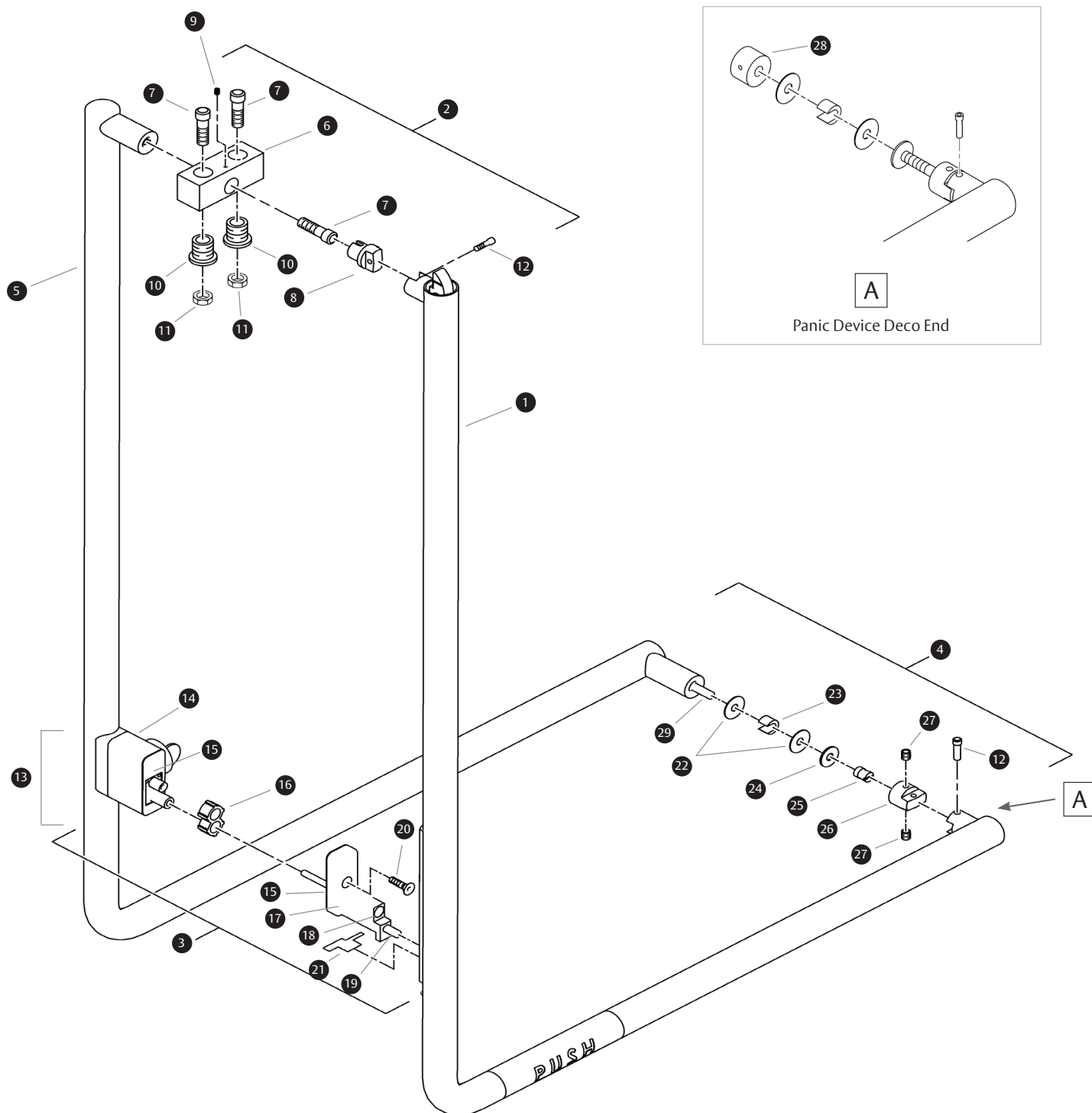
Figure 1-2
Un-dogged Position



ASSA ABLOY

2. Instructions for Rail Mount Doors

2.1 Detailed Parts List



ASSA ABLOY

Description	Quantity
❶ Panic Device Assembly	1
❷ Vertical Door Mount Assembly	1
❸ Actuator Post-Cylinder Housing Assembly	1
❹ Horizontal Door Mount Assembly	1
❺ Mating Pull Assembly	1
❻ Adapter Block	1
❼ Socket Cap Screw (5/16"-18)	3
❽ Interior Pivot Bracket Post	1
❾ Set Screw (8-32)	1
❿ Adapter Block Post	2
⓫ Nylon Lock Nut (Not Reused)	2
⓬ Set Screw Pin (1/4"-20)	2
⓭ Mating Pull-Cylinder Housing Assembly	1
⓮ Cylinder Housing	1
⓯ Door Gasket	2

Description	Quantity
❶❷ Door Bushing	4
❶❸ Actuator Post Assembly	1
❶❹ Push Rod	1
❶❺ Spring Tube-Spring	1
❶❻ Flat Head Socket Cap Screw (1/4"-20)	1
❶❼ Latch and Actuator Gauge	1
❶❷❷ Plastic Washer	2
❶❷❸ C Bushing	1
❶❷❹ Metal Washer	1
❶❷❺ Conehead Union (5/16"-18)	1
❶❷❻ Interior Horizontal Post	1
❶❷❼ Set Screw (1/4"-20)	2
❶❷❸❸ Deco End Cap	1
❶❷❸❹ Stud (5/16"-18)	1

ASSA ABLOY

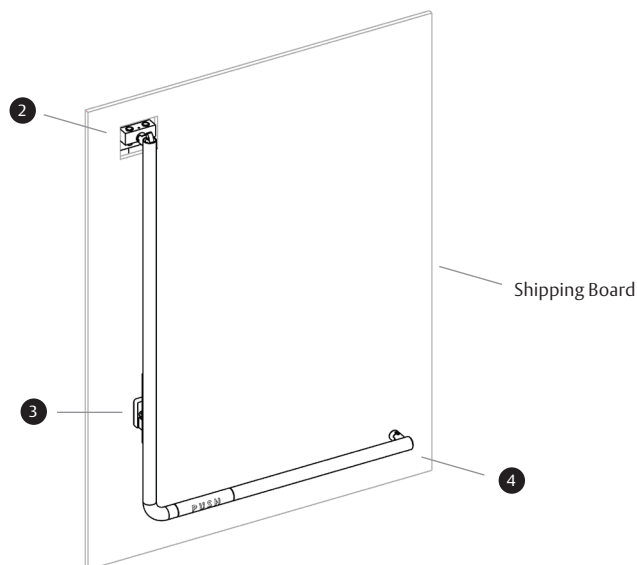
The global leader in
door opening solutions

2.2 Removal from Packaging - Rail Mount Doors

2.2.1 Introduction

- The Panic Device Assembly comes mounted on a Shipping Board inside a shipping crate.
- Before removing from the Shipping Board, make sure that the device is in the un-dogged position. Refer to Introduction, page 4.
- Most of the hardware will be reused. Do not discard any parts at this time.
- Remove the Shipping Board from the shipping crate.
- Make sure that the Vertical Door Mount Assembly **2**, Actuator Post-Cylinder Housing Assembly **3**, and Horizontal Door Mount Assembly **4** are still attached to the Shipping Board when removing from the crate.

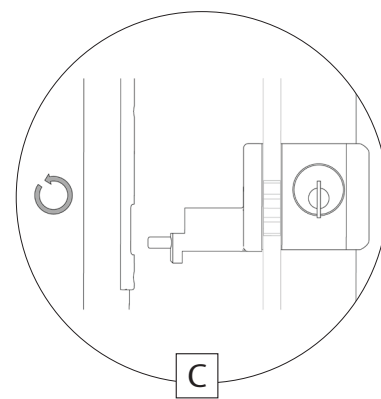
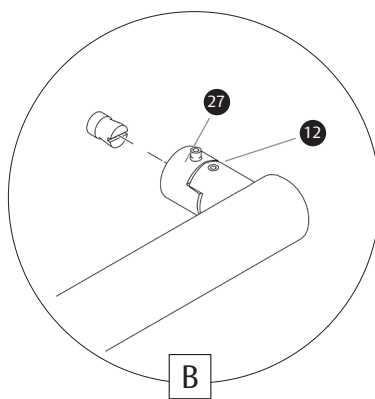
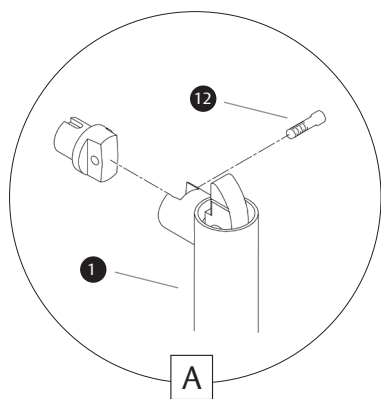
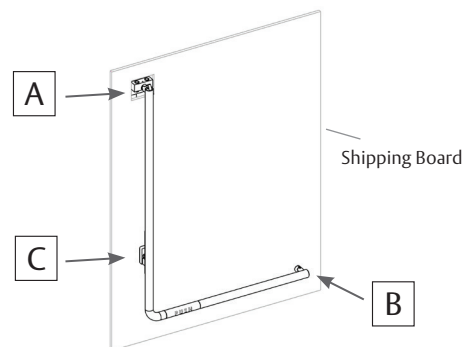
- 2** Vertical Door Mount Assembly
- 3** Actuator Post-Cylinder Housing Assembly
- 4** Horizontal Door Mount Assembly



2.2.2 Remove Panic Device from Shipping Board

- Remove the Set Screw Pin **12** from the Panic Device Assembly **1**.
- Loosen the two Set Screws (1/4"-20) **27** on the free end. The Set Screws (1/4"-20) **27** are not removed in this step.
- Pull the Panic Device **1** away from the Shipping Board by tilting the device.

- 12** Set Screw Pin
- 1** Panic Device Assembly
- 27** Set Screws (1/4"-20)

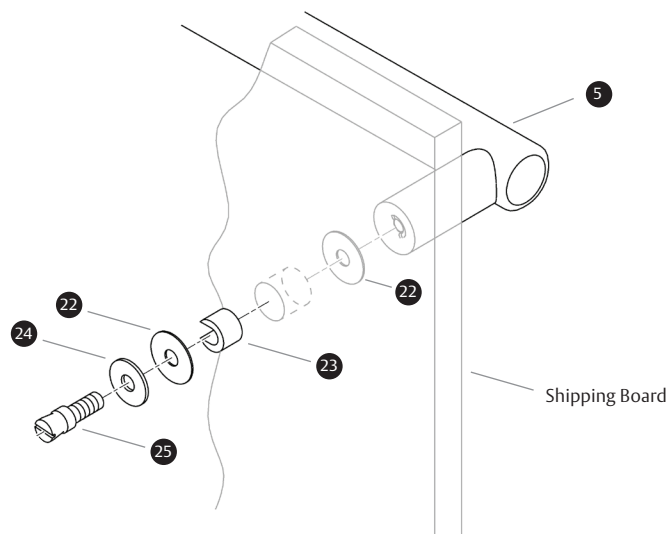


ASSA ABLOY

2.2.3 Remove Horizontal Door Mount

- Unscrew and remove the Conehead Union (5/16"-18) 25.
- Remove the two Plastic Washers 22, Metal Washer 24, and C Bushing 23.

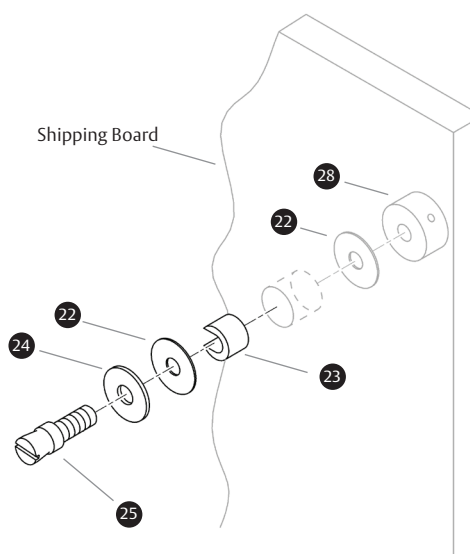
- 5 Mating Pull Assembly
- 25 Conehead Union (5/16"-18)
- 22 Plastic Washer (x2)
- 24 Metal Washer
- 23 C Bushing



2.2.4 Remove Horizontal Door Mount (Deco End Cap Option)

- Unscrew and remove the Conehead Union (5/16"-18) 25.
- Remove the Deco End Cap 28.
- Remove the two Plastic Washers 22, Metal Washer 24, and C Bushing 23.

- 28 Deco End Cap
- 25 Conehead Union (5/16"-18)
- 22 Plastic Washer (x2)
- 24 Metal Washer
- 23 C Bushing



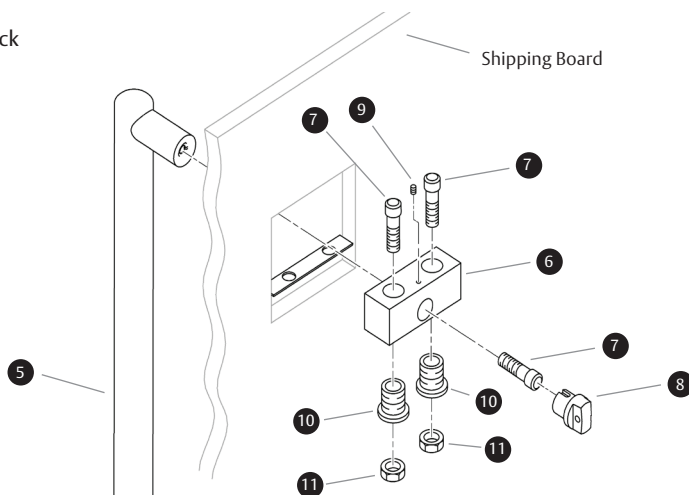
ASSA ABLOY

The global leader in
door opening solutions

2.2.5 Remove Vertical Door Mount

- Unscrew the Set Screw (8-32) ⑨ enough to remove the Interior Pivot Bracket Post ⑧.
- Remove the Interior Pivot Bracket Post ⑧.
- Remove the Socket Cap Screw (5/16"-18) ⑦ from the Mating Pull Assembly ⑤.
- Remove the two Socket Cap Screws (5/16"-18) ⑦ and the Nylon Lock Nuts ⑪ from the Adapter Block ⑥.

- ⑨ Set Screw (8-32)
- ⑧ Interior Pivot Bracket Post
- ⑦ Socket Cap Screw (5/16"-18) (x3)
- ⑤ Mating Pull Assembly
- ⑪ Nylon Lock Nuts (Not Reused)
- ⑥ Adapter Block

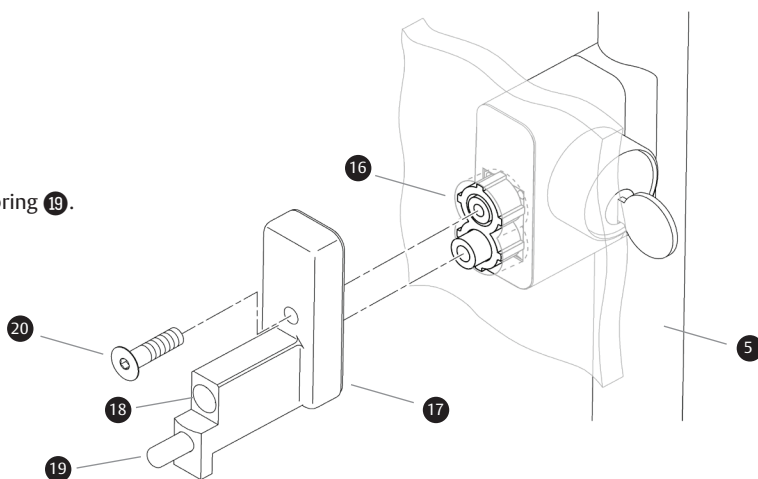


2.2.6 Remove Actuator Post Assembly

- Remove the Flat Head Socket Cap Screw (1/4"-20) ⑳.
- Remove the Actuator Post Assembly ⑰, Push Rod ⑱, and Spring Tube-Spring ⑲ from the Shipping Board.
- Hold the Mating Pull ⑤ in place while removing the Actuator Post Assembly ⑰.
- Remove the Mating Pull ⑤ from the Shipping Board.
- Remove the Door Bushing ⑯.

CAUTION: Make sure to contain the Spring inside the Spring Tube-Spring ⑲.

- ⑳ Flat Head Socket Cap Screw (1/4"-20)
- ⑰ Actuator Post Assembly
- ⑱ Push Rod
- ⑲ Spring Tube-Spring
- ⑤ Mating Pull Assembly
- ⑯ Door Bushing



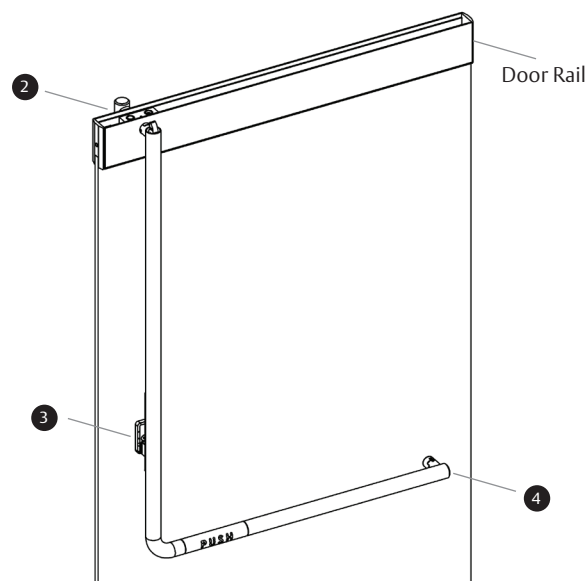
ASSA ABLOY

2.3 Panic Device Installation - Rail Mount Doors

2.3.1 Install Panic Device on Rail Mount Door

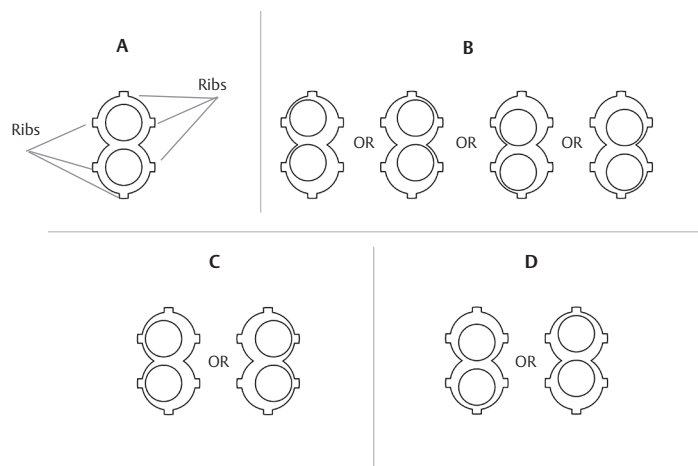
- Lay the glass flat with the exterior side facing down on a pair of saw horses.
- Make sure that the Door Rails are installed per manufacturer's specifications.

- ② Vertical Door Mount Assembly
- ③ Actuator Post-Cylinder Housing Assembly
- ④ Horizontal Door Mount Assembly



2.3.2 Install Door Bushings

- There are four Door Bushings ⑩ in each package.
- Below are the different configurations of the Door Bushings ⑩.
- Choose the Door Bushings ⑩ configuration that best fits your Panic Device Assembly Installation and centers the actuator post in the tube opening.
- Each Door Bushing ⑩ contains 6 ribs.
- Removal of the rib material may be necessary to ensure a proper fit.



2.3.3 Install C Bushing

- You can adjust the C Bushing ②③ by rotating it 360 degrees.
- Make the necessary adjustment to get equal spacing between the sides of the Actuator Post Assembly ①⑦ and the tube opening.
- If there is friction against the right side, adjust the opening of the C Bushing ②③ to the right. Refer to Figure B1.
- If there is friction against the left side, adjust the opening of the C Bushing ②③ to the left. Refer to Figure B2.

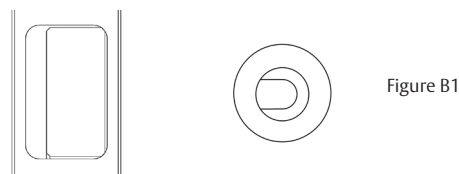


Figure B1

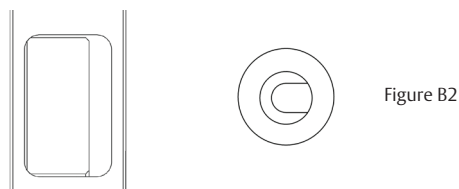


Figure B2

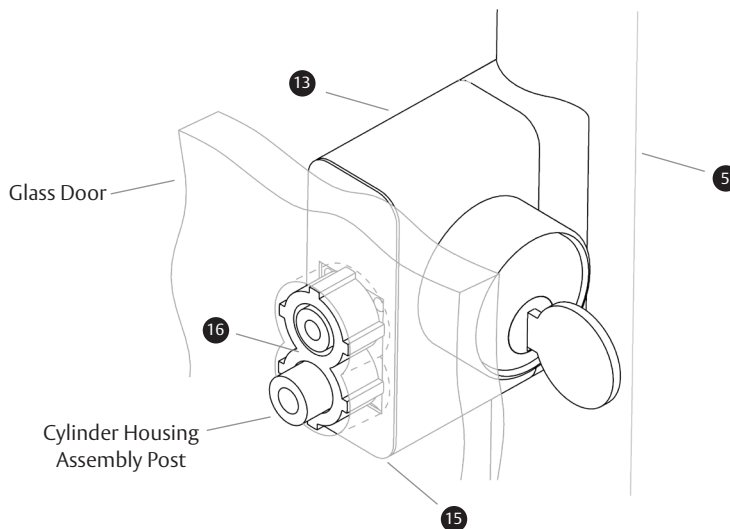
ASSA ABLOY

The global leader in
door opening solutions

2.3.4 Install Mating Pull

- Place the Mating Pull Assembly ⑤ on the Door.
- Install the Mating Pull-Cylinder Housing Assembly ⑬ with the Door Gasket ⑮ through the holes in the Glass Door.
- Make sure that the posts that are sticking out from the Cylinder Housing Assembly ⑬ go through the Door Bushing ⑯.

- ⑤ Mating Pull Assembly
- ⑬ Mating Pull-Cylinder Housing Assembly
- ⑮ Door Gasket
- ⑯ Door Bushing

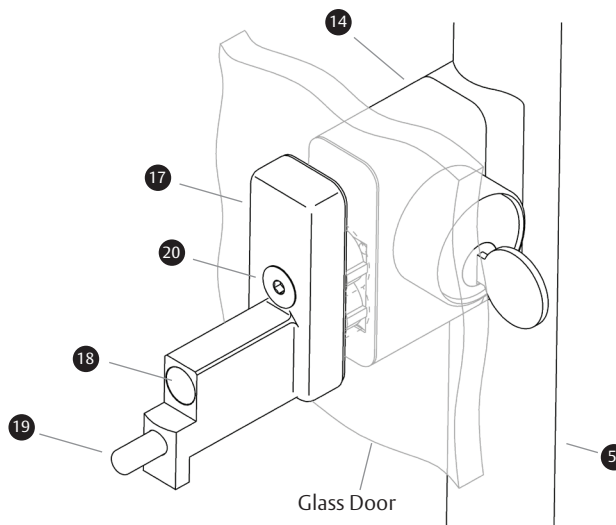


2.3.5 Install Actuator Post Assembly

- Install the Actuator Post Assembly ⑰ on top of the opening in the Glass Door to attach to the Cylinder Housing ⑭.
- Make sure that the Push Rod ⑱ goes through the bottom hole.
- Apply a small drop of Threadlocker to the threads of the Flat Head Socket Cap Screw (1/4"-20) ⑳.
- Install the Flat Head Socket Cap Screw (1/4"-20) ⑳ and secure until tight.

CAUTION: Make sure that the Spring Tube-Spring ⑲ and the Push Rod ⑱ are inserted into the Actuator Post Assembly ⑰.

- ⑰ Actuator Post Assembly
- ⑭ Cylinder Housing
- ⑱ Push Rod
- ⑳ Flat Head Socket Cap Screw (1/4"-20)
- ⑲ Spring Tube-Spring

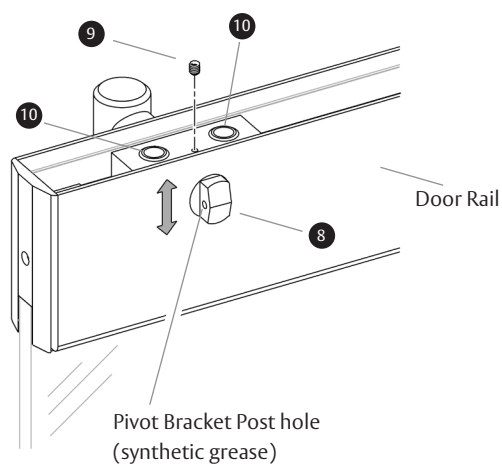
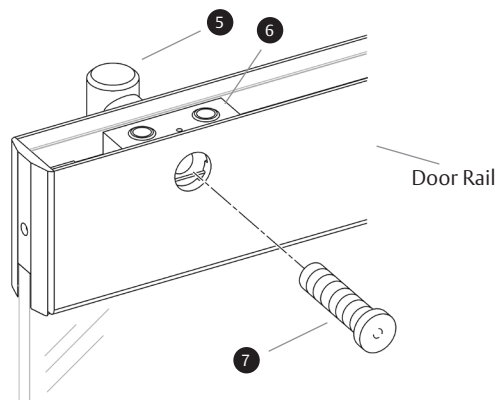


ASSA ABLOY

2.3.6 Install Vertical Door Mount

- Position the Adapter Block **6** on the inside of the Door Rail.
- Install the Mating Pull Assembly **5** through the Door Rail and up against the Adapter Block **6**.
- Apply a small drop of Threadlocker to the threads of the Socket Cap Screw (5/16"-18) **7**.
- Attach the Adapter Block **6** to the Mating Pull Assembly **5** with the Socket Cap Screw (5/16"-18) **7**.
- Install the Interior Pivot Bracket Post **8** on the Adapter Block **6**. Make sure that the Interior Pivot Bracket Post **8** is vertical after it is installed.
- Adjust the Adapter Block Posts **10** until the Interior Pivot Bracket Post **8** is centered vertically.
- Align the Interior Pivot Bracket Post **8** until the slot can be seen on the threads of the post. This is where the Set Screw (8-32) **9** will install.
- Make sure to align the hole on the Door Rail with the hole on the Adapter Block **6**.
- Apply a small drop of Threadlocker to the threads of the Set Screw (8-32) **9**.
- Install the Set Screw (8-32) **9**.
- Apply Synthetic Grease to the inside of the hole of the Interior Pivot Bracket Post **8**.

- 6** Adapter Block
- 5** Mating Pull Assembly
- 7** Socket Cap Screw (5/16"-18)
- 10** Adapter Block Posts
- 8** Interior Pivot Bracket Post
- 9** Set Screw (8-32)



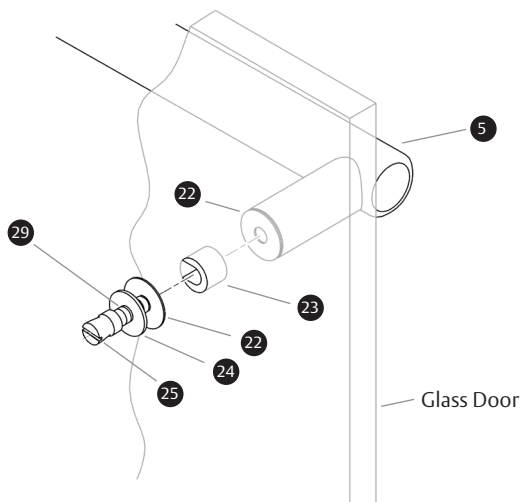
ASSA ABLOY

The global leader in
door opening solutions

2.3.7 Install Horizontal Door Mount

- Install the C Bushing (23) in the hole of the Glass Door.
- Position the Mating Pull Assembly (5) against the exterior side of the Glass Door.
- Apply a small drop of Threadlocker to the threads of the Stud (5/16"-18) (29).
- Slide the Metal Washer (24) onto the Stud (5/16"-18) (29) until it sits against the Conehead Union (5/16"-18) (25) on the interior side of the door.
- Slide one Plastic Washer (22) onto the Stud (5/16"-18) (29) so it sits against the Metal Washer (24) on the interior side of the door.
- Slide the Conehead Union (5/16"-18) (25) with the Plastic Washer (22) and the Metal Washer (24) through the C Bushing (23) in the hole in the Door.
- Slide the other Plastic Washer (22) onto the Stud (5/16"-18) (29) on the outside of the Door.
- Screw the Conehead Union (5/16"-18) (25) and the Stud (5/16"-18) (29) into the Mating Pull Assembly (5) Post until tight. Make sure that the Metal Washer (24) does not touch the Glass Door.

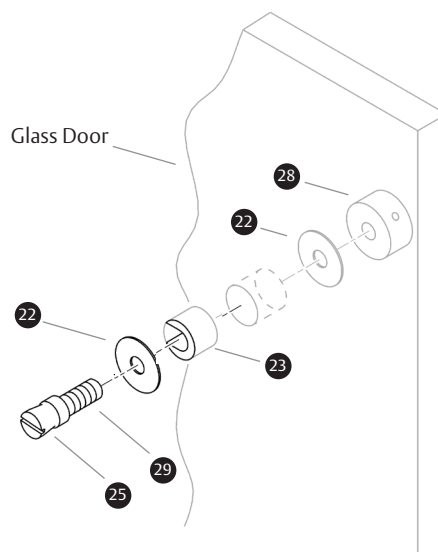
- (23) C Bushing
- (5) Mating Pull Assembly
- (29) Stud (5/16"-18)
- (24) Metal Washer
- (25) Conehead Union (5/16"-18)
- (22) Plastic Washer (x2)



2.3.8 Install Horizontal Door Mount (Deco End Cap Option)

- Install the C Bushing (23) in the hole of the Glass Door.
- Apply a small drop of Threadlocker to the threads of the Stud (5/16"-18) (29).
- Insert the Stud (5/16"-18) (29) into the Deco End Cap (28).
- Place one Plastic Washer (22) onto the Stud (5/16"-18) (29) until it's up against the Deco End Cap (28).
- Slide the Stud (5/16"-18) (29) with the Deco End Cap (28) through the C Bushing (23) in the hole in the Door on the exterior side of the door.
- Place one Plastic Washer (22) and the Metal Washer (24) onto the Stud (5/16"-18) (29) on the interior side of the Door.
- Apply a small drop of Threadlocker to the threads of the Stud (5/16"-18) (29).
- Screw the Conehead Union (5/16"-18) (25) onto the Stud (5/16"-18) (29) on the interior side of the Door.

- (23) C Bushing
- (5) Mating Pull Assembly
- (22) Plastic Washer (x2)
- (25) Conehead Union (5/16"-18)
- (29) Stud (5/16"-18)
- (28) Deco End Cap

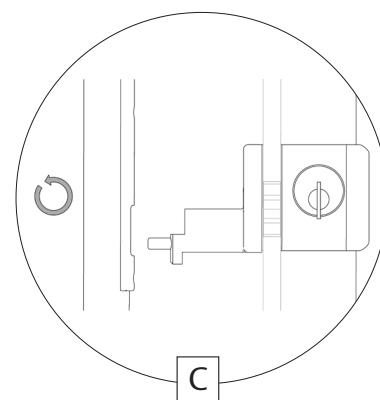
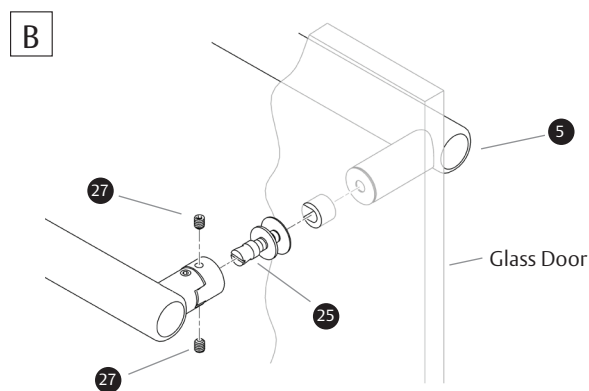
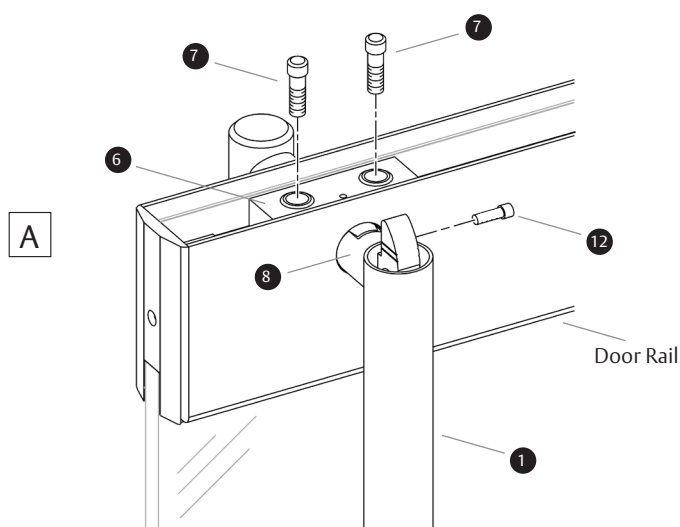
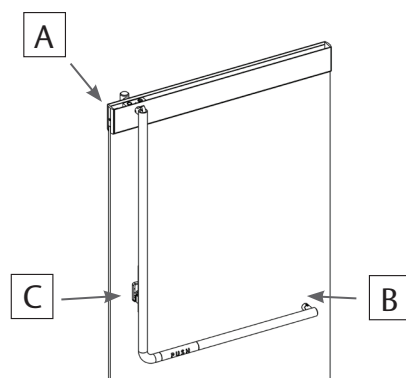


ASSA ABLOY

2.3.9 Install Panic Device on Rail Mount Door

- Push the Adaptor Block **6** forward to expose the Interior Pivot Bracket Post **8**.
- Use the tilt method to install the Panic Device Assembly **1**. Refer to Section 2.2.2 on page 9.
- Install the Panic Device Assembly **1** on the Interior Pivot Bracket Post **8** that is attached to the Adaptor Block **6**.
- Apply a small drop of Threadlocker to the threads of the Set Screw Pin (1/4"-20) **12**.
- Install the Set Screw Pin (1/4"-20) **12**.
- Align the Adaptor Block **6** with threaded holes (5/16"-18) inside of the Door Rail.
- Apply a small drop of Threadlocker to the threads of the Socket Cap Screws (5/16"-18) **7**.
- Install the Socket Cap Screws (5/16"-18) **7** and secure until tight.
- Apply a small drop of Threadlocker to the threads of the Set Screws (1/4"-20) **27**.
- Tighten down both Set Screws (1/4"-20) **27**.

- 6** Adapter Block
- 8** Interior Pivot Bracket Post
- 1** Panic Device Assembly
- 12** Set Screw Pin (1/4"-20)
- 7** Socket Cap Screw (5/16"-18) (x2)
- 5** Mating Pull Assembly
- 25** Conehead Union (5/16"-18)
- 27** Set Screws (1/4"-20)



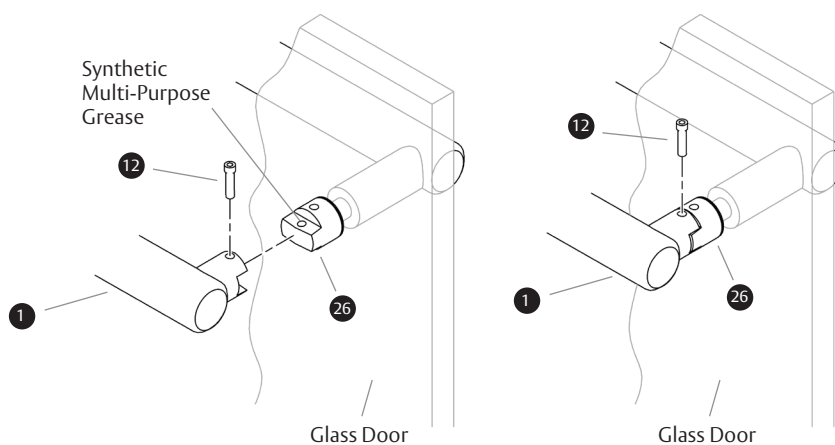
ASSA ABLOY

The global leader in
door opening solutions

2.3.10 Horizontal End Threadlocker and Lube Application

- Remove the Set Screw Pin **12** and move the Panic Device Assembly **1** to the side to allow access to the Interior Horizontal Post **26** hole.
- Apply Synthetic Multi-Purpose Grease (pea size) to the inside of the hole of the Interior Horizontal Post **26**.
- Install the Panic Device Assembly **1** Handle back on the Panic Device Assembly **1**.
- Apply a small drop of Threadlocker to the threads of the Set Screw Pin **12**.
- Install the Set Screw Pin **12**.

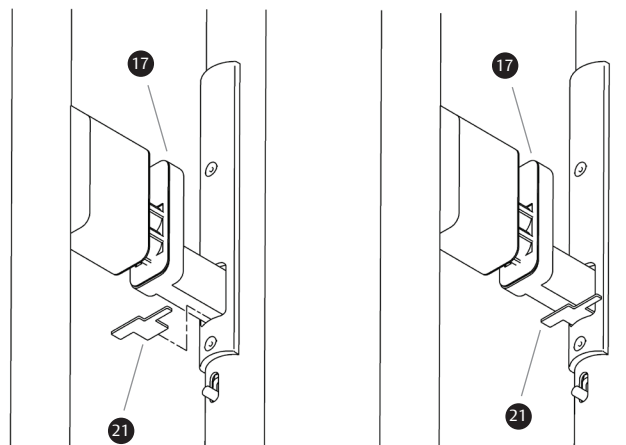
- 12** Set Screw Pin
- 1** Panic Device Assembly
- 26** Interior Horizontal Post



2.3.11 Align Actuator Gauge

- Install the Latch and Actuator Gauge **21** in the bottom of the Actuator Post Assembly **17**.
- If the Latch and Actuator Gauge **21** cannot be installed, the alignment must be adjusted.
- Realign the Panic Device Assembly as necessary. Refer to Section 2.3.2, Install Door Bushings.
- Do not operate the Panic Device if the Latch and Actuator Gauge **21** does not fit.

- 21** Latch and Actuator Gauge
- 17** Actuator Post Assembly



ASSA ABLOY

Notes

ASSA ABLOY

Description	Quantity
❶ Panic Device Assembly	1
❷ Vertical Door Mount Assembly	1
❸ Actuator Post-Cylinder Housing Assembly	1
❹ Horizontal Door Mount Assembly	1
❺ Mating Pull Assembly	1
❻ Exterior Pivot Bracket Assembly	1
❼ Interior Pivot Bracket Assembly	1
❽ Flat Head Socket Screw (5/16"-18)	1
❾ Set Screw Pin (1/4"-20)	2
❿ Mating Pull-Cylinder Housing Assembly	1
⓫ Cylinder Housing	1
⓬ Door Gasket	2
⓭ Door Bushing	4

Description	Quantity
⓮ Actuator Post Assembly	1
⓯ Push Rod	1
⓰ Spring Tube-Spring	1
⓱ Flat Head Socket Cap Screw (1/4"-20)	1
⓲ Latch and Actuator Gauge	1
⓳ Plastic Washer	2
⓴ C Bushing	1
⓵ Metal Washer	1
⓶ Conehead Union (5/16"-18)	1
⓷ Interior Horizontal Post	1
⓸ Set Screw (1/4"-20)	2
⓹ Deco End Cap	1
⓺ Stud (5/16"-18)	1

ASSA ABLOY

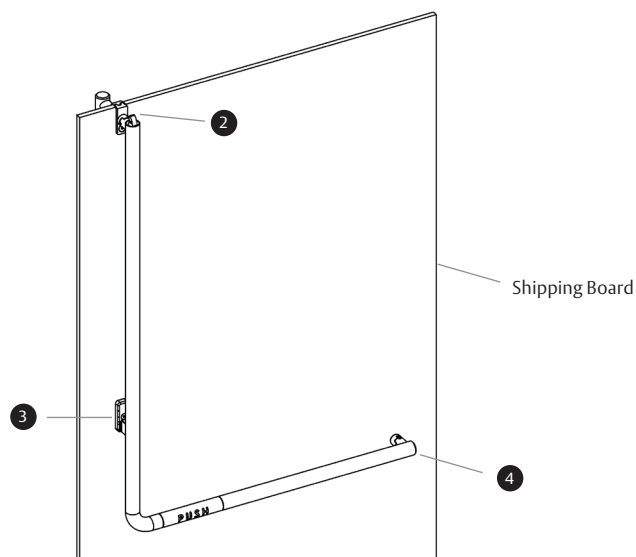
The global leader in
door opening solutions

3.2 Removal from Packaging - All Glass Doors

3.2.1 Introduction

- The Panic Device Assembly comes mounted on a Shipping Board inside a shipping crate.
- Before removing from the Shipping Board, make sure that the device is in the un-dogged position. Refer to Introduction, page 4.
- Most of the hardware will be reused. Do not discard any parts at this time.
- Remove the Shipping Board from the shipping crate.
- Make sure that the Vertical Door Mount Assembly **2**, Actuator Post-Cylinder Housing Assembly **3**, and Horizontal Door Mount Assembly **4** are still attached to the Shipping Board when removing from the crate.

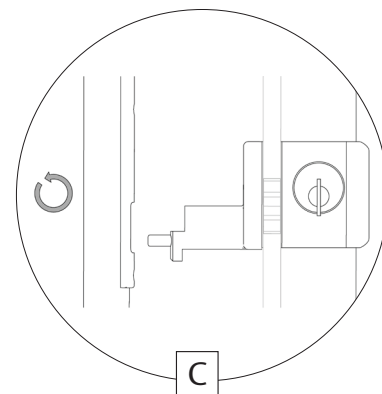
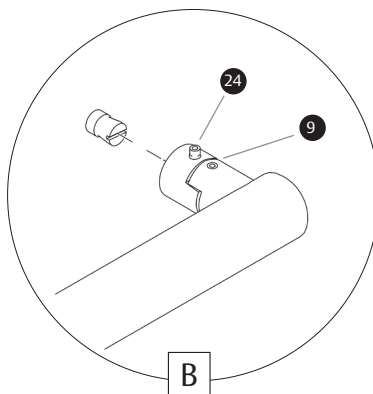
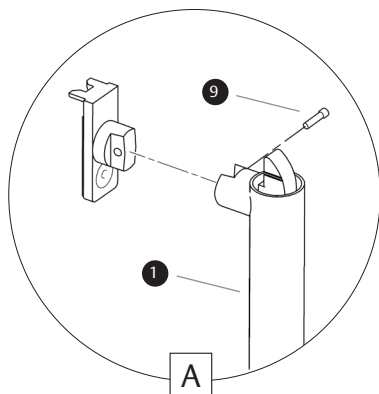
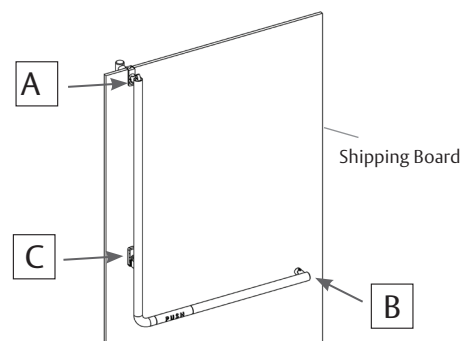
- 2** Vertical Door Mount Assembly
- 3** Actuator Post-Cylinder Housing Assembly
- 4** Horizontal Door Mount Assembly



3.2.2 Remove Panic Device from Shipping Board

- Remove the Set Screw Pin **9** from the Panic Device Assembly **1**.
- Loosen the two Set Screws (1/4"-20) **24** on the free end. The Set Screws (1/4"-20) **24** are not removed in this step.
- Pull the Panic Device **1** away from the Shipping Board by tilting the device.

- 9** Set Screw Pin
- 1** Panic Device Assembly
- 24** Set Screws (1/4"-20)

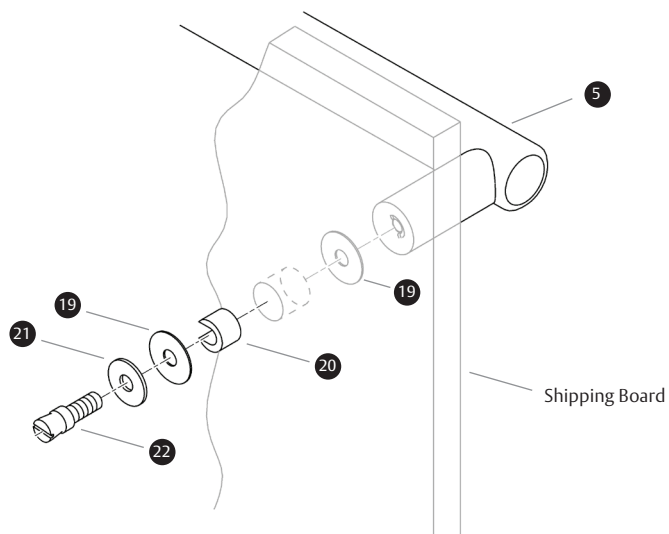


ASSA ABLOY

3.2.3 Remove Horizontal Door Mount

- Unscrew and remove the Conehead Union (5/16"-18) 22.
- Remove the two Plastic Washers 19, Metal Washer 21, and C Bushing 20.

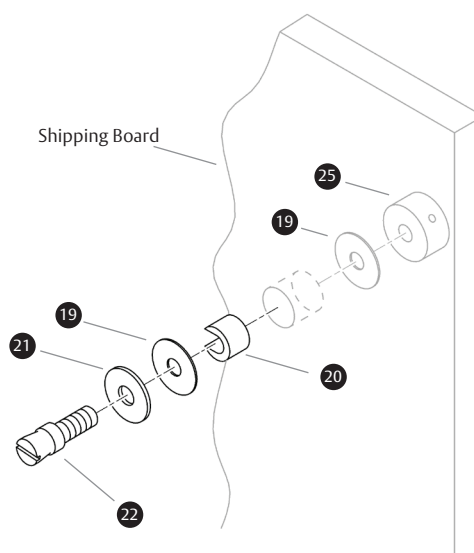
- 5 Mating Pull Assembly
- 22 Conehead Union (5/16"-18)
- 19 Plastic Washer (x2)
- 21 Metal Washer
- 20 C Bushing



3.2.4 Remove Horizontal Door Mount (Deco End Cap Option)

- Unscrew and remove the Conehead Union (5/16"-18) 22.
- Remove the Deco End Cap 25
- Remove the two Plastic Washers 19, Metal Washer 21, and C Bushing 20.

- 25 Deco End Cap
- 22 Conehead Union (5/16"-18)
- 19 Plastic Washer (x2)
- 21 Metal Washer
- 20 C Bushing



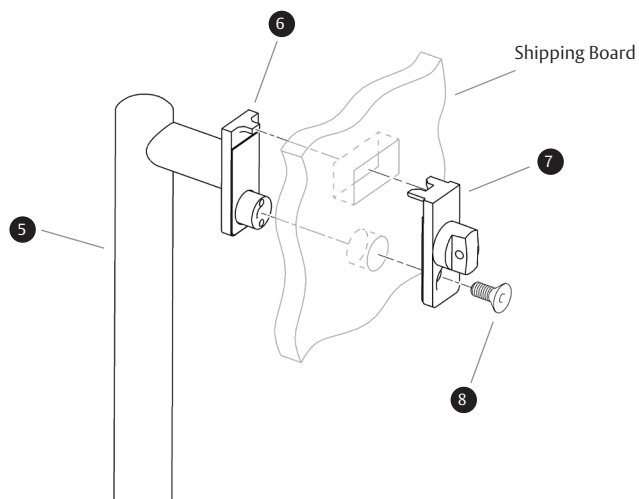
ASSA ABLOY

The global leader in
door opening solutions

3.2.5 Remove Vertical Door Mount

- Remove the Flat Head Socket Screw (5/16"-18) ⑧ from the Interior Pivot Bracket Assembly ⑦.
- Remove the Interior Pivot Bracket Assembly ⑦ from the Shipping Board.

- ⑧ Flat Head Socket Screw (5/16"-18)
- ⑦ Interior Pivot Bracket Assembly
- ⑥ Exterior Pivot Bracket Assembly
- ⑤ Mating Pull Assembly

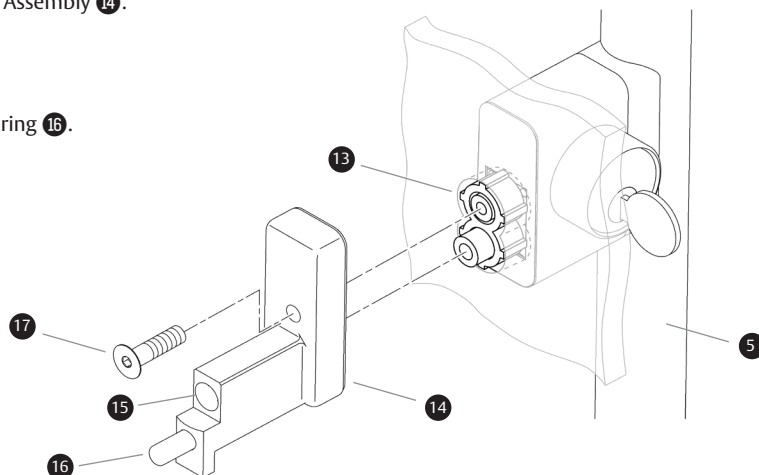


3.2.6 Remove Actuator Post Assembly

- Remove the Flat Head Socket Cap Screw (1/4"-20) ⑪.
- Remove the Actuator Post Assembly ⑭, Push Rod ⑮, and Spring Tube-Spring ⑯ from the Shipping Board.
- Hold the Mating Pull ⑤ in place while removing the Actuator Post Assembly ⑭.
- Remove the Mating Pull ⑤ from the Shipping Board.
- Remove the Door Bushing ⑬.

CAUTION: Make sure to contain the Spring inside the Spring Tube-Spring ⑯.

- ⑪ Flat Head Socket Cap Screw (1/4"-20)
- ⑭ Actuator Post Assembly
- ⑮ Push Rod
- ⑯ Spring Tube-Spring
- ⑤ Mating Pull Assembly
- ⑬ Door Bushing



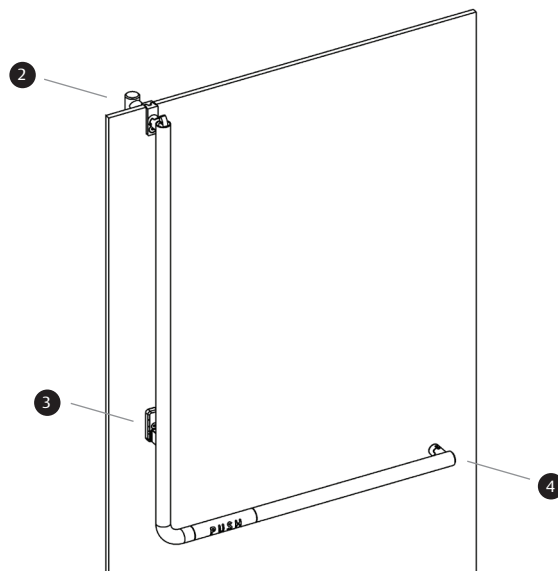
ASSA ABLOY

3.3 Panic Device Installation - All Glass Doors

3.3.1 Install Panic Device on All Glass Door

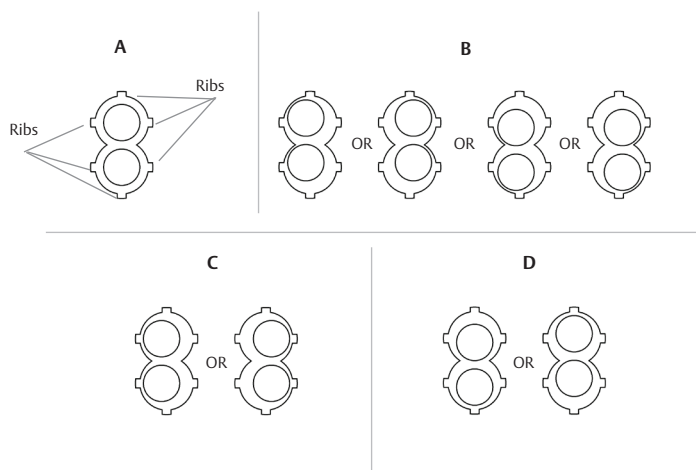
- Lay the glass flat with the exterior side facing down on a pair of saw horses.
- Make sure that the Door Rails are installed per manufacturer's specifications.

- ② Vertical Door Mount Assembly
- ③ Actuator Post-Cylinder Housing Assembly
- ④ Horizontal Door Mount Assembly



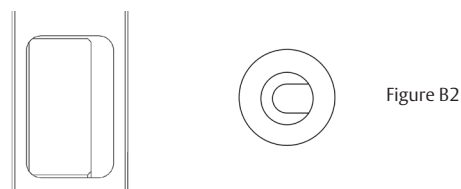
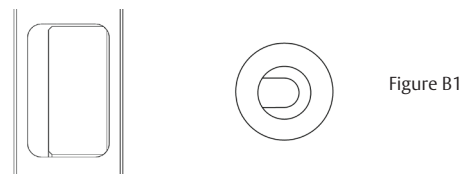
3.3.2 Install Door Bushings

- There are four Door Bushings ⑬ in each package.
- Below are the different configurations of the Door Bushings ⑬.
- Choose the Door Bushings ⑬ configuration that best fits your Panic Device Assembly Installation and centers the actuator post in the tube opening.
- Each Door Bushing ⑬ contains 6 ribs.
- Removal of the rib material may be necessary to ensure a proper fit.



3.3.3 Install C Bushing

- You can adjust the C Bushing ⑳ by rotating it 360 degrees.
- Make the necessary adjustment to get equal spacing between the sides of the Actuator Post Assembly ⑭ and the tube opening.
- If there is friction against the right side, adjust the opening of the C Bushing ⑳ to the right. Refer to Figure B1.
- If there is friction against the left side, adjust the opening of the C Bushing ⑳ to the left. Refer to Figure B2.

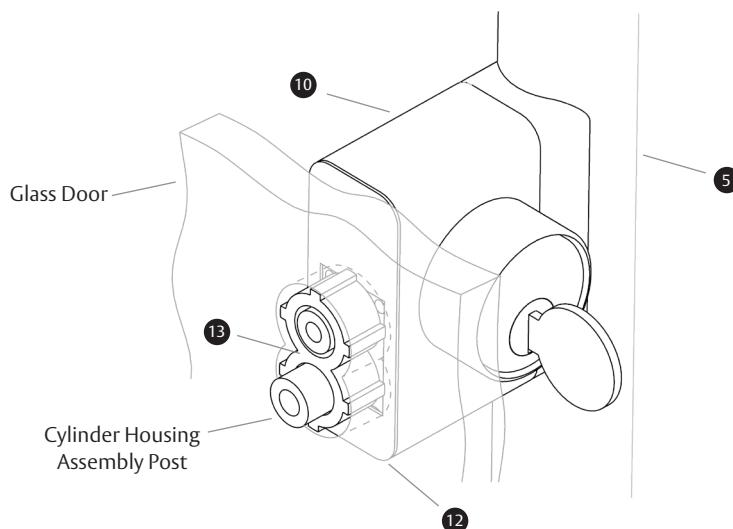


ASSA ABLOY

3.3.4 Install Mating Pull

- Place the Mating Pull Assembly ⑤ on the Door.
- Install the Mating Pull-Cylinder Housing Assembly ⑩ with the Door Gasket ⑫ through the holes in the Glass Door.
- Make sure that the posts that are sticking out from the Mating Pull Cylinder Housing Assembly ⑩ go through the Door Bushing ⑬.

- ⑤ Mating Pull Assembly
- ⑩ Mating Pull-Cylinder Housing Assembly
- ⑫ Door Gasket
- ⑬ Door Bushing

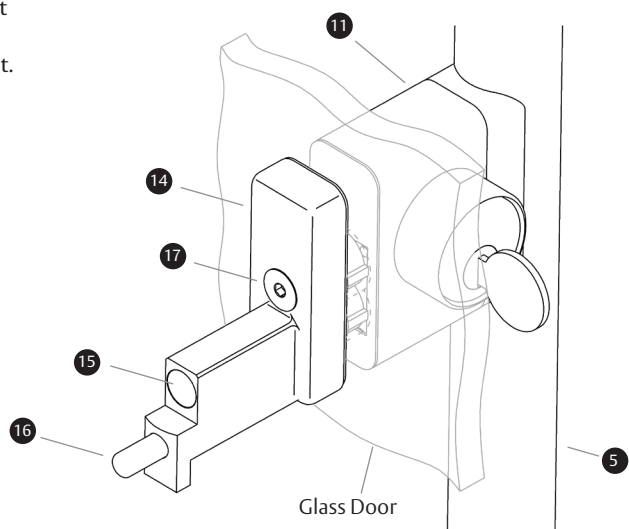


3.3.5 Install Actuator Post Assembly

- Install the Actuator Post Assembly ⑭ on top of the opening in the Glass Door to attach to the Cylinder Housing ⑪.
- Make sure that the Push Rod ⑮ goes through the bottom hole.
- Apply a small drop of Threadlocker to the threads of the Flat Head Socket Cap Screw (1/4"-20) ⑰.
- Install the Flat Head Socket Cap Screw (1/4"-20) ⑰ and secure until tight.

CAUTION: Make sure that the Spring Tube-Spring ⑯ and the Push Rod ⑮ are inserted into the Actuator Post Assembly ⑭.

- ⑭ Actuator Post Assembly
- ⑪ Cylinder Housing
- ⑮ Push Rod
- ⑰ Flat Head Socket Cap Screw (1/4"-20)
- ⑯ Spring Tube-Spring

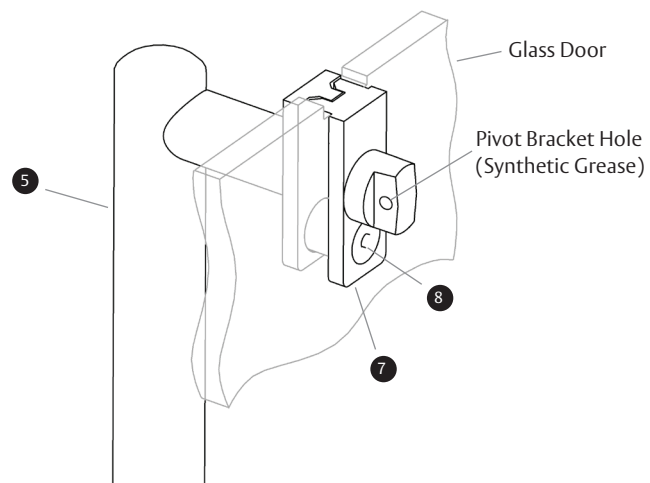
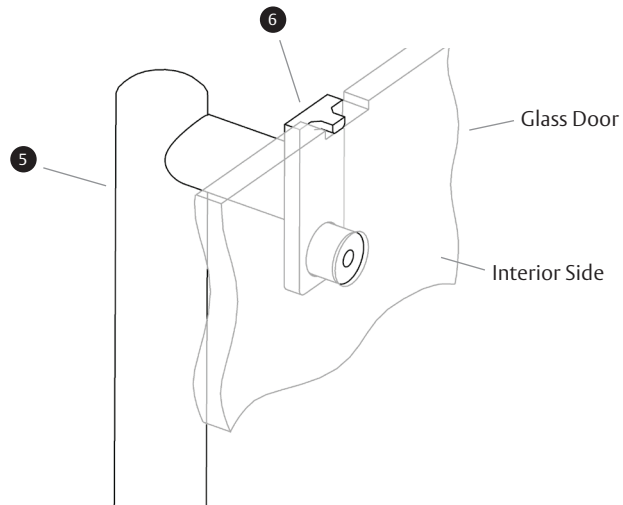


ASSA ABLOY

3.3.6 Install Vertical Door Mount

- Hold the Mating Pull Assembly **5** on the exterior side of the Glass Door.
- Install the Interior Pivot Bracket Assembly **7** so that it aligns with the Exterior Pivot Bracket Assembly **6**.
- Apply a small drop of Threadlocker to the threads of the Flat Head Socket Screw (5/16"-18) **8**.
- Attach the Interior Pivot Bracket Assembly **7** to the Exterior Pivot Bracket Assembly **6** with the Flat Head Socket Screw (5/16"-18) **8**.
- Apply Synthetic Grease to the inside of the hole of the Interior Pivot Bracket Assembly **7**.

- 5** Mating Pull Assembly
- 7** Interior Pivot Bracket Assembly
- 6** Exterior Pivot Bracket Assembly
- 8** Flat Head Socket Screw (5/16"-18)



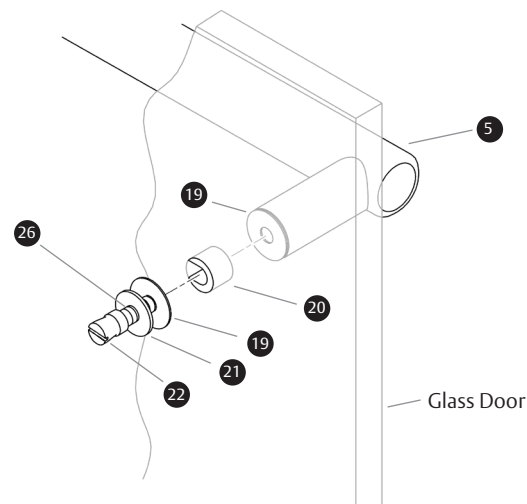
ASSA ABLOY

The global leader in
door opening solutions

3.3.7 Install Horizontal Door Mount

- Install the C Bushing 20 in the hole of the Glass Door.
- Position the Mating Pull Assembly 5 against the exterior side of the Glass Door.
- Apply a small drop of Threadlocker to the threads of the Stud (5/16"-18) 26.
- Slide the Metal Washer 21 onto the Stud (5/16"-18) 26 until it sits against the Conehead Union (5/16"-18) 22 on the interior side of the Glass Door.
- Slide one Plastic Washer 19 onto the Stud (5/16"-18) 26 so it sits against the Metal Washer 21 on the interior side of the Glass Door.
- Slide the Conehead Union (5/16"-18) 22 with the Plastic Washer 19 and the Metal Washer 21 through the C Bushing 20 in the hole in the Glass Door.
- Slide the other Plastic Washer 19 onto the Stud (5/16"-18) 26 on the outside of the Glass Door.
- Screw the Conehead Union (5/16"-18) 22 and the Stud (5/16"-18) 26 into the Mating Pull Assembly 5 Post until tight. Make sure that the Metal Washer 21 does not touch the Glass Door.

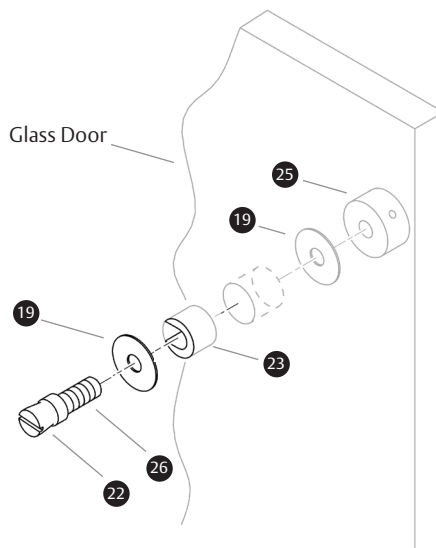
- 20 C Bushing
- 5 Mating Pull Assembly
- 26 Stud (5/16"-18)
- 21 Metal Washer
- 22 Conehead Union (5/16"-18)
- 19 Plastic Washer (x2)



3.3.8 Install Horizontal Door Mount (Deco End Cap Option)

- Install the C Bushing 20 in the hole of the Glass Door.
- Apply a small drop of Threadlocker to the threads of the Stud (5/16"-18) 26.
- Insert the Stud (5/16"-18) 26 into the Deco End Cap 25.
- Place one Plastic Washer 19 onto the Stud (5/16"-18) 26 until it's up against the Deco End Cap 25.
- Slide the Stud (5/16"-18) 26 with the Deco End Cap 25 through the C Bushing 20 in the hole in the Door on the exterior side of the door.
- Place one Plastic Washer 19 and the Metal Washer 21 onto the Stud (5/16"-18) 26 on the interior side of the Door.
- Apply a small drop of Threadlocker to the threads of the Stud (5/16"-18) 26.
- Screw the Conehead Union (5/16"-18) 22 onto the Stud (5/16"-18) 26 on the interior side of the Door.

- 20 C Bushing
- 5 Mating Pull Assembly
- 19 Plastic Washer (x2)
- 22 Conehead Union (5/16"-18)
- 26 Stud (5/16"-18)
- 25 Deco End Cap

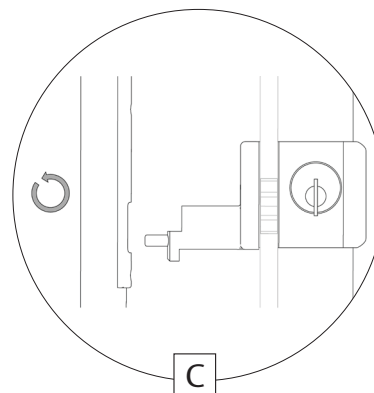
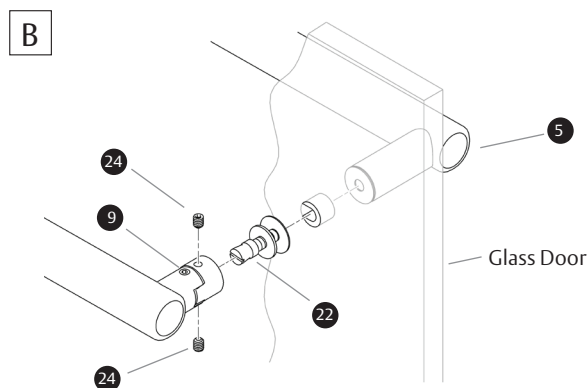
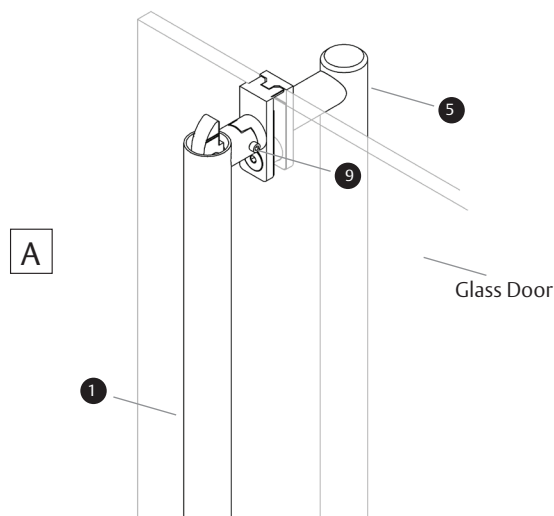
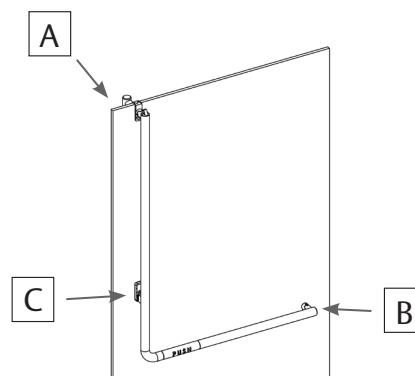


ASSA ABLOY

3.3.9 Install Panic Device on All Glass Door

- Use the tilt method to install the Panic Device Assembly ① on the Glass Door. Refer to Section 3.2.2 on page 21.
- Apply a small drop of Threadlocker to the threads of the Set Screw Pin (1/4"-20) ⑨.
- Install the Set Screw Pin (1/4"-20) ⑨.
- Attach the Panic Device Assembly ① to the Conehead Union (5/16"-18) ②②.
- Install the Set Screws (1/4"-20) ②④ and secure until tight.

- ① Panic Device Assembly
- ⑤ Mating Pull Assembly
- ⑨ Set Screw Pin (1/4"-20)
- ②② Conehead Union (5/16"-18)
- ②④ Set Screws (1/4"-20)



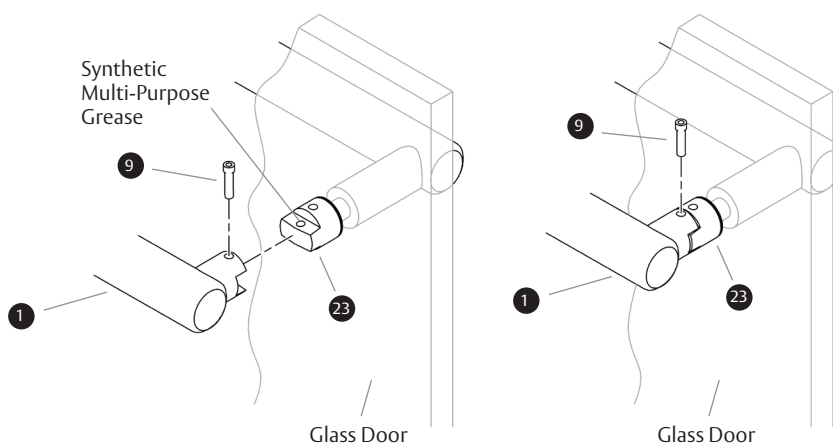
ASSA ABLOY

The global leader in
door opening solutions

3.3.10 Horizontal End Threadlocker and Lube Application

- Remove the Set Screw Pin ⑨ and move the Panic Device Assembly ① to the side to allow access to the Interior Horizontal Post ②③ hole.
- Apply Synthetic Multi-Purpose Grease (pea size) to the inside of the hole of the Interior Horizontal Post ②③.
- Install the Panic Device Assembly ① Handle back on the Panic Device Assembly ①.
- Apply a small drop of Threadlocker to the threads of the Set Screw Pin ⑨.
- Install the Set Screw Pin ⑨.

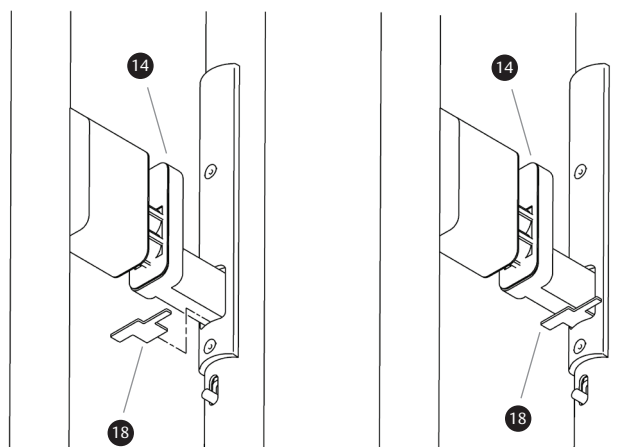
- ⑨ Set Screw Pin
- ① Panic Device Assembly
- ②③ Interior Horizontal Post



3.3.11 Align Actuator Gauge

- Install the Latch and Actuator Gauge ⑱ in the bottom of the Actuator Post Assembly ⑭.
- If the Latch and Actuator Gauge ⑱ cannot be installed, the alignment must be adjusted.
- Realign the Panic Device Assembly as necessary. Refer to Section 3.3.2, Install Door Bushings.
- Do not operate the Panic Device if the Latch and Actuator Gauge ⑱ does not fit.

- ⑱ Latch and Actuator Gauge
- ⑭ Actuator Post Assembly



ASSA ABLOY

4. Strike Installation

4.1 Header Preparation for Single and Double Manual Strikes with Adjustable Door Stops

- Prepare the Header with 5/16"-18 tapped holes.
- Use Threadlocker on the Socket Cap Screws (5/16"-18 x 1") and the 1/4" hex tool.
- Use the shims as required.

Single Door

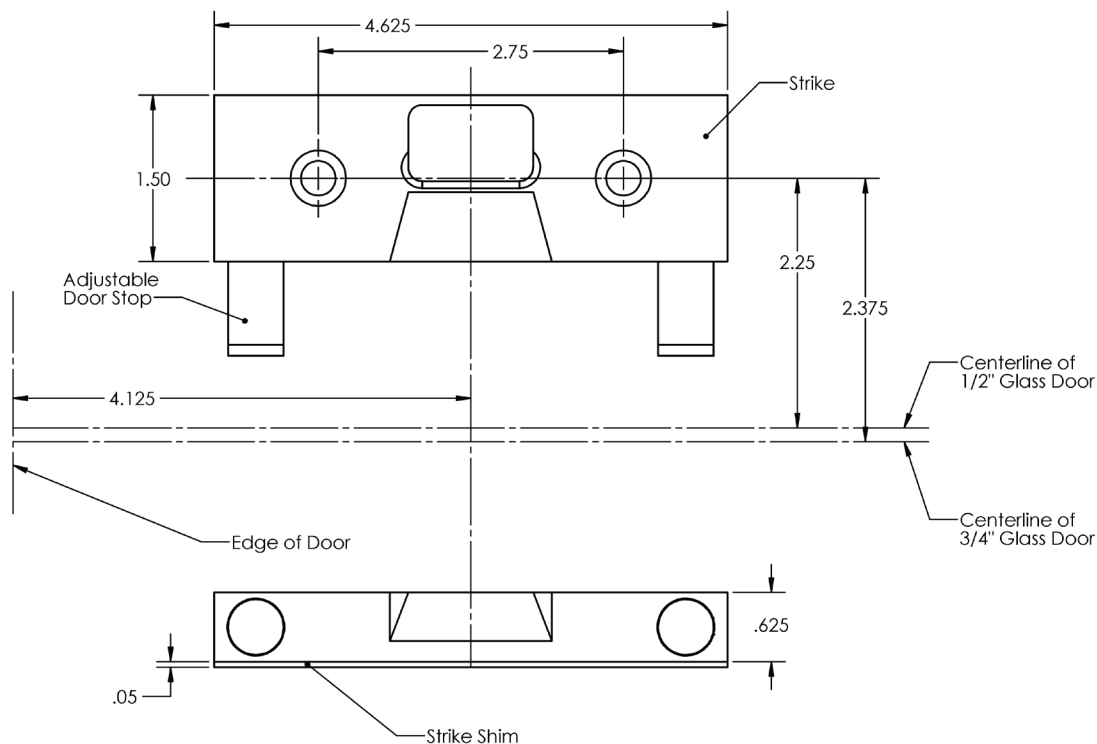


Figure 4-1

ASSA ABLOY

The global leader in
door opening solutions

4.1 Header Preparation for Single and Double Manual Strikes with Adjustable Door Stops (Continued)

Double Door

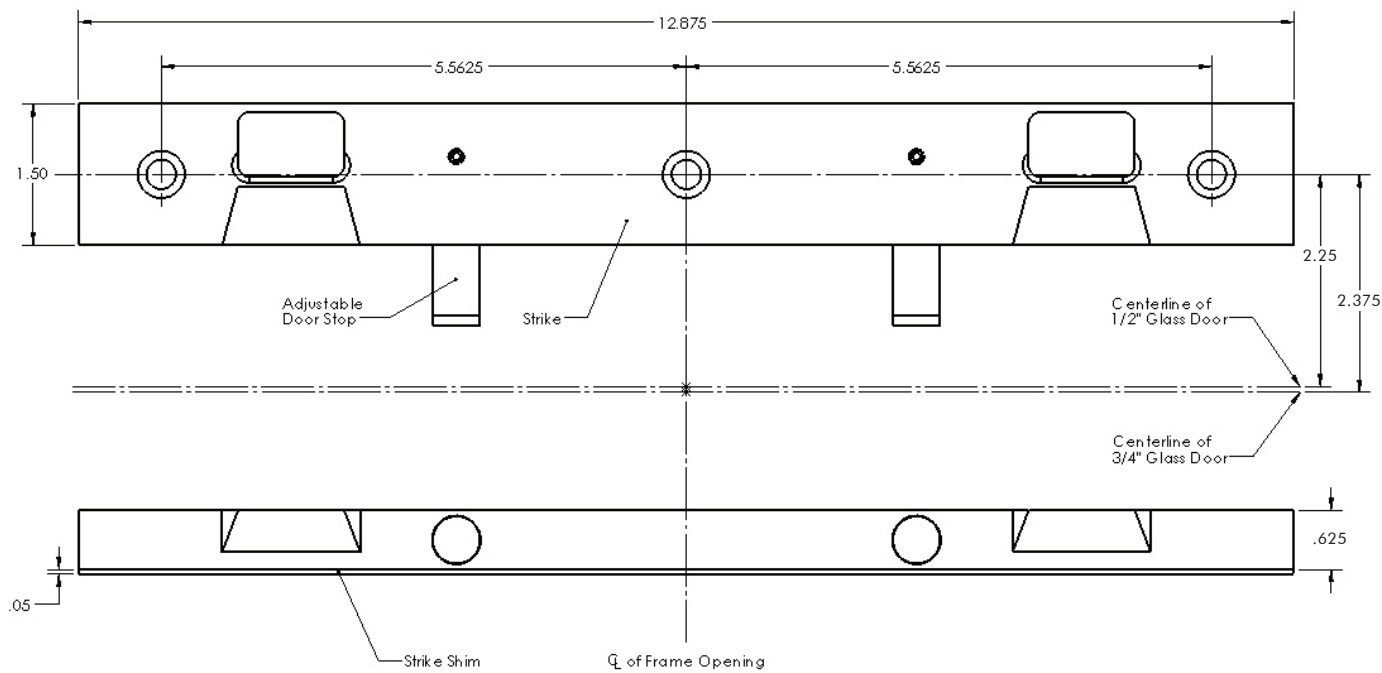
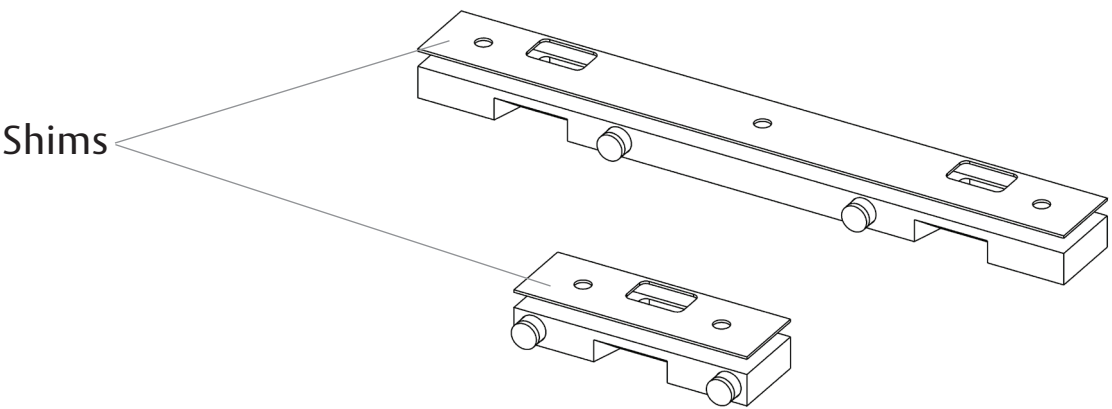


Figure 4-2



ASSA ABLOY

4.2 Header Preparation for Single and Double Electrical Strikes with Adjustable Door Stops

- Prepare the Header with 5/16"-18 threaded holes.
- Use Threadlocker on the Socket Cap Screws (5/16"-18 x 1") and the 1/4" hex tool.

Single Door

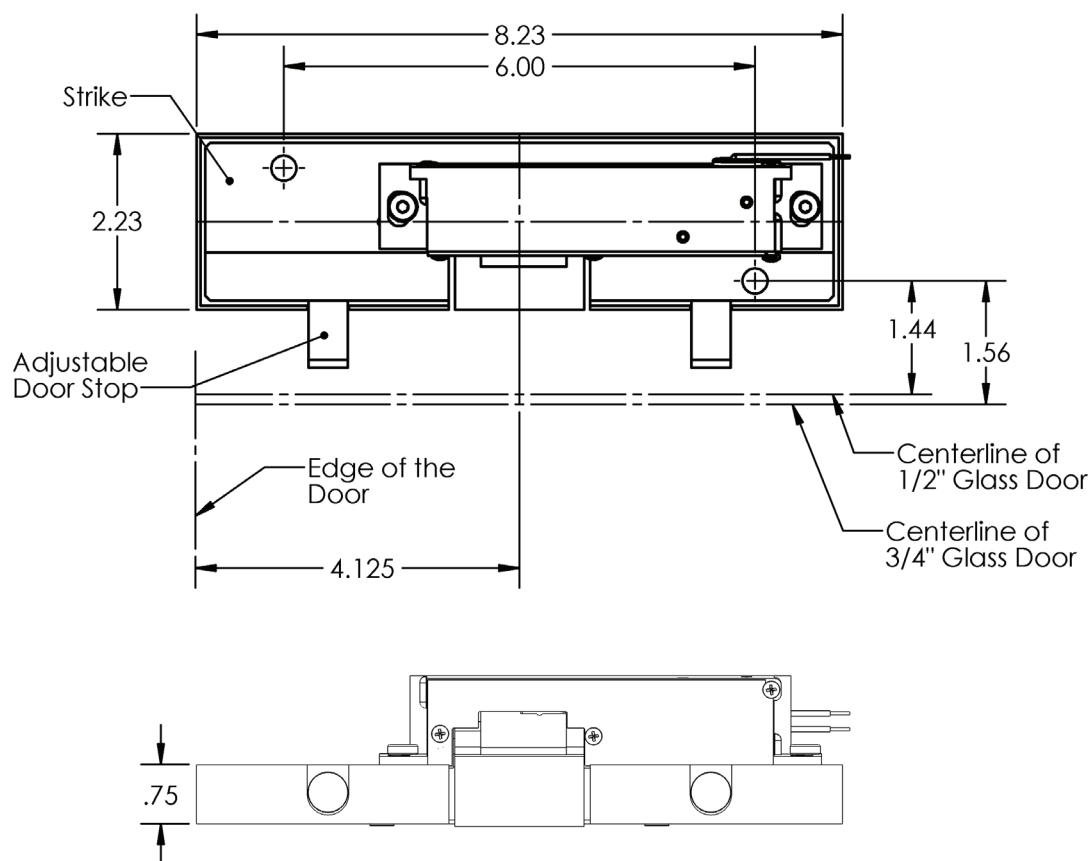


Figure 4-3

ASSA ABLOY

The global leader in
door opening solutions

4.2 Header Preparation for Single and Double Adjustable Door Stop with Electrical Strike (Continued)

Double Doors

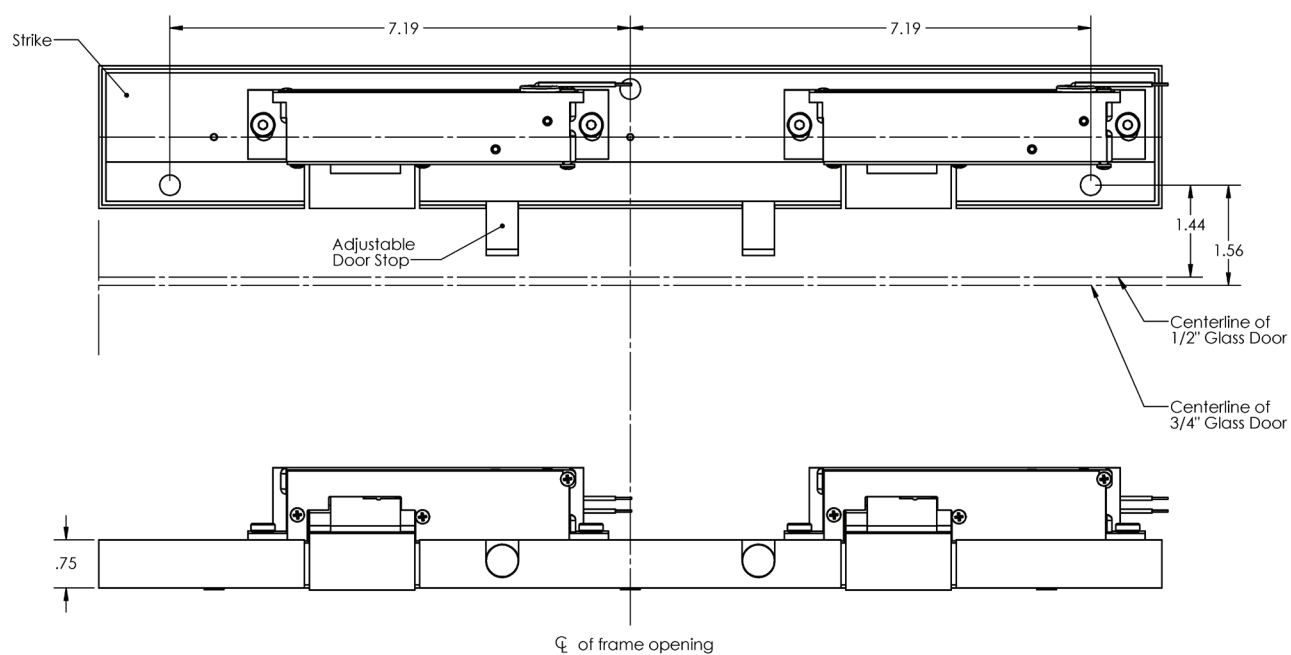


Figure 4-4

ASSA ABLOY

5. Door Stop Adjustment

5.1 Installation and Adjustment of Door Stop-Strike

INSTALLATION

- Attach the strike to the header using the Socket Cap Screws (5/16"-18).
- Close the door. The door should come to rest on the rubber stop pads.
- There should be approximately 1/16" play between the latch face and the strike face.
- The retractable latch should automatically move upward and engage in the strike.
- If the retractable latch does not engage in the strike, move the door stops in.
- If the retractable latch is loose inside the strike (door is rattling), move the door stops out.
- Tighten 8-32 screws to lock down adjustment door stops.

ADJUSTMENT

- To adjust the stop, loosen the 8-32 set screws and remove the rubber end pieces.
- Use an Allen Wrench (1/4") to rotate in or out as needed.

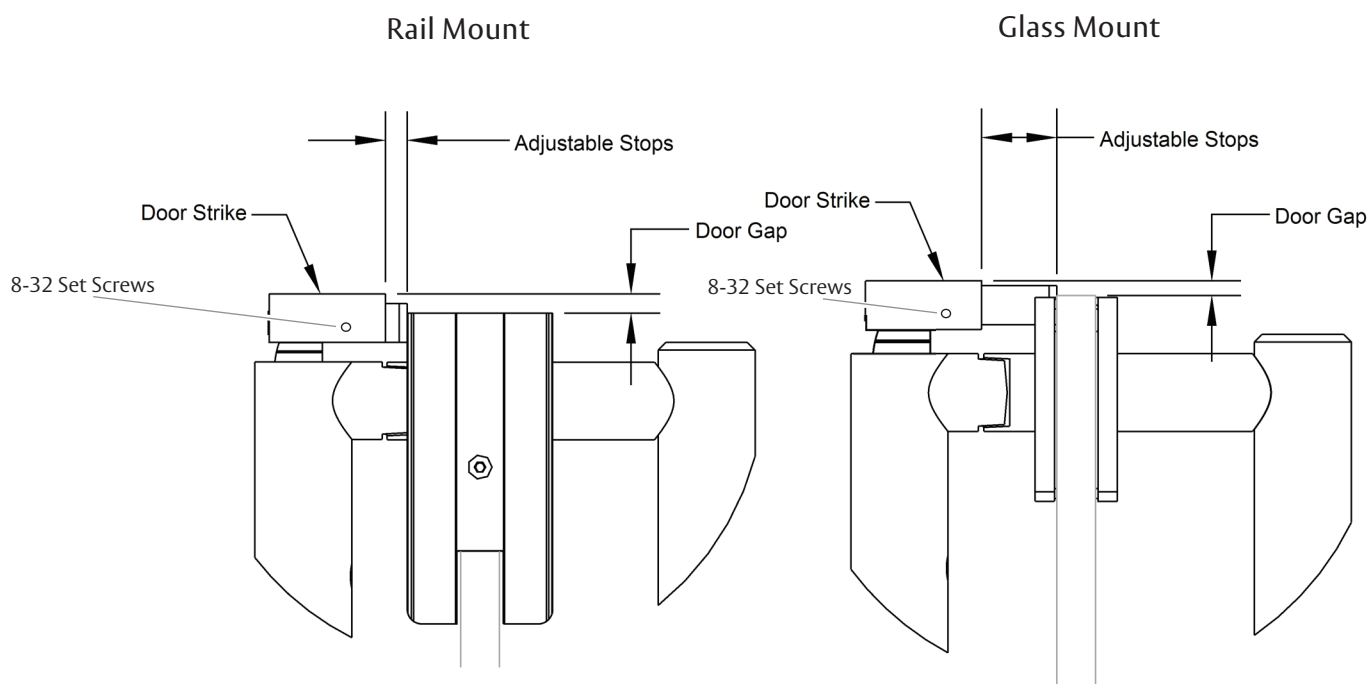


Figure 5-1

ASSA ABLOY

The global leader in
door opening solutions

5.1 Installation and Adjustment of Door Stop-Strike (Continued)

USING THE LATCH AND ACTUATOR GAUGE

- If the Gauge has any play, adjust the Strike by adding shims. Refer to Figure 5-2 for the minimum engagement.
- If the Gauge has any play, adjust the Strike by adding shims. Refer to Figure 5-3 for the maximum engagement.

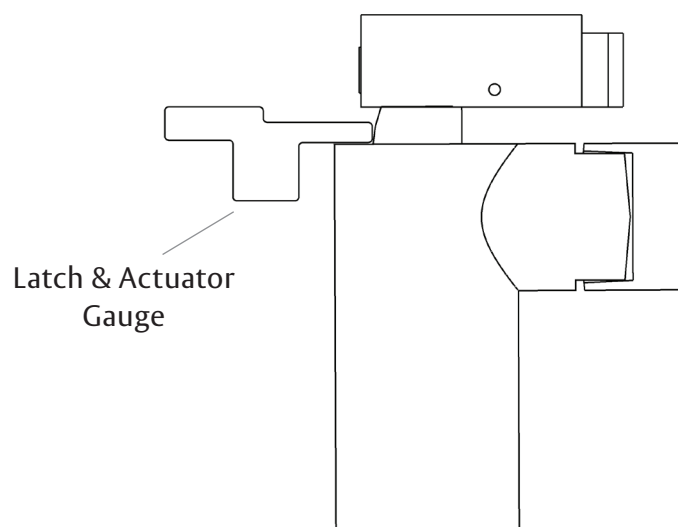


Figure 5-2

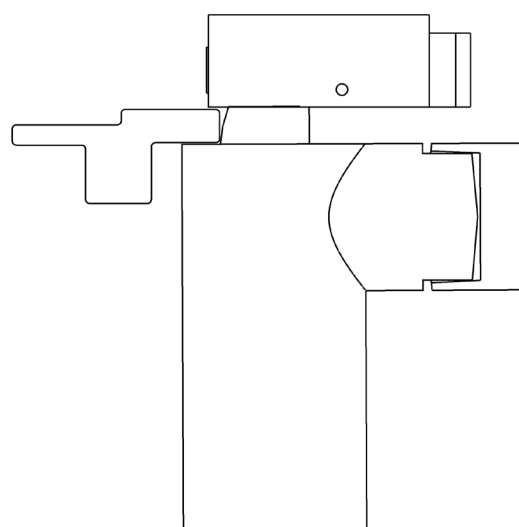


Figure 5-3

ASSA ABLOY

5.2 Latch Adjustment for Proper Engaging with the Strike

- The Latch can be adjusted up and down. Figures 5-5 and 5-6 show the maximum and the minimum dimensions for the Strike location.
- Remove the Flat Head Screw (6-32) at the top of the Panic Device Assembly Handle with a 5/64" Hex Tool.
- Rotate the Latch a full 360 degrees turn in the left or right direction to get the height adjustment required. Turn in the counter clockwise direction to increase the height. Turn in the clockwise direction to decrease the height.
- Make sure that both of the holes are aligned.
- Apply Threadlocker to the screw before it is replaced.
- After the height adjustment is made, replace the Flat Head Screw (6-32).
- **CAUTION:** If the screw is not replaced, the latch may rotate. This may cause the Latch to disengage.
- **CAUTION:** Do not remove the Pan Head Machine Screw (4-40).

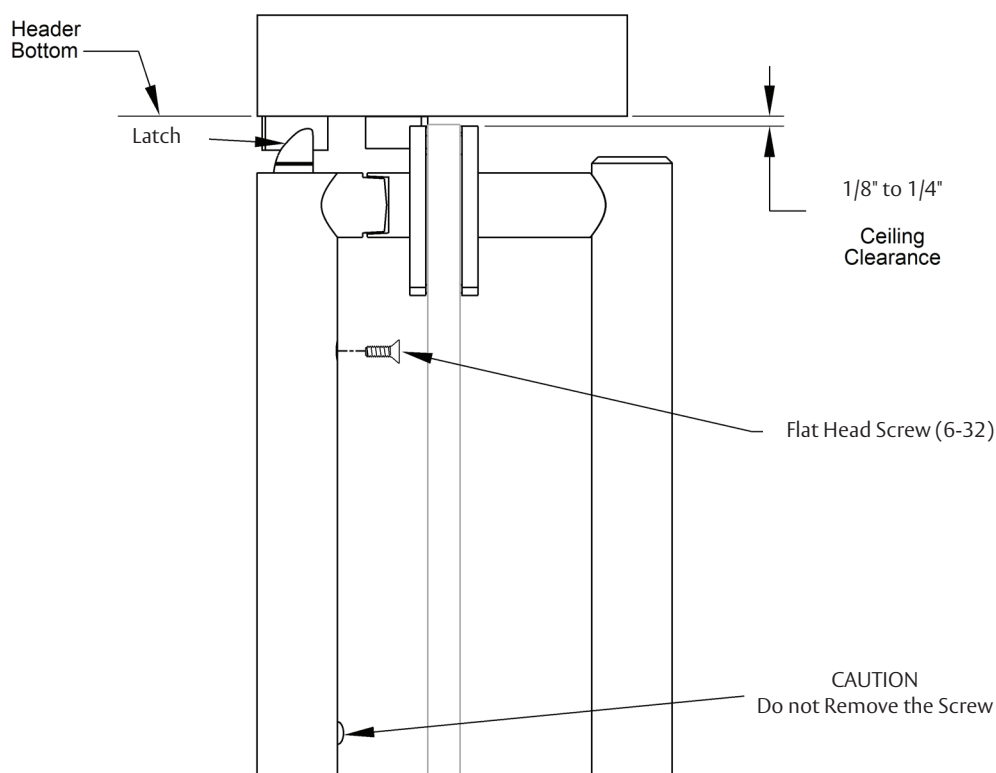


Figure 5-4

ASSA ABLOY

The global leader in
door opening solutions

5.2 Latch Adjustment for Proper Engaging with the Strike (Continued)

- Figure 5-5 is for the maximum height from the top of the Tube to the bottom of the Strike.
- Figure 5-6 is for the minimum height from the top of the Tube to the bottom of the Strike.
- One turn of the Latch equals approximately 0.042 inches.

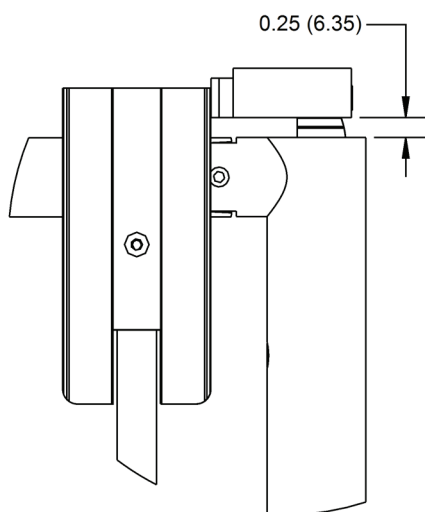


Figure 5-5

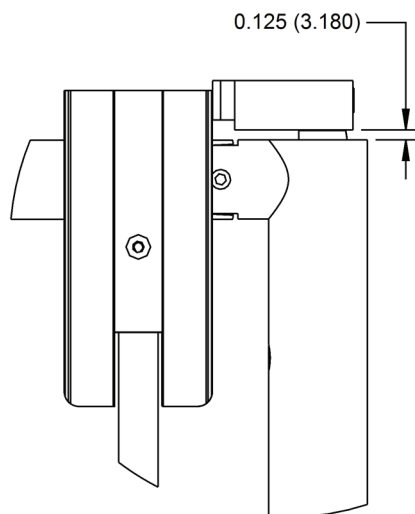


Figure 5-6

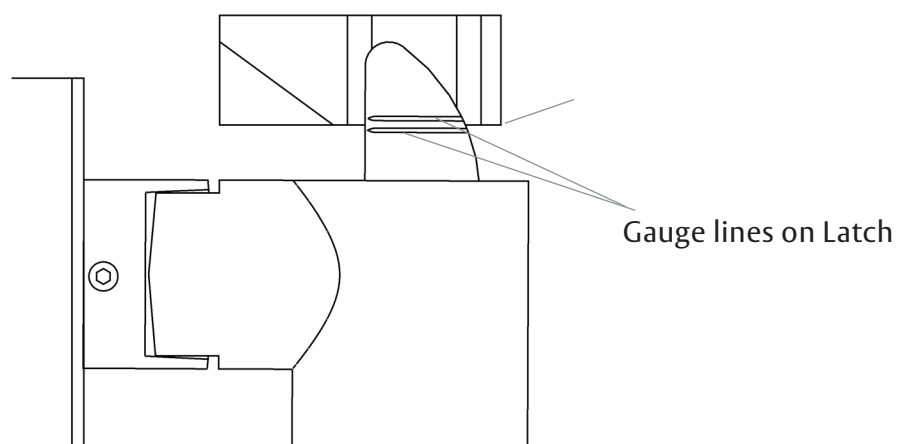


Figure 5-7

ASSA ABLOY

6. Cleaning and Maintenance

6.1 General Maintenance Instructions

- Periodically check the fasteners. The fasteners must not be loose. If the fasteners are loose, reapply threadlocker and tighten as necessary.

6.2 Finish Cleaning Instructions

- **CAUTION:** Before you clean the entire Panic Device Assembly, clean a small test area to make sure that you are satisfied with the results.
- Frequent cleaning extends the life of all finishes.

Finish Code	Finish	Cleaning Instructions
US32	Polished Stainless Steel	Use a soft cloth and a good metal cleaner. We recommend Mr. Metal by S.C. Johnson Company.
US32D	Satin Stainless Steel	Use a soft cloth and a good metal cleaner. We recommend Mr. Metal by S.C. Johnson Company.
US32DMS	Satin MicroShield Coated	Use a soft cloth and mild soap and water. Never use brass polish or an abrasive cleaner unless you intend to remove all clear coat and totally refinish the product.
US32MS	Polished MicroShield Coated	Use a soft cloth and mild soap and water. Never use brass polish or an abrasive cleaner unless you intend to remove all clear coat and totally refinish the product.
10BE	Oxidized & Oiled Bronze Powder Coat Equivalent	Use a soft cloth and mild soap and water. Never use brass polish or an abrasive cleaner unless you intend to remove all clear coat and totally refinish the product.
RPC	Red Powder Coat	Use a soft cloth and mild soap and water. Never use brass polish or an abrasive cleaner unless you intend to remove all clear coat and totally refinish the product.
WPC	White Powder Coat	Use a soft cloth and mild soap and water. Never use brass polish or an abrasive cleaner unless you intend to remove all clear coat and totally refinish the product.
BPC	Black Powder Coat	Use a soft cloth and mild soap and water. Never use brass polish or an abrasive cleaner unless you intend to remove all clear coat and totally refinish the product.
FBPC	Flat Black Powder Coat	Use a soft cloth and mild soap and water. Never use brass polish or an abrasive cleaner unless you intend to remove all clear coat and totally refinish the product.
CUSTOM PC	Custom Powder Coat	Use a soft cloth and mild soap and water. Never use brass polish or an abrasive cleaner unless you intend to remove all clear coat and totally refinish the product.
314E	Powder Coat Equivalent of 314 Extra Dark Bronze Anodized	Use a soft cloth and mild soap and water. Never use brass polish or an abrasive cleaner unless you intend to remove all clear coat and totally refinish the product.

ASSA ABLOY

6.3 Mechanical Maintenance

- **CAUTION:** Make sure the following maintenance steps are completed before operating the Panic Device.
- Refer to the appropriate sections of this Panic Device manual for Threadlocker and Lube applications and their locations.

Threadlocker is applied to the following parts

Part Description	Configuration
2x SHCS (5/16"-18) for Adaptor Block	Glass with Rails
FHSCS (5/16"-18) for Interior Mounting Bracket	All Glass
Set Screw Pins (1/4"-20)	All
2x Cup Point Set Screw (1/4"-20 x 5/16") for Post Base Section	All
Deco End Cap (threads)	All
FHSCS (1/4"-20) for Actuator Post	All
FHSCS (6-32) for Latch Assembly	All
2x SHCS (5/16"-18) for Manual Strike	All Single Manual Strike
3x SHCS (5/16"-18) for Double Manual Strike	All Double Manual Strike
2x SHCS (5/16"-18) for Electric Strike	All Single Electric Strike
4x SHCS (5/16"-18) for Double Electric Strike	All Double Electric Strike

Lubricant is applied to the following parts

Part Description	Configuration
Post Base Section	All
Interior Pivot Bracket	Glass with Rails
Interior Mounting Bracket	All Glass

ASSA ABLOY

Torque Values for different Thread Types

Thread Type	Torque Requirement - in-lbs (N-m)
6-32	9.6 in-lb (1 N-m)
8-32	19.8 in-lb (2.5 N-m)
12-24	55 in-lb (6 N-m)
1/4-20	75.2 in-lb (9 N-m)
5/16-18	132 in-lb (16 N-m)

ASSA ABLOY

ASSA ABLOY is the global
leader in door opening solutions,
dedicated to satisfying
end-user needs for security
safety and convenience

ASSA ABLOY

www.assaabloyglass.com

USA:
ASSA ABLOY Glass Solutions
Rockwood, PA 15557
Phone: 855.594.6989

Canada:
ASSA ABLOY Door Security Solutions
Vaughan, ON L4K 4T9
Phone: 800.461.3007