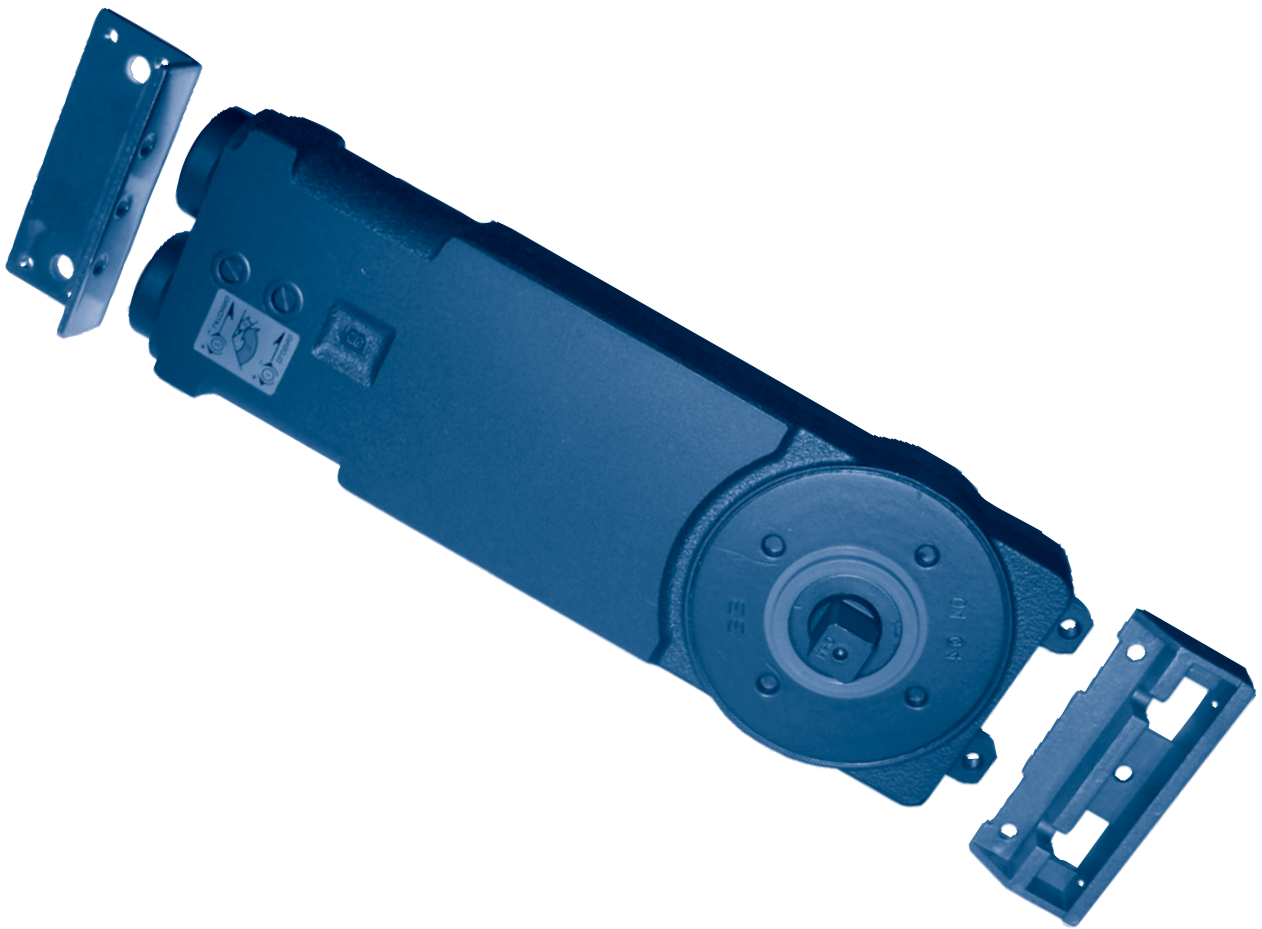


DOREX 30 SERIES

CONCEALED OVERHEAD TRANSOM DOOR CLOSER

DOREX

The Dorex 30 series concealed overhead transom door closer is recommended by door hardware specialists for use on a wide variety of institutional and commercial applications with moderate traffic areas, where door pivoting and control must be provided in a compact and concealed design. Recognized for its strength, value and lasting performance.



- Non-handed
- Universal single or double acting, center hung
- Suitable for wood, metal or aluminium doors over 1 3/4" (44.5mm) thick
- Compact body size fits into 1-3/4" (44.5mm) x 3 3/4" (95mm) header sections
- Light, regular and heavy duty models available
- 90° or 105° door opening
- Mechanical Hold-Open 90° or 105°
- Adjustable closing and latching speed control
- High grade cast steel body
- Supplied with "S" type side loading arm and anchor set. "A" type end loading arm available
- Standard floor mounted pivot set with vertical adjustment for proper door clearance and also suitable for installation using threshold
- ANSI GRADE 1
- Jackson compatible / interchangeable
- 5 year warranty

01.052

DOREX 30 SERIES DOOR CLOSER

CONCEALED OVERHEAD TRANSOM DOOR CLOSER

SPECIFICATION

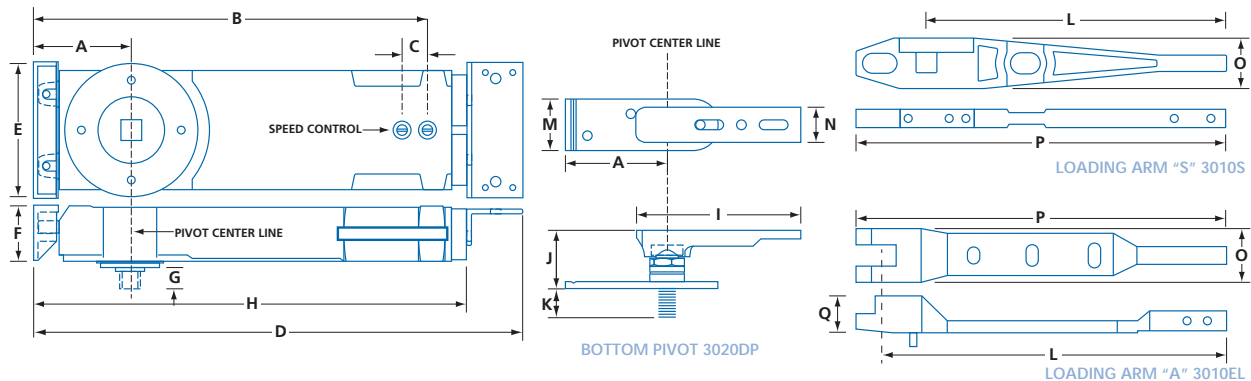
Concealed overhead transom door closers shall be ANSI GRADE 1 Dorex 30 series. Door closer shall have robust steel cast body, with rust-resistant paint and with smooth hydraulic rack and pinion mechanism. Closer shall be non-handed, single or double acting, suitable for a concealed installation on wood, metal or aluminium doors over 1 3/4" (44.5 mm) thick for interior and exterior applications. Closer shall have two non-critical thermostatic valves to control sweep and latch speeds. Hydraulic fluid shall be non-gumming and non freezing. Model 30 comes with a standard "S" Type side loading arm. Model #31 comes with a longer shaft and "A" Type end loading arm for a 1" (25.4mm) deep door top rail cutout. Closer shall be supplied with all necessary mounting hardware.

SELECTION GUIDE

MODEL NUMBER	DESCRIPTION	OPTION	MAXIMUM DOOR SIZE	MAXIMUM DOOR WEIGHT LBS / KG	OPENING FORCE LBS / KG	CLOSING FORCE LBS / KG	PER CASE	WEIGHT LBS / KG
30 LD 90	Light duty, 90° opening	NHO	30 x 96 (762 X 2438)	125 / 57	7.0 / 3.2	3.6 / 1.6	6	72.6 / 33.0
30 LD 105	Light duty, 105° opening							
30 / 31 RD 90	Regular duty, 90° opening	HO, NHO	42 x 96 (1067 X 2438)		9.2 / 4.2	5.0 / 2.3		
30 / 31 RD 105	Regular duty, 105° opening							
30 HD 90	Heavy duty, 90° opening	HO, NHO	48 x 96 (1219 X 2438))		12.2 / 5.5	7.0 / 3.2		
30 HD 105	Heavy duty, 105° opening							
31 HD 105	Heavy-duty, 105° opening	NHO						

* For heavier doors consult your door hardware supplier

SIZE CHART



MODEL NUMBER	A	B	C	D	E	F	G	H	I	J	K	L	M	N	O	P	Q
30	2 3/4 (70)	10 3/4 (273)	11/16 (17.5)	13 1/4 (337)	3 11/16 (94)	1 1/2 (38)	9/16 (14.3)	11 5/8 (295)	4 7/16 (113)	1-1/2 to 2-1/4 (38 to 57)	0 to 3/4 (0 to 19)	8 1/16 (205)	1 3/8 (35)	31/32 (24)	1 3/8 (35)	10 (254)	17/32 (13)
31							3/4 (19)					8 11/16 (220)				9-7/16 (240)	1 (25.4)

PARTS & ACCESSORIES

3010S Type "S" side loading arm assembly
 3010EL Type "A" end loading arm for 1" (25.4mm) deep web
 3010FS Anchor set ("D" clip pack)

3010OC Offset arm and channel
 3020DP Bottom pivot set (125 lbs / 56.8 kg max.)

3010S



Included with 30 Model

3010EL "A"



Included with 31 Model

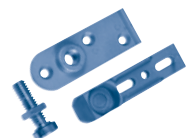
3010FS



3010OC



3020DP



HO – Hold open NHO – No hold open N/A – Not applicable
 LD – Light Duty HD – Heavy Duty RD – Regular Duty

Dimensions unless specified otherwise are: Inches (Millimeters)