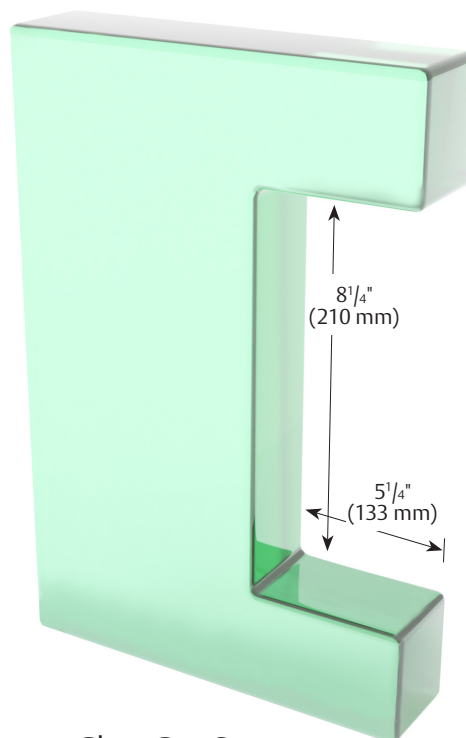


# Center Lock Housings (continued)

## Center Patch Keeper (CLK)

- Opposite center lock patch on sidelite and double door applications
- Holds strike plate for 8800 mortise lock
- 6"W x 10"H
- Available for 1/2" thick glass
- Glass cut-out required
- No cement or silicone required for installation
- 2-year warranty
- Finishes: US14/618, US15/619, 314E



Glass Cut-Out  
Required

**ASSA ABLOY**

The global leader in  
door opening solutions

# Dead Bolts

## Dead Bolt Lock (PF-DBLOCK)

- $2\frac{5}{8}"$  W x 6" H
- Available for  $\frac{1}{2}"$  or  $\frac{3}{8}"$  thick glass
- Glass cut-out required
- No cement or silicone required for installation
- 2-year warranty
- Finishes: US32D/630, US32/629, US28/628, 314



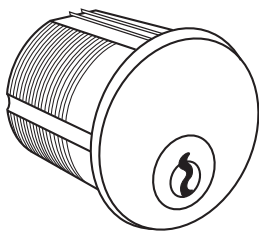
## Dead Bolt Strike (PF-DBSTRIKE)

- $2\frac{5}{8}"$  W x 6" H
- Available for  $\frac{1}{2}"$  or  $\frac{3}{8}"$  thick glass
- Glass cut-out required
- No cement or silicone required for installation
- 2-year warranty
- Finishes: US32D/630, US32/629, US28/628, 314

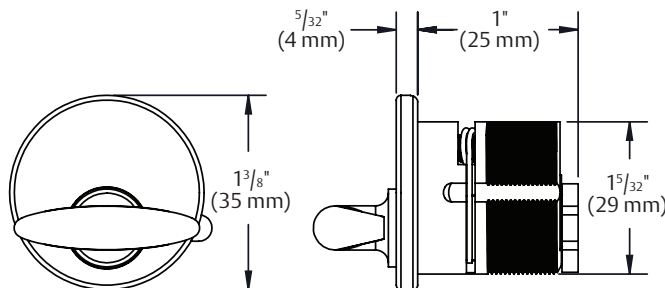


## Dead Bolt Lock Cylinder and Thumbturn

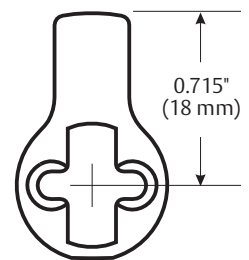
1" Cylinder (PFD-LOCKCYL)



1" Thumbturn (PFD-LOCKTT)



Cylinder Cam



**ASSA ABLOY**

The global leader in  
door opening solutions

# Electrified Hardware

ADAMS RITE and SECURITRON® lead the industry with their electrified hardware products. Whether you choose a Magnalock®, wireless reader, or touch lock, you get quality solutions for high traffic and high security applications.



**ASSA ABLOY**



# SECURITRON® M32 Series Magnalock®

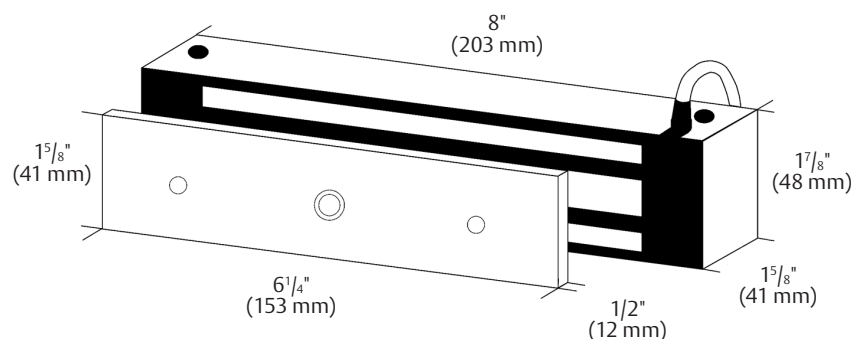
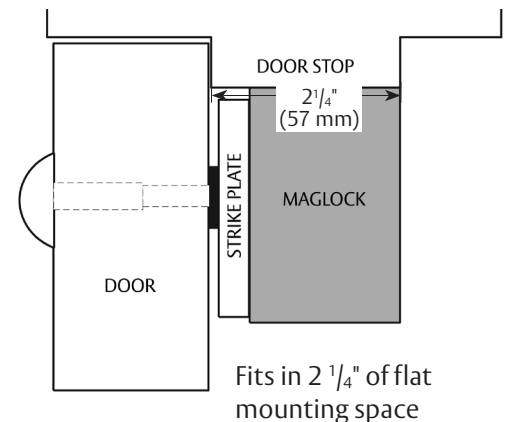
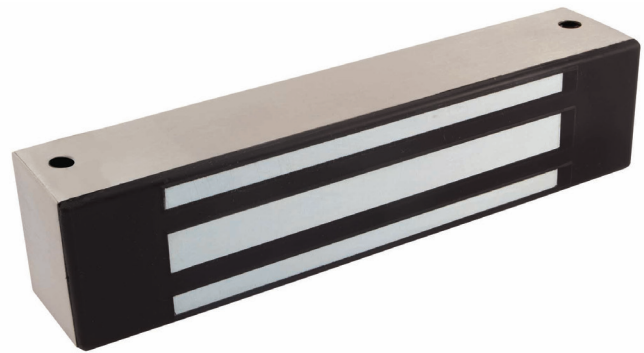
The M32 electromagnetic lock is ideal for traffic control in high-use areas within secured or monitored perimeters. With unsurpassed durability, the M32 will last long after most buildings wear out. Applications for when reliability, high durability, and low-maintenance are required.

## Product Features

- Ultra-secure collapsing blind nuts mount to the door frame for strength and reliability
- Fully sealed for weather-proof operations
- 10 ft (3 m) of jacketed, stranded conductor cable
- Automatic dual-voltage - no field adjustment required
- Instant release circuit - no residual magnetism
- Noise suppression with included MOV
- Efficient, low-power usage
- Rust resistant - all ferrous metal surfaces plated for durability
- MagnaCare® lifetime replacement no fault warranty

## Specifications

<b>Holding Force:</b>	600 lbs. (272 kg)
<b>Electrical:</b>	300 mA at 12 VDC; 150 mA at 24 VDC
<b>Operating Temperature:</b>	-40° F to +140° F (-40° C to +60° C); indoor or outdoor use
<b>Base Material:</b>	Stainless steel
<b>Dimensions:</b>	<ul style="list-style-type: none"> <li>• Magnaloc: 8" L x 1<sup>5</sup>/<sub>8</sub>" D x 1<sup>7</sup>/<sub>8</sub>" H</li> <li>• Strike: 6<sup>1</sup>/<sub>4</sub>" L x 1<sup>1</sup>/<sub>2</sub>" D x 1<sup>5</sup>/<sub>8</sub>" H</li> </ul>
<b>Finishes:</b>	US32D/630
<b>Patents, Approvals, Listings:</b>	<ul style="list-style-type: none"> <li>• UL 10C Listed</li> <li>• CAN4-S104, CAN/ULC-S533 Listed</li> <li>• ANSI/UL294 Listed</li> <li>• CSA-C22.2 No.205 Listed</li> <li>• ANSI/BHMA A156.23, Grade 1; E08501-500</li> <li>• CSFM-California State Fire Marshal Approved</li> <li>• MEA - City of New York Approved</li> <li>• CE: EN 50081-1(92), EN 61000-6-2(99) Approved</li> <li>• Patent: 8,094,017</li> </ul>
<b>Options:</b>	<ul style="list-style-type: none"> <li>• (B) BondSTAT magnetic bond sensor (MBS); patented</li> <li>• (D) Integrated door-position switch (DPS)</li> </ul>
<b>Part Number:</b>	MAG-M32BD



## ASSA ABLOY

The global leader in  
door opening solutions



# SECURITRON® M32-SS Split Strike Series Magnalock®

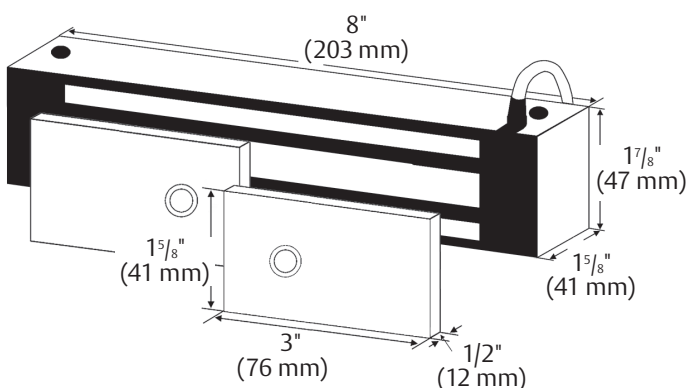
Now you can add asset control to your existing access control system with the durable, power-efficient M32-SS. Each strike plate of the M32-SS delivers 300 lbs. of holding force (600 lbs. total). Ideal for securing swinging doors that share a common center latching point.

## Product Features

- Direct mount with common tools for strength and reliability
- Fully sealed for weather-proof operations
- 10 ft (3 m) of jacketed, stranded conductor cable
- Noise suppression with included MOV
- Automatic dual voltage; no field adjustment required
- Instant release circuit; no residual magnetism
- Efficient, low-power usage
- Rust-resistant; all ferrous metal surfaces plated for durability
- MagnaCare® lifetime replacement no-fault warranty

## Specifications

<b>Holding Force:</b>	600 lbs. (272 kg) 300 lbs. (136 kg) per strike
<b>Electrical:</b>	300 mA at 12 VDC; 150 mA at 24 VDC
<b>Operating Temperature:</b>	-40° F to +140° F (-40° C to +60° C), indoor or outdoor use
<b>Base Material:</b>	Stainless steel
<b>Dimensions:</b>	<ul style="list-style-type: none"> <li>• Magnalock: 8" L x 1<sup>5</sup>/<sub>8</sub>" D x 1<sup>7</sup>/<sub>8</sub>" H</li> <li>• Strike: 3" L x 1<sup>1</sup>/<sub>2</sub>" D x 1<sup>5</sup>/<sub>8</sub>" H each</li> </ul>
<b>Finishes:</b>	US32D/630
<b>Patents, Approvals, Listings:</b>	<ul style="list-style-type: none"> <li>• Underwriters Laboratories (US and Canada): Files SA6635, BP7041 and R13976</li> <li>• UL 10B and UL 10C, UL 294</li> <li>• California State Fire Marshal: 3774-0923:101</li> <li>• City of New York MEA: 251-95E and 254-95E</li> <li>• CE: EN 50081-1 (92) and EN 61000-6-2 (99)</li> <li>• Patent: 8,094,017</li> </ul>
<b>Options:</b>	(B) BondSTAT magnetic bond sensor (MBS); patented
<b>Part Number:</b>	MAG-M32B-SS



**ASSA ABLOY**

The global leader in  
door opening solutions

# SECURITRON® M370 Series Magnalock®

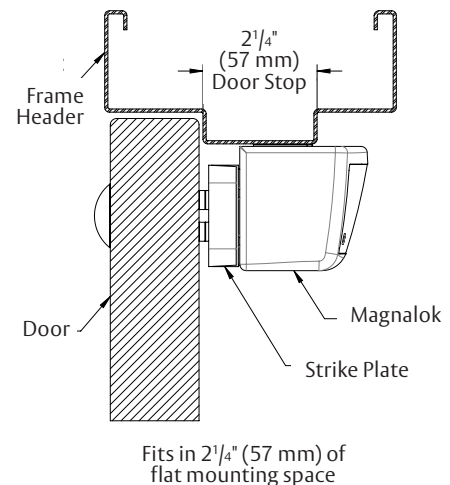
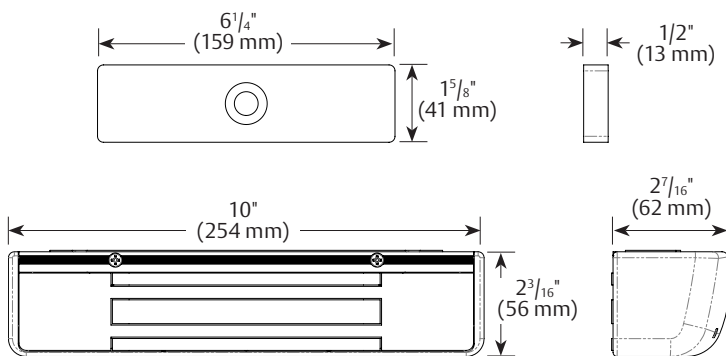
The M370 provides a strong hold, with a look refined enough for the most discriminating designer openings. With independently certified strength, ease of installation, and Magnalock® quality, the M370 delivers peace of mind in a stylish package.

## Product Features

- Bracket mounting provides the easiest install for outswing doors
- Innovative install template for effortlessly accurate alignment between magnet and armature plate
- Sleek, low profile and refined lines for improved aesthetics
- LED visual locked status with configurable red/green color output
- Autosensing dual voltage with microprocessor technology
- Wire chamber with anti-tamper switch
- Efficient, low-power usage
- Size optimized for use with door closers
- MagnaCare® lifetime replacement no-fault warranty

## Specifications

<b>Holding Force:</b>	600 lbs. (272 kg)
<b>Electrical:</b>	510 mA at 12 VDC; 270 mA at 24 VDC
<b>Operating Temperature:</b>	+32° F to +110° F (0° C to +43° C); indoor use only
<b>Base Material:</b>	<ul style="list-style-type: none"> <li>• Enclosure: plated zinc</li> <li>• Strike: stainless steel</li> </ul>
<b>Dimensions:</b>	<ul style="list-style-type: none"> <li>• Magnalock: 10" L x 2<sup>7</sup>/<sub>16</sub>" D x 2<sup>3</sup>/<sub>16</sub>" H</li> <li>• Strike: 6<sup>1</sup>/<sub>4</sub>" L x 1<sup>1</sup>/<sub>2</sub>" D x 1<sup>5</sup>/<sub>8</sub>" H</li> </ul>
<b>Finishes:</b>	US28/628, US20A/313, US19/335,
<b>Patents, Approvals, Listings:</b>	<ul style="list-style-type: none"> <li>• UL 10C Listed</li> <li>• UL 1034 Listed</li> <li>• CAN4-S104, CAN/ULC Listed</li> <li>• ANSI/BHMA A156.23, Grade 1; E18501-500, E18531-500</li> <li>• CSFM - California State Fire Marshal Approved</li> <li>• Patent Pending</li> </ul>
<b>Part Number:</b>	MAG-M370



## ASSA ABLOY

The global leader in  
door opening solutions

# SECURITRON® M670 Series Magnalock®

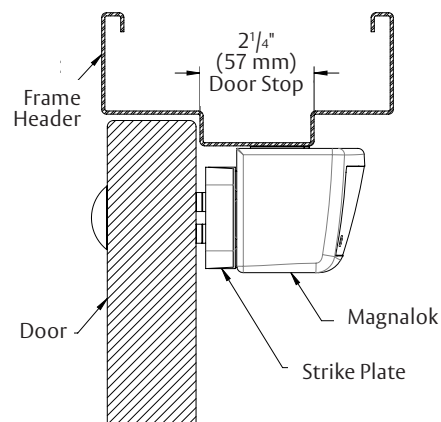
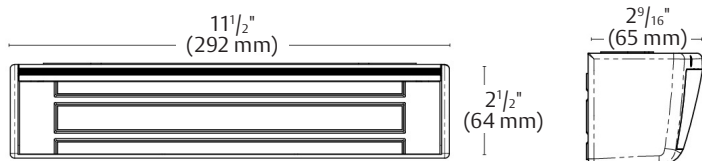
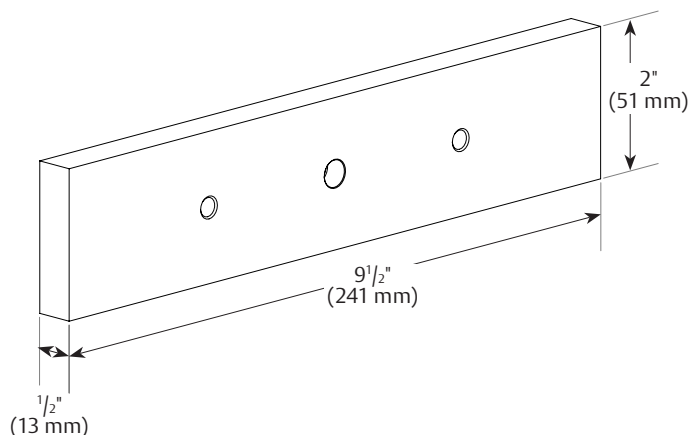
The M670 from Securitron® delivers ease of installation with unsurpassed style. The M670 offers streamlined features and the fastest, easiest, most secure installation of any bracket mount mag lock.

## Product Features

- Bracket mounting provides the easiest install for out-swing doors
- Innovative templating for an effortlessly accurate alignment between magnet and armature plate
- Sleek, low profile and refined lines for improved aesthetics
- LED shows red or green for lock status indication
- Autosensing dual voltage with microprocessor technology
- Wire chamber anti-tamper switch
- Efficient, low-power usage
- Size optimized for use with door closers
- MagnaCare® lifetime replacement no-fault warranty

## Specifications

<b>Holding Force:</b>	1,100 lbs. (499 kg)
<b>Electrical:</b>	575 mA (±10%) at 12 VDC; 275 mA (±10%) at 24 VDC
<b>Operating Temperature:</b>	+32° F to +110° F (0° C to +43° C); indoor use only
<b>Base Material:</b>	<ul style="list-style-type: none"> <li>• Enclosure: plated zinc</li> <li>• Strike: stainless steel</li> </ul>
<b>Dimensions:</b>	<ul style="list-style-type: none"> <li>• Magnalock: 11½" L x 2⅞" D x 2½" H</li> <li>• Strike: 9½" L x 1½" D x 2" H</li> </ul>
<b>Finishes:</b>	US28/628, US20A/313, US19/335
<b>Patents, Approvals, Listings:</b>	<ul style="list-style-type: none"> <li>• UL 1034 Burglary-Resistant Listed</li> <li>• UL 10C Listed</li> <li>• CAN4-S104, CAN/ULC Listed</li> <li>• UL 294 Recognized Component</li> <li>• ANSI/BHMA A156.23, Grade 1; E18501-1000</li> <li>• CSFM- California State Fire Marshal Listed</li> <li>• Patents: D682,655; D690,576</li> <li>• Patent Pending</li> </ul>
<b>Part Number:</b>	MAG-M670



Fits in 2¼" (57 mm) of flat mounting space

## ASSA ABLOY

The global leader in door opening solutions



# SECURITRON® M380 Series Magnalock®

The M380BDX provides strong hold, in a stylish way. With unsurpassed intelligence, an integrated optional REX, and incredible ease of installation, it sets a new standard for mag locks. It offers a built in, auto voltage-sensing microprocessor along with Securitron's patented BondSTAT® and door position monitoring, plus advanced options such as REX for the most functional mag lock ever. The M380BDX look is refined enough for the most discriminating designer openings with consolidated features that eliminate the clutter of multiple devices around the door and the fastest, easiest, and most secure installation of any bracket mount mag lock.

## Product Features

- Bracket mounting provides the easiest install for outswing doors
- Innovative install template for effortlessly accurate alignment between magnet and armature plate
- Sleek, low profile and refined lines for improved aesthetics
- LED visual locked status with configurable red/green color output
- Autosensing dual voltage with microprocessor technology
- Wire chamber with anti-tamper switch
- Efficient, low-power usage
- Size optimized for use with door closers
- MagnaCare® lifetime replacement no-fault warranty
- Adjustable passive infrared (PIR) request to exit (REX)
  - Automatically cuts power to M380 for egress
  - REX output
  - Easily adjustable beam pattern
  - Adjustable relock timer technology

## Specifications

- Holding Force:** 600 lbs. (272 kg)
- Electrical:**
- Magnalock power: 510 mA at 12 VDC; 270 mA at 24 VDC
  - PIR power: 25 mA at 12 VDC; 10 mA at 24 VDC

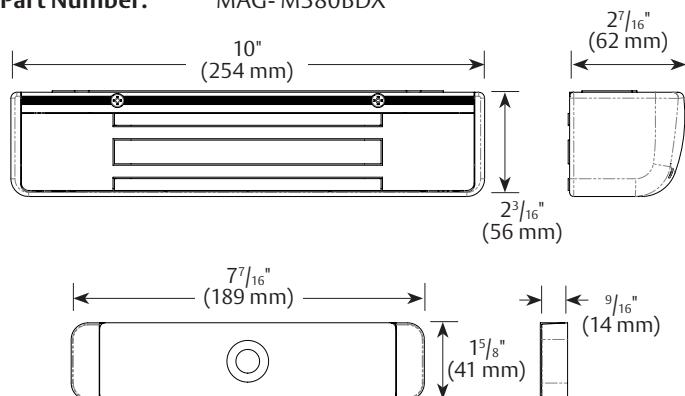
- Operating Temperature:** +32° F to +110° F (0° C to +43 °C); indoor use only

- Dimensions:**
- Magnalock: 10" L x 2<sup>7</sup>/<sub>16</sub>" D x 2<sup>3</sup>/<sub>16</sub>" H
  - Strike: 7<sup>7</sup>/<sub>16</sub>" L x 9<sup>9</sup>/<sub>16</sub>" D x 1<sup>5</sup>/<sub>8</sub>" H

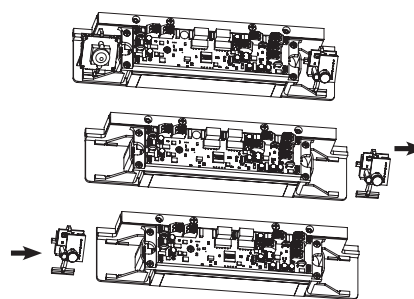
- Finishes:** US28/628, US20A/313, US19/335

- Patents, Approvals, Listings:**
- UL 10C Listed
  - UL 1034 Burglary-Resistant Listed
  - CAN4-S104, CAN/ULC Listed
  - ANSI/BHMA A156.23, Grade 1; E18501-500, E18531-500
  - CSFM - California State Fire Marshal Approved
  - Patent: 8,094,017
  - Patent Pending

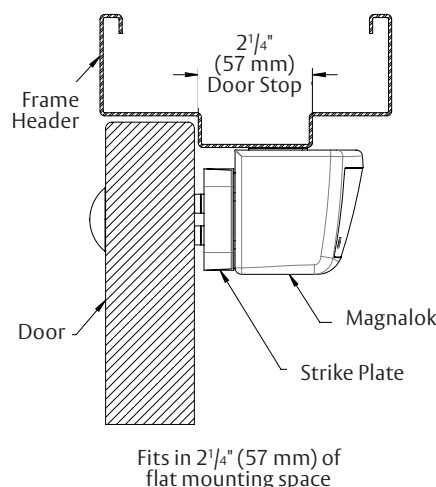
- Part Number:** MAG- M380BDX



The global leader in  
door opening solutions



*The REX is designed as a modular component that can be installed on either the left side or the right side of the magnet. The position of the REX module can be easily field configured for better positioning on the door.*



# SECURITRON® M680 Series Magnalock®

The M680BDX with an integrated request to exit (REX) from Securitron® provides optimum coverage for detecting an approaching person so the door unlocks for egress. The configuration of the passive infrared (PIR) beam allows the detection area to be tailored to your environment for better accuracy. Meet the smart, stylish, and secure mag lock with an integrated, adjustable, passive infrared request to exit.

## Product Features

- Bracket mounting provides the easiest install for out-swing doors
- Innovative install templating for effortlessly accurate alignment between magnet and armature plate
- Sleek, low profile and refined lines for improved aesthetics
- LED visual locked status with configurable red/green color output
- BondSTAT™ lock bond sensor - patented
- Autosensing dual voltage with microprocessor technology
- Integrated door position switch
- Adjustable passive infrared (PIR) request to exit (REX)
  - Automatically cuts power to the M680 for egress
  - REX output
  - Easily adjustable beam pattern
  - Adjustable relock timer
- Wire chamber anti-tamper switch
- Efficient, low-power usage
- Size optimized for use with door closers
- MagnaCare® lifetime replacement no-fault warranty

## Specifications

**Holding Force:** 1,100 lbs. (499 kg)

**Electrical:** Magnalock power

- 550 mA (±10%) at 12 VDC;
- 300 mA (±10%) at 24 VDC

REX power\*

- 225 mA (±10%) at 12 VDC;
- 90 mA (±10%) at 24 VDC

**Operating Temperature:** +32° F to +110° F (0° C to +43° C); indoor use only

**Base Material:** Enclosure: plated zinc  
Strike: stainless steel

**Dimensions:**

- Magnalock: 11<sup>1</sup>/<sub>2</sub>" L x 2<sup>9</sup>/<sub>16</sub>" D x 2<sup>1</sup>/<sub>2</sub>" H
- Strike: 10<sup>7</sup>/<sub>8</sub>" L x 2<sup>9</sup>/<sub>16</sub>" D x 2" H

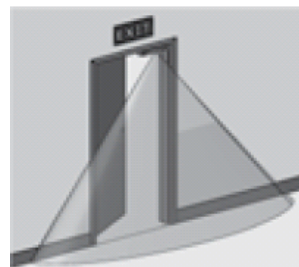
**Finishes:** US28/628, US20A/313, US19/335

**Patents, Approvals, Listings:**

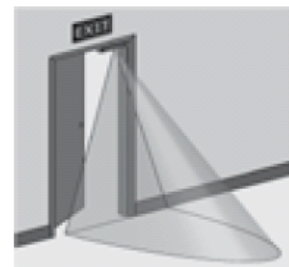
- UL 1034 Burglary-Resistant Listed
- UL 10C Listed
- CAN4-S104, CAN/ULC Listed
- UL 294 Recognized Component
- ANSI/BHMA A156.23, Grade 1; E18501-1000
- CSFM - California State Fire Marshal Listed
- Patents: D682,655; D690, 576; 8,094,017
- Patent Pending

**Part Number:** MAG-M680BDX

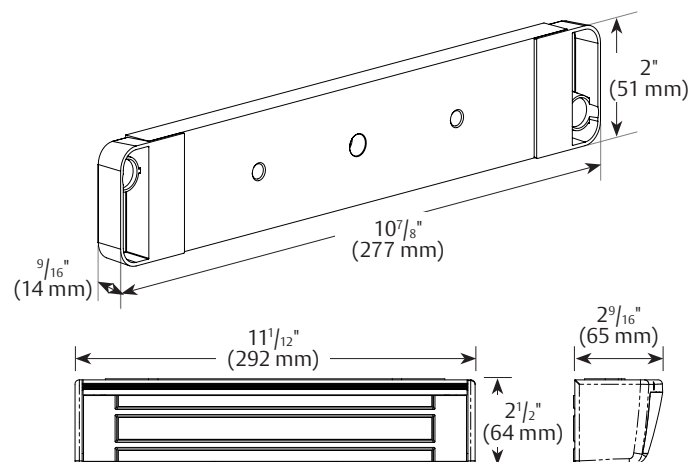
\* A separate continuous power input is required to power the REX.



REX shown adjusted for hallways



REX shown adjusted for door approach



# SECURITRON® Vista V2M600 Series Mag Lock

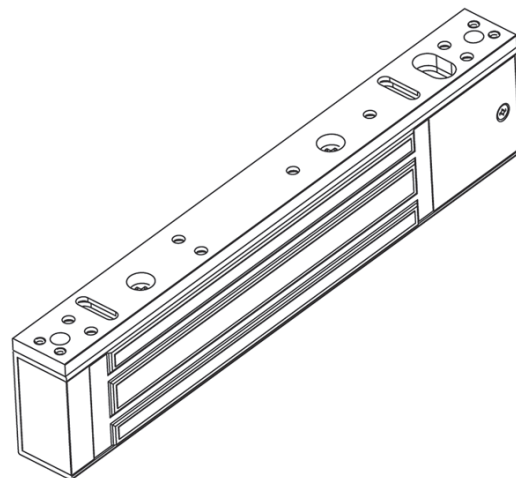
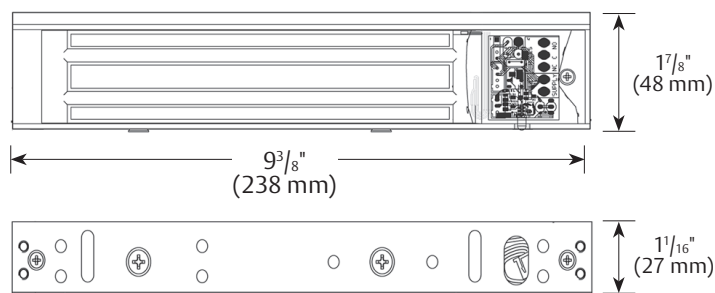
The affordable V2M600 offers traffic control for a wide selection of interior applications. Its field-selectable dual voltage and easy bracket-mount installation delivers Securitron® quality in a no-frills value package.

## Product Features

- Adjustable bracket for easy installation
- Wire access chamber with plug-in connectors
- Dual-voltage; 12/24 VDC
- Instant release mechanism
- Rust-resistant; all ferrous metal surfaces plated for durability
- VistaCare® one-year, hassle-free, no-fault warranty

## Specifications

<b>Holding Force:</b>	600 lbs. (272 kg)
<b>Electrical:</b>	520 mA at 12 VDC, 260 mA at 24 VDC
<b>Operating Temperature:</b>	+32° F to +110° F (0° C to +43° C); indoor use only
<b>Base Material:</b>	Enclosure: aluminum
<b>Dimensions:</b>	<ul style="list-style-type: none"> <li>• Lock: 9<sup>3</sup>/<sub>8</sub>" L x 1<sup>1</sup>/<sub>16</sub>" D x 1<sup>7</sup>/<sub>8</sub>" H</li> <li>• Strike: 7<sup>1</sup>/<sub>4</sub>" L x 1<sup>1</sup>/<sub>2</sub>" D x 1<sup>1</sup>/<sub>2</sub>" H</li> </ul>
<b>Finishes:</b>	US28/628
<b>Patents, Approvals, Listings:</b>	<ul style="list-style-type: none"> <li>• UL10B</li> <li>• UL 10C Fire Rated, 1 hour</li> <li>• CAN4-S104 Listed</li> <li>• NFPA 101</li> </ul>
<b>Options:</b>	<ul style="list-style-type: none"> <li>• (B) BondSTAT magnetic bond sensor (MBS); patented</li> <li>• (D) Integrated door-position switch (DPS)</li> </ul>
<b>Part Number</b>	MAG-V2M600DB



## ASSA ABLOY

The global leader in  
door opening solutions



# SECURITRON® Vista V2M1200 Series Mag Lock

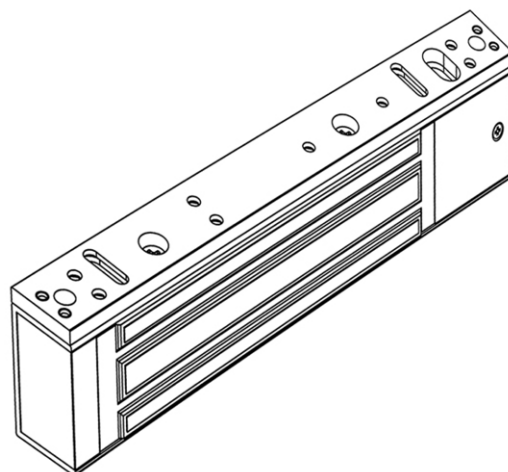
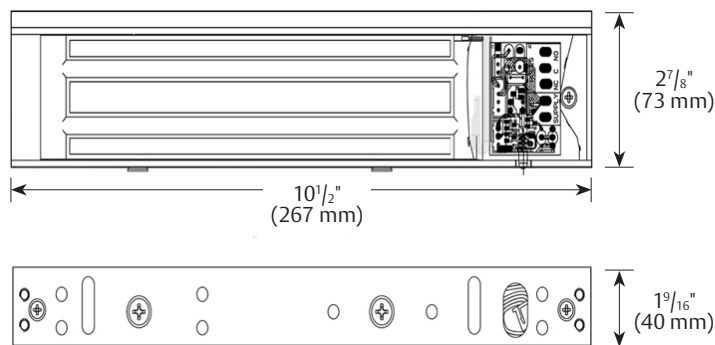
Get Vista Mag Lock value with 1,200 lbs. of holding force to secure interior and sheltered perimeter doors. With built-in arc suppression, the V2M1200 magnetic lock can be used with any access control system.

## Product Features

- Easy-mount adjustable bracket
- Wire access chamber with plug-in connectors
- Dual-voltage 12/24 VDC
- Instant release, no hysteresis
- Non-aluminum parts are plated to resist corrosion
- Self drilling TEC screws
- E-Z mount system, no special tools required
- VistaCare® one-year, hassle-free, no-fault warranty

## Specifications

<b>Holding Force:</b>	1,200 lbs. (544 kg)
<b>Electrical:</b>	520 mA at 12 VDC, 260 mA at 24 VDC
<b>Operating Temperature:</b>	+32° F to +110° F (0° C to +43° C); indoor use only
<b>Base Material</b>	Enclosure: aluminum
<b>Dimensions:</b>	<ul style="list-style-type: none"> <li>• Lock: 10<math>\frac{1}{2}</math>" L x 1<math>\frac{9}{16}</math>" D x 2<math>\frac{7}{8}</math>" H</li> <li>• Strike: 7<math>\frac{5}{8}</math>" L x 5<math>\frac{1}{8}</math>" D x 2<math>\frac{3}{8}</math>" H</li> </ul>
<b>Finishes:</b>	US28/628
<b>Patents, Approvals, Listings:</b>	<ul style="list-style-type: none"> <li>• UL 10C Fire Rated, 1 hour</li> <li>• CAN4-S104 Listed</li> <li>• NFPA 101</li> </ul>
<b>Options:</b>	<ul style="list-style-type: none"> <li>• (B) BondSTAT magnetic bond sensor (MBS); patented</li> <li>• (D) Integrated door-position switch (DPS)</li> </ul>
<b>Part Number:</b>	MAG-V2M1200DB



**ASSA ABLOY**

The global leader in  
door opening solutions

# SECURITRON® SAM Shear Aligning Concealed Magnalock®

This concealed mag lock provides hidden strength at any angle for any application. The SAM Shear Aligning Magnalock® is ideal for traffic control or medium security and with its flexible mounting options, provides a solution for the most challenging door control situations. The SAM Shear Aligning Magnalock has mounting options for a single door or for each leaf on a pair of doors and can be a sliding, in-swing, out-swing, or swing-through door. It mounts fully concealed into Herculite doors in any position: at the header, door edge, or threshold.

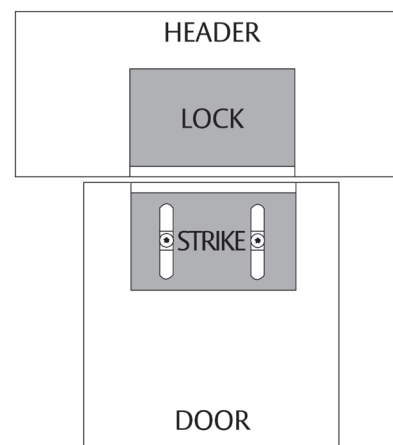
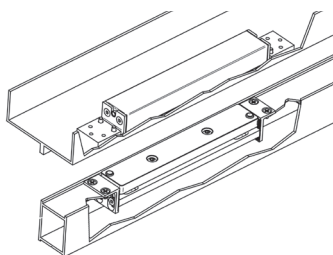
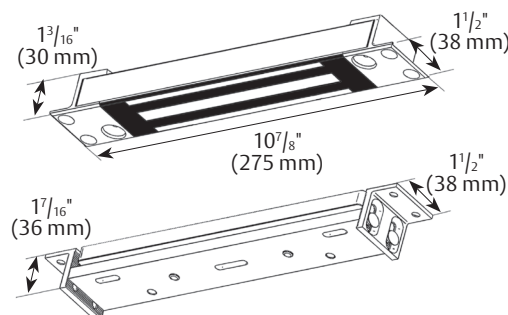
## Product Features

- Recessed for aesthetically appealing finish
- Fully sealed for weather-proof operations
- 10 ft (3.05 m) of jacketed, stranded conductor cable
- Automatic dual-voltage; no field adjustment required
- Instant release circuit; no residual magnetism
- Noise suppression with included MOV
- Efficient, low power usage
- Rust-resistant; all ferrous metal surfaces plated for durability
- MagnaCare® lifetime replacement no-fault warranty

## Specifications

<b>Holding Force:</b>	1,200 lbs. (544 kg)
<b>Electrical:</b>	320 mA at 12 VDC; 170 mA at 24 VDC
<b>Operating Temperature:</b>	-40° F to +140° F (-40° C to +60° C); indoor or outdoor use; not for use in open channel doors
<b>Base Material:</b>	Stainless steel
<b>Dimensions:</b>	<ul style="list-style-type: none"> <li>• Magnalock: 10<sup>7</sup>/<sub>8</sub>" L x 1<sup>3</sup>/<sub>16</sub>" D x 1<sup>1</sup>/<sub>2</sub>" W</li> <li>• Strike: 10<sup>7</sup>/<sub>8</sub>" L x 1<sup>7</sup>/<sub>16</sub>" D x 1<sup>1</sup>/<sub>2</sub>" W</li> </ul>
<b>Finishes:</b>	US32D/630
<b>Patents, Approvals, Listings:</b>	<ul style="list-style-type: none"> <li>• UL 10C Listed</li> <li>• UL/cUL GWXT.R13976 / GWXT7.R13976</li> <li>• UL/cUL FWAX7.SA6635</li> <li>• UL/cUL FWAX2.SA6635 / FWAX8.SA6635</li> <li>• UL/cUL ALVY.BP7041</li> <li>• CSFM - California State Fire Marshal Approved</li> <li>• CSFM 3774-0923:0101</li> <li>• CSFM 3774-0923:0102</li> <li>• CSFM 3774-0923:0103</li> <li>• CAN4-S104, CAN/ULC-S533 Listed</li> <li>• ANSI/UL 294 Listed</li> <li>• ANSI/BHMA A156.23, Grade 1; E08561-1000, E08571-1000, E08581-1000, E08591-1000</li> <li>• CE:EN 50081-1(92), EN 61000-6-2(99) Approved</li> <li>• U.S. Patents: 6,007,119; 6,135,515; BondSTAT</li> <li>• Magnetic Bond Sensor - Patent: 8,094,017</li> <li>• Foreign Patents: AU:741,880; China: ZL98809925.X; EU: 1,021,633</li> </ul>

**Part Number:** MAG-SAM-1224VDC



**ASSA ABLOY**

The global leader in  
door opening solutions

# SECURITRON® SAM2-24 Shear Aligning Concealed Magnalock®

The compact and versatile SAM2-24 Shear Aligning Magnalock provides 600 lbs. of holding force to swinging or sliding doors. It is ideal for traffic control and to secure smaller applications. The SAM2-24 mounts fully concealed into Herculite doors in any position: at the header, door edge, or threshold.

## Product Features

- Direct mount to door frame for strength and reliability
- Compact design fits tight spaces
- Fully sealed for weatherproof operations
- 6 ft (1.8 m) of jacketed, stranded conductor cable
- Noise suppression with included MOVs
- Instant release circuit; no residual magnetism
- Efficient, low-voltage, low power usage
- Rust-resistant; all ferrous metal surfaces plated for durability
- MagnaCare® lifetime replacement no fault warranty

## Specifications

**Holding Force:** 600 lbs. (272 kg)

**Electrical:** 62 mA at 24 VDC only

**Operating Temperature:** -40° F to +140° F (-40° C to +60° C);  
indoor or outdoor use;  
not for use in open channel doors

**Base Material:** Stainless steel

**Dimensions:**

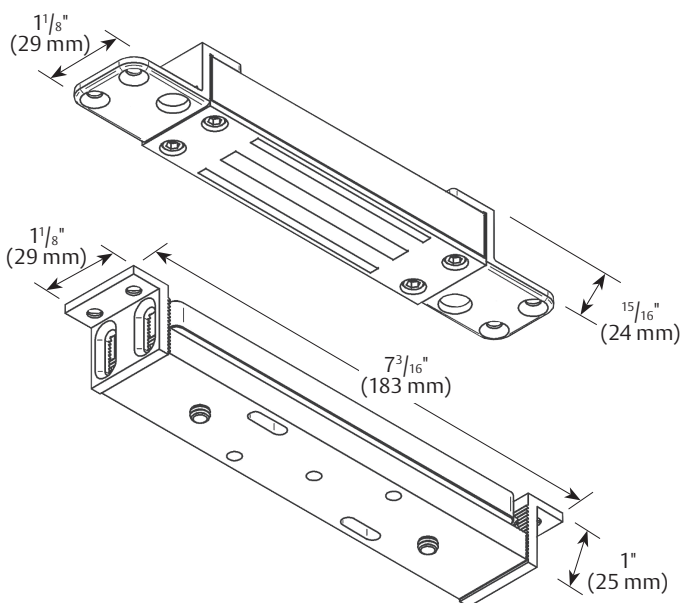
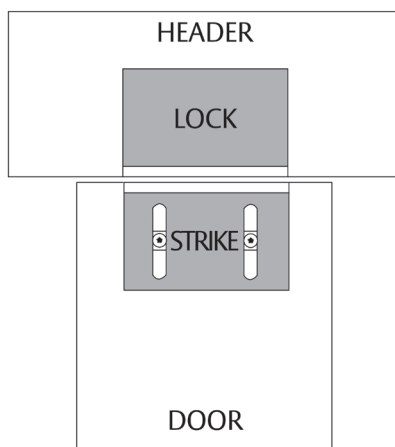
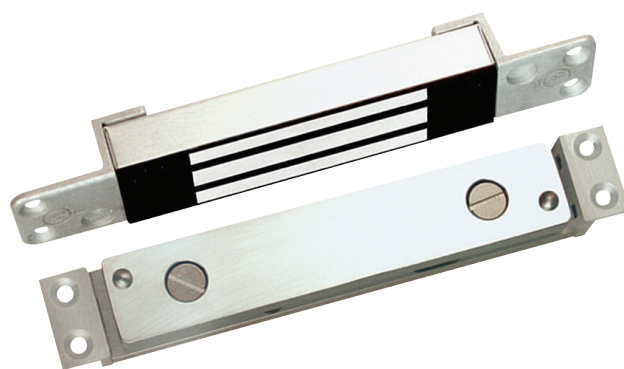
- Magnalock:  $7\frac{3}{16}"$  L x  $\frac{5}{16}"$  D x  $1\frac{1}{8}"$  W
- Strike:  $7\frac{3}{16}"$  L x 1" D x  $1\frac{1}{8}"$  W

**Finishes:** US32D/630

**Patents, Approvals, Listings:**

- UL 10C Listed
- UL/cUL GWXT.R13976 / GWXT7.R13976
- CSFM - California State Fire Marshal Approved
- CSFM 3774-0923:0101
- CAN4-S104, CAN/ ULC-S533 Listed
- ANSI/UL 294 Listed
- ANSI/BHMA A156.23, Grade 1; E08571-1000, E08581-500
- US Patents: 6,007,119; 6,135,515
- Foreign Patents: AU: 741,880; China: ZL98809925.X; EU: 1,021,633

**Part Number:** MAG-SAM2-24VDC



**ASSA ABLOY**

The global leader in  
door opening solutions



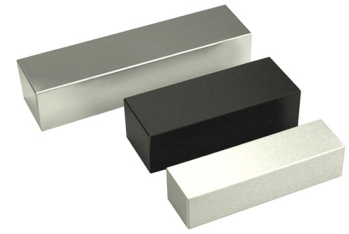
# SECURITRON® Magnalock® Accessories

Securitron® offers a variety of accessories to meet your electromagnetic needs.

## Dress Covers

- Attractive cover for the M32 Series Magnalock
- Install using foam adhesive tape
- Available in clear, black, and polished stainless finishes
- MagnaCare® lifetime replacement, no-fault warranty

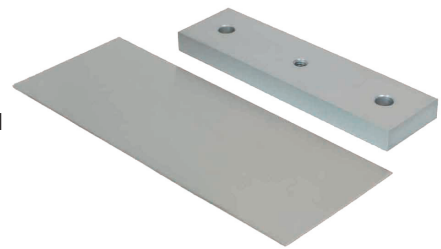
**Base Material:** Stainless steel  
**Dimensions:** 8" L x 2" D x 1<sup>5</sup>/<sub>8</sub>" H  
**Finishes:** US32/629, US28/628, US19/335  
**Part Number:** MAG-DC32



## Glass Door Bracket

- Permits strike plate installation on a solid glass door
- Adhesive mounting requires no drilling
- MagnaCare® lifetime replacement, no-fault warranty

**Base Material:** Aluminum  
**Dimensions:** 6" L x 1<sup>5</sup>/<sub>8</sub>" H  
**Finishes:** US28/628  
**Part Number:** MAG-GDB



## Adhesive Kit for Glass Door Bracket

- Attaches Magnalock brackets to glass header
- Permanently bonds to glass using special industrial adhesive
- MagnaCare® lifetime replacement, no-fault warranty

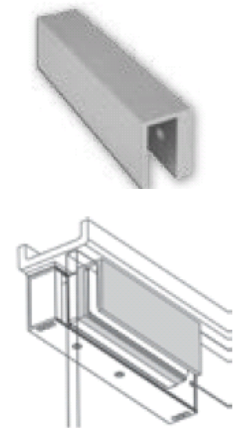
**Brand:** Loctite  
**Part Number:** MAG-AGK



## Glass Door Bracket for Vista Mag Lock

- Permits strike plate installation on a solid glass door
- Adhesive mounting requires no drilling
- Strike plate screws into the bracket, as glass doors cannot be drilled
- VistaCare® one-year, hassle-free, no-fault warranty

**Base Material:** Aluminum  
**Finishes:** CL  
**Part Number:** MAG-GDB-V2M



# ASSA ABLOY

The global leader in  
door opening solutions

# SECURITRON® Magnalock® Accessories (continued)

## Universal Header Bracket

- Used to extend the header 1" or 1½"
- Provides a concealed wiring chamber
- Use with M32, M62, M82, M38, M68, M370, M380, M670, M680
- MagnaCare® lifetime replacement, no fault warranty

**Base Material:** Aluminum

**Finishes:** US28/628, US19/335

**Part Number\*:** MAG-UHB-XX-8  
MAG-UHB-XX-12

*\*List Magnalock® Series in place of XX.*



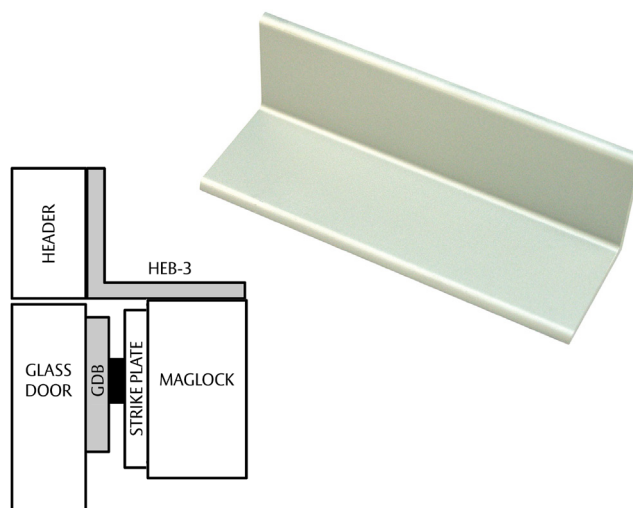
## Header Extension Bracket

- Allows for Magnalock installation on all-glass header when used with the adhesive mounting kit
- Use with M32, M62
- Specially milled back
- MagnaCare® lifetime replacement, no-fault warranty

**Base Material** Aluminum

**Finishes** US28/628, US19/335

**Part Number** MAG-HEB-X-X



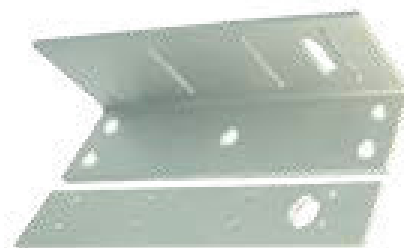
## Header Extension Bracket for Vista Maglock

- 90-degree angle bracket with lateral adjustability
- Extends narrow headers to permit proper mounting of Vista mag locks
- VistaCare® one-year, hassle-free, no-fault warranty

**Base Material:** Aluminum

**Finishes:** US28/628

**Part Number:** MAG-HEB-V2M600  
MAG-HEB-V2M1200



**ASSA ABLOY**

The global leader in  
door opening solutions



**ASSA ABLOY**

The global leader in  
door opening solutions

Copyright © 2017 ASSA ABLOY Inc. All rights reserved. Reproduction in whole  
or in part without the express written permission of ASSA ABLOY Inc. is prohibited.



# ADAMS RITE® Digital Glass Door Lock

The RITE Touch® RT1050D digital door lock provides keyless access control for all-glass openings. The RITE Touch offers sophisticated styling, convenience, flexible access control, and safety and security for single or double glass doors. Perfect for indoor applications, the easy to install, surface-mounted RT1050D combines elegant aesthetics with the latest touch screen technology, to harmonize style and security.

## Operation

The surface-mounted lock features two options for credential actuation on the secure side of the door: either by entering a user code using a touch-screen or by using the provided Mifare credential card. The lock features dual unlock from the inside of the door, either by thumbturn or by using an override button.

## Product Features

- Thin, low profile, surface mounted design
- Easy installation requires no modification to glass
- Sleek touch screen interface
- Compatible with interior single or pairs of doors
- Access control via card reader or keypad
- Card reader supports up to 40 credential cards
- Battery powered with emergency access power capability
- Visible operation status
- Optional automatic locking
- Break-in and damage alarm
- Electronic shock resistant

## Specifications

**Door Thickness:**  $\frac{7}{16}$ " to  $\frac{1}{2}$ " thick glass doors; indoor applications only

**Twin Bolt Dimensions:**  $\frac{13}{32}$ " D with  $\frac{1}{8}$ " throw; bolt extensions included separately for larger door gap; twin bolts included with  $\frac{21}{8}$ " throw

**Operating Temperature:** +5° F to +130° F (-15° C to +55° C)

**Shipping Weight:** 6 lbs. (2.72 kg)

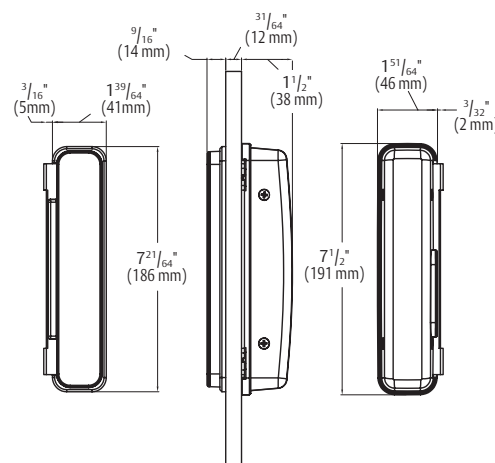
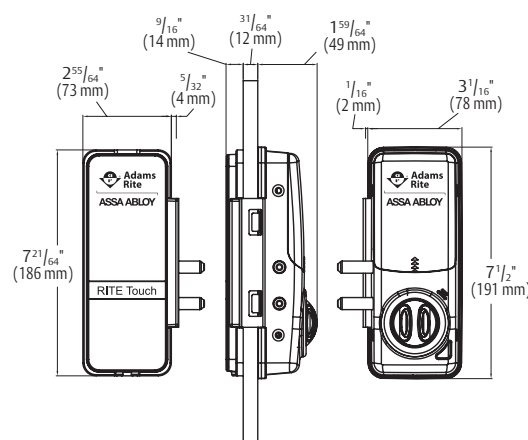
**Base Material:** Front body: plastic  
Back body: zinc, plastic

**Dimensions:** Front body:  $\frac{9}{16}$ " D x  $2\frac{7}{8}$ " W x  $7\frac{5}{16}$ " H  
Back body:  $1\frac{15}{16}$ " D x  $3\frac{1}{16}$ " W x  $7\frac{1}{2}$ " H

**Finishes:** Mirrored black

**Patents, Approvals, Listings:** FCC Part 15 and IC Compliant

**Part Number:** DL-RT1050D



**ASSA ABLOY**

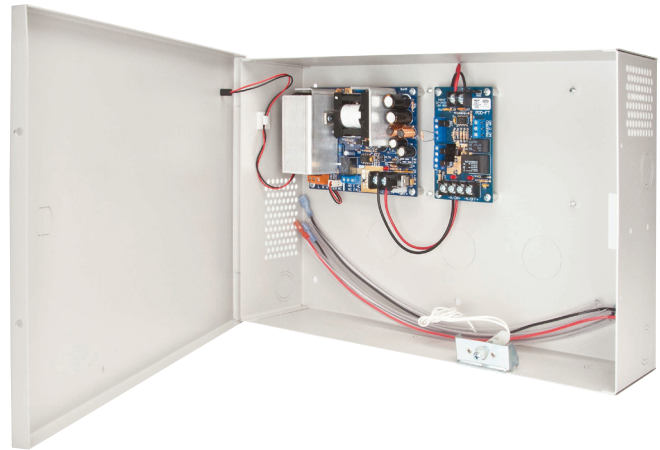
The global leader in  
door opening solutions

# SECURITRON® AccuPower® AQD3 Series

The Securitron® AccuPower® AQD3 Series of switching power supplies are dual-voltage, supervised units with battery charger. These units are field selectable, with a fast battery charge reserve. They provide 3 A at 12 VDC or 1.5 A at 24 VDC continuous, with up to eight (8) independently controlled, power-limited outputs.

## Product Features

- Up to 3 Amp/12 VDC or 1.5 Amp/24 VDC total output. Rated up to 2.8 Amp/1.4 Amp continuous output
- Dual voltage 12 VDC/24 VDC field selectable
- Internal transformer
- Tolerates brownout or overvoltage input from 60-260 VAC
- Thermal shutdown protection with auto restart
- Circuit breaker protects against overcurrent and reverse battery faults
- Battery charger and power supervision
- Low battery disconnect prevents deep discharge
- Dedicated voltage enables faster battery charging even under full load
- MagnaCare® lifetime replacement, no fault warranty



## Specifications

### Electrical

<b>Input Voltage</b>	90 VAC - 240 VAC; 47 Hz - 63 Hz
<b>Operating Range:</b>	
<b>Maximum Output Voltage:</b>	36 VA; 3 A @ 12 VDC; 1.5 A @ 24 VDC
<b>Continuous Output Voltage:</b>	33.5 VA; 2.8 A @ 12 VDC, 1.4 A @ 24 VDC
<b>Voltage Range:</b>	9.8 VDC - 13.7 VDC/13.65 typical 20.0 VDC - 27.5 VDC/27.3 typical
<b>Operating Frequency:</b>	66 Khz
<b>Onboard Power Output:</b>	One class 2 power limited
<b>Fuse Protection:</b>	AC fuse: GMA: 2 2 Amp Battery: PTC 3 Amp Current overload: PTC, self-resetting Thermal runaway: PTC, Self-resetting
<b>Supervision/ Monitoring:</b>	AC ON LED indicator: 6 mA DC ON LED indicator: 6 mA AC fail notification: SPDT form C 2 Amp Low battery: SPDT form C 3 Amp

**Output Terminal Block Rating:** 10 A

**Output Wire Gauge Range:** 14-28 AWG\*

**Maximum Output Per Channel:** 4 channels @ 0.35 channel

### Dimensions

<b>Enclosure:</b>	14" L x 9" W x 3.5" H
<b>Power Board:</b>	3.73" L x 4.84" W x 2" H
<b>Mounting:</b>	3.41" L x 4.5" W
<b>Distribution Board:</b>	3.75" L x 2.22" W x 1" H
<b>Mounting:</b>	3.41" L x 1.87" W
<b>Operating Temperature:</b>	-4° F to +104° F (-20° C to +40° C) (PTC circuit breakers hold current at 130°F)
<b>Base Material:</b>	Enclosure: steel
<b>Finishes:</b>	Powder coat: beige
<b>Patents, Approvals, Listings:</b>	<ul style="list-style-type: none"> <li>• ANSI/UL 294 Listed</li> <li>• ANSI/UL 603 Listed</li> <li>• ULC-S318-96 Listed</li> <li>• RoHS lead free</li> </ul>
<b>Part Number:</b>	PS-AQD3-4C

\*Use gauge appropriate for output voltage and wiring distance.

## ASSA ABLOY

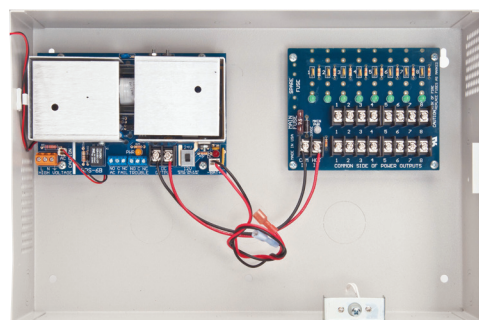
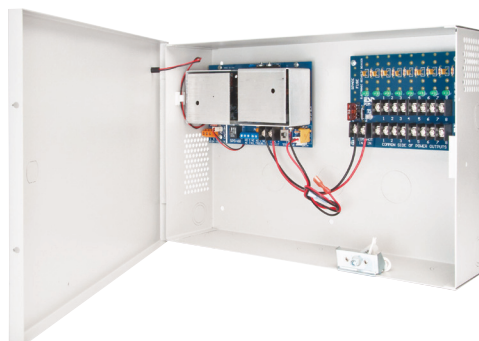
The global leader in  
door opening solutions

# SECURITRON® AccuPower® AQD5 Series

The Securitron® AccuPower® AQD5 Series of switching power supplies are dual-voltage supervised units with a battery charger. These units are field selectable for 5 A at 12 VDC or 3 A at 24 VDC, with up to eight (8) independently controlled, power-limited outputs.

## Product Features

- Dual-voltage 5 A/12 VDC or 3 A/24 VDC field selectable continuous output
- Internal transformer
- Tolerates brownout or overvoltage input from 60-260 VAC
- Thermal shutdown protection with auto restart
- Circuit breaker protects against overcurrent and reverse battery faults
- Battery charger and power supervision
- Low battery disconnect prevents deep discharge
- Dedicated voltage enables faster battery charging even under full load
- MagnaCare® lifetime replacement, no fault warranty



## Specifications

### Electrical

<b>Input Voltage</b>	90 VAC - 240 VAC; 50 Hz - 60 Hz
<b>Operating Range:</b>	
<b>Maximum Output Voltage:</b>	72 VA; 6 A @ 12 VDC; 3 A @ 24 VDC
<b>Continuous Output Voltage:</b>	60 VA; 5 A @ 12 VDC, 3 A @ 24 VDC
<b>Voltage Range:</b>	9.8 VDC - 13.8 VDC/13.65 typical 19.65 VDC - 28 VDC/27.3 typical
<b>Operating Frequency:</b>	132 Khz
<b>Onboard Power Output:</b>	One class 2 power limited
<b>Fuse Protection:</b>	AC fuse: GMA: 2 2 A Battery: PTC 6 A Current overload: PTC, self-resetting Thermal runaway: PTC, Self-resetting
<b>Supervision/ Monitoring:</b>	AC ON LED indicator: 6 mA DC ON LED indicator: 6 mA AC fail notification: SPDT form C 2 A Low battery: SPDT form C 3 A

### Dimensions

<b>Enclosure:</b>	14" L x 9" W x 3 1/2" H
<b>Power Board:</b>	6.05" L x 3.87" W x 2.28" H
<b>Mounting:</b>	4.5" L x 3.41" W
<b>Operating Temperature:</b>	-4° F to +104° F (-20° C to +40° C) Humidity: 95% RH non-condensing
<b>Base Material:</b>	Enclosure: steel
<b>Finishes:</b>	Powder coat: beige
<b>Patents, Approvals, Listings:</b>	<ul style="list-style-type: none"> <li>• ANSI/UL 294 Listed</li> <li>• ANSI/UL 603 Listed</li> <li>• ULCS318-96 Listed</li> <li>• CAN/ULC-S533-02</li> <li>• RoHS lead free</li> </ul>
<b>Part Number:</b>	PS-AQD5-4C

**ASSA ABLOY**

The global leader in  
door opening solutions

# SECURITRON® BPS Series

## 12/24-1 Dual Voltage Boxed Power Supply

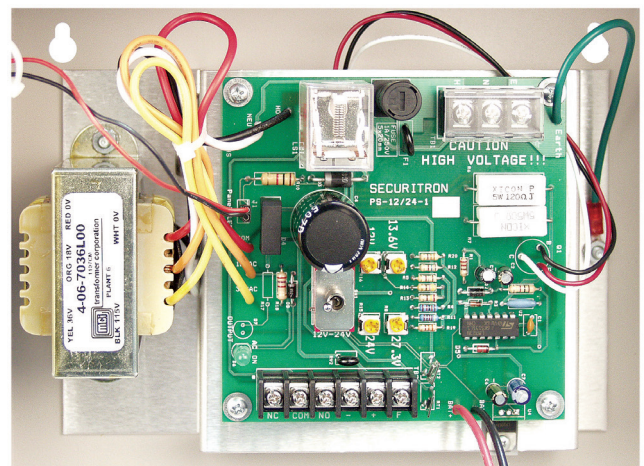
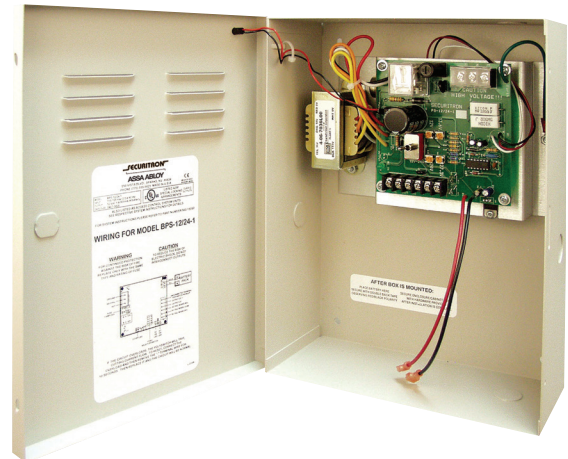
The BPS Series of power supplies delivers linear technology and is recommended for use with the most voltage sensitive electronic safety and security components, including card readers, electric strikes, motion sensors, DC voltage cameras, and as an interface for a fire alarm system or battery backup. The BPS-12/24-1 is UL Class 2 listed, allowing for wire runs without the use of conduit from power supply to door.

### Product Features

- Dual-output, field-selectable 12/24 VDC via clearly marked toggle switch
- Supplies 1 full Amp continuous current output, even while charging back-up batteries
- Linear regulated power supply provides the cleanest power available
- UL Class 2 power-limited output
- SPDT AC monitoring output allows for remote monitoring of the power supply's 110 VAC input
- External LED indicator (AC and DC) easily determines power status
- UL Listed, low-current fire alarm disconnect requires only a minimum size fire alarm relay and wire gauge
- Polyswitch 2 A breaker allows for large short duration inrush current if batteries are installed (approximately 20 A for 1 second)
- Line voltage and DC fuses
- Sealed lead acid or gel battery charging capability (battery sold separately)

### Specifications

<b>Electrical:</b>	<ul style="list-style-type: none"> <li>• Voltage adjustment: 12 V/24 V selector switch</li> <li>• Input voltage: 120 VAC</li> <li>• Output current: 1 Amp</li> </ul>
<b>Operating Temperature:</b>	+32° F to +105° F (0° C to +40° C)
<b>Base Material:</b>	Enclosure: steel
<b>Dimensions:</b>	9" L x 12" H x 4" D enclosure
<b>Finishes:</b>	Powder coat: beige
<b>Patents, Approvals, Listings:</b>	<ul style="list-style-type: none"> <li>• UL FWAX2.SA6635</li> <li>• cUL FWAX8.SA6635</li> <li>• UL/cUL ALVY.BP7041 / UEHX7.BP7041</li> <li>• CSFM 3774-0923:0102</li> <li>• CSFM 3774-0923:0103</li> </ul>
<b>Part Number:</b>	PS-BPS-12/24-1



## ASSA ABLOY

The global leader in  
door opening solutions





**ASSA ABLOY**

The global leader in  
door opening solutions

Copyright © 2017 ASSA ABLOY Inc. All rights reserved. Reproduction in whole or in part without the express written permission of ASSA ABLOY Inc. is prohibited.



## Aperio®

Aperio offers the same real-time communication as traditional access control without the inconvenience of wiring the door. Aperio technology is a global wireless platform that reduces the cost and inconvenience of traditional access control without the hassle of complex site surveys. It utilizes local wireless communication between the lock and a communications hub to connect to an online electronic access control system. This offers facilities an easy, affordable way to expand the reach of existing access control systems and secure additional openings.

**ASSA ABLOY**

The global leader in  
door opening solutions

Copyright © 2017 ASSA ABLOY Inc. All rights reserved. Reproduction in whole or in part without the express written permission of ASSA ABLOY Inc. is prohibited.

# SECURITRON® R100-1H Wireless Reader and Aperio® Hub

The R100-1H surface mounted wireless iCLASS reader and pre-paired Aperio® hub offer an elegant way to extend access control to glass entryways. Installation is easy, requires no drilling or pulling of wires and can adhere in minutes. A complement to an electronic locking solution, glass entryways can now integrate robust access control while maintaining a clean, wireless appearance.

## Product Features

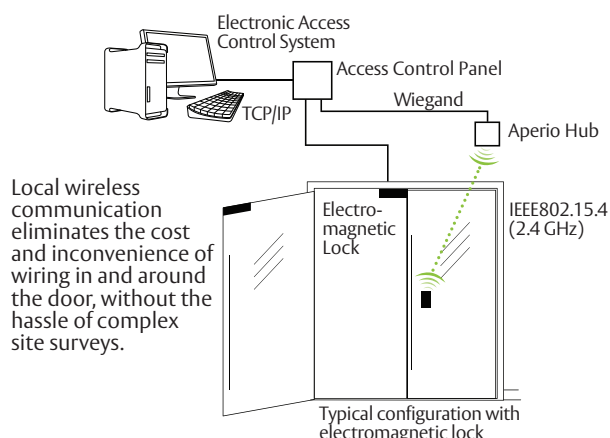
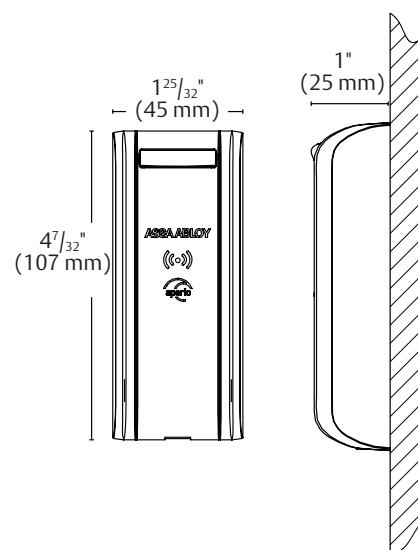
- Adheres to glass surface without any connecting wires
- Shortened wire pull from panel to hub provides cost benefit in installation
- Fully-encrypted AES 128 wireless communication
- Online transaction audit trail capability
- Low-battery signaling and reporting
- Green status LED indicator
- Protected by SecuriCare® three-year, no-fault warranty

## Specifications

<b>Battery:</b>	1 x 3 V CR2 Lithium battery
<b>Operating Temperature:</b>	-40° F to +122° F (-40° C to + 50° C); indoor or outdoor use
<b>Monitoring:</b>	Tamper; low battery
<b>Base Material:</b>	Reader and hub: plastic enclosure
<b>Dimensions:</b>	4.25" L x 1.8" W x 1.0" H
<b>Finishes:</b>	<ul style="list-style-type: none"> <li>• Reader: black</li> <li>• Hub: white</li> </ul>
<b>Patents, Approvals, Listings:</b>	FCC Part 15 and IC Compliant
<b>Accessories</b>	R100 Dress Cover (RD-R100-DCA) <ul style="list-style-type: none"> <li>• Aluminum cover</li> <li>• Attaches to inside of glass, hiding mounting glue</li> <li>• Keeps glass aesthetically pleasing</li> <li>• Mounts with self-adhesive backing</li> <li>• Dimensions: 5" L x 2" W</li> <li>• Finish: US28/628</li> </ul>

## Model Options

- Low frequency model supports PROX and EM PROX (RD-R100-1H-PA)
- High frequency model supports iCLASS®, iCLASS SEOS™, iCLASS SE, ISO14443B UID, Mifare, Mifare Plus, Desfire SE, Desfire EV1, NFC (RD-R100-1H-SE)



**ASSA ABLOY**

The global leader in  
door opening solutions





ASSA ABLOY is the global leader in door opening solutions, dedicated to satisfying end-user needs for security, safety and convenience

**ASSA ABLOY**

ASSA ABLOY Glass Solutions  
300 Main Street  
Rockwood, PA 15557  
[www.assaabloyglass.us](http://www.assaabloyglass.us)

Copyright © 2017 ASSA ABLOY Inc. All rights reserved. Reproduction in whole or in part without the express written permission of ASSA ABLOY Inc. is prohibited.

05/17 2500-3247