

Sliding Door Hardware

ASSA ABLOY presents an updated and aesthetically-pleasing twist on a classic idea that allows you to transform a simple doorway into a stylish focal point, while recovering the in-swing and out-swing space required for hinged doors.



ASSA ABLOY

The global leader in
door opening solutions

Copyright © 2017 ASSA ABLOY Inc. All rights reserved. Reproduction in whole or in part without the express written permission of ASSA ABLOY Inc. is prohibited.

Pemko Stainless Steel Sliding Track Hardware Systems

The Pemko stainless steel sliding track hardware line offers multiple weight options, compatibility with Rockwood Pulls, and custom track lengths to fit most application. This line is perfect when flexibility is a must in a sliding track hardware system.

Features

- Nylon-coated wheels provide smooth, quiet operation
- Hangers contain anti-rise pin preventing door lifting from track

Specifications

Maximum Door Weight:	198 lbs. to 240 lbs. depending upon hanger style
Door Thickness:	For glass doors $\frac{3}{8}$ " to $\frac{1}{2}$ " thick
Base Material:	<ul style="list-style-type: none"> • Stainless steel track and hangers • Nylon coated rollers
Finishes:	US32/629, US32D/630, 314E
Patents, Approvals, Listings:	Meets performance requirements of ANSI/BHMA 156.14, Grade 1, for sliding doors by exceeding 100,000 cycles in operation
System Components:	<ul style="list-style-type: none"> • Stainless steel track (6'6" or 8'2"), with end caps • Hangers (2) • Wall brackets • Door bottom guide (1) • Track stops (2) • Mounting and installation hardware

For custom track lengths, contact ASSA ABLOY Glass Solutions.

Flush Pull Options

- Door Thickness: $\frac{3}{8}$ " to $\frac{1}{2}$ "
- Dimensions: 2 $\frac{1}{4}$ " diameter

FP-Open



FP-Closed



- For glass doors up to 240 lbs.
- Five styles of door hangers that suite with Rockwood door pulls

Options

G60

G60 Door Weight

- Up to 198 lbs.
- Hanger Height: $3\frac{5}{8}$ "

G70

G70 Door Weight

- Up to 240 lbs.
- Hanger Height: $3\frac{11}{16}$ "

G80

G80 Door Weight

- Up to 198 lbs.
- Hanger Height: $3\frac{11}{16}$ "

G90

G90 Door Weight

- Up to 198 lbs.
- Hanger Height: $4\frac{1}{16}$ "

G100

G100 Door Weight

- Up to 198 lbs.
- Hanger Height: $3\frac{5}{8}$ "

ASSA ABLOY

The global leader in
door opening solutions

Door Pulls

Comfortable grip, soft leather, and sleek form. A few words to describe our striking Rockwood door pulls. With endless design options to choose from, our pulls will add contemporary beauty to any door opening.



ASSA ABLOY

The global leader in
door opening solutions

Copyright © 2017 ASSA ABLOY Inc. All rights reserved. Reproduction in whole or in part without the express written permission of ASSA ABLOY Inc. is prohibited.

Rockwood Decorative Door Pulls

Product Features

- Solid stainless steel pulls
- Made with high quality, choice materials including leather and Santoprene™
- Heavy duty mounting features hex drive for positive tightening and oversized fasteners for superior strength
- Custom leather colors available on special order
- Suites with door hardware from other ASSA ABLOY Group brands
- Full line of Rockwood door pulls available (see Rockwood Architectural Pull catalog)

Specifications

Projection:	3"
Grip Diameter:	Round 1 ¹ / ₄ " Square 3 ³ / ₄ " - 1 ¹ / ₂ "
Over Length:	Up to 96" available
Mounting Hardware Options:	Back-to-back, heavy duty (BTBHD) Decorative thru bolt, heavy duty (DTBHD)
Door Thickness:	1 ¹ / ₄ " to 1"
Base Material:	Stainless steel
Finishes:	US32/629, US32D/630, US28/628, 314E

Leather Options:

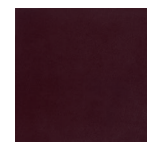
English bridle leather



B-LBRN
(Light Brown)



B-BUR
(Burgundy)



B-MBRN
(Medium Brown)

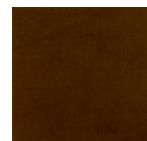


B-DBRN
(Dark Brown)



B-BLK
(Black)

Upholstery leather



U-DBRN
(Dark Brown)



U-BLK
(Black)

Part No.	Description	Finishes	Mounting Hardware Options	Options
RM2110	MezzoTek Stepped Post	US32/629, US32D/630, 314E	BTBHD - Back to Back Heavy Duty DTBHD - Decorative Thru Bolt Heavy Duty	Specify Leather Color
RM2510	SoftMet Santoprene™ Grip			
RM3301	MegaTek Post Mount	US32/629, US32D/630, US28/628, 314, 314E		
RM3210/RM3401	NeoMax Post Mount GripZone	US32/629		
RM6010/RM6061	English Bridle Leather Surface Wrapped	US32/629, US32D/630, 314E		
RM6310	English Bridle or Upholstery Leather Flush Wrapped			
RM7910	GeoMetek Narrow Profile		BTB - Back to Back	

ASSA ABLOY

The global leader in
door opening solutions

Rockwood Decorative Door Pulls (continued)



RM2110



RM2510



RM3301



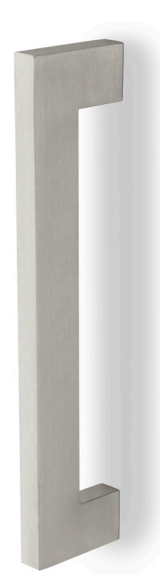
RM3210/RM3401



RM6010/RM6061



RM6310



RM7910

ASSA ABLOY

The global leader in
door opening solutions

Rockwood Door Pulls

Product Features

- Solid stainless steel inserts brazed into ends provide solid surface area for mounting systems
- Lighter weight tubular pulls reduce environmental impact
- Heavy duty mounting features hex drive for positive tightening and oversized fasteners for superior strength

Specifications

Pull Bar Projection:	3 ¹ / ₂ " stainless steel 3" aluminum
Push Bar Projection:	2 ³ / ₄ "
Grip Diameter:	1"
Door Thickness:	1/ ₄ " to 1"
Base Material:	Stainless steel, aluminum
Finishes:	US32/629, US32D/630, US28/628, 314E



Straight Single Bar Sets



Straight Door Pulls

Part Numbers

Part No.	Description	Center-to-Center	Overall Length	Mounting Hardware Options
110-RKW	Straight Door Pulls	8"	9"	<ul style="list-style-type: none"> • BTB - Back-to-Back • HDBTB - Heavy Duty Back-to-Back • DTB - Decorative Thru Bolt
111-RKW	<i>Note: Solid door pull. For Tubular, reference "T" in front of part number.</i>	10"	11"	
112		12"	13"	
118		18"	19"	
11047	Straight Single Bar Sets	8"	9"	<ul style="list-style-type: none"> • BTB/DTB - Back-to-Back/Decorative Thru Bolt • HDBTB/DTB - Heavy Duty Back-to-Back/Decorative Thru Bolt
11147	<i>Note: Solid door pull. For Tubular, reference "T" in front of part number.</i>	10"	11"	
11247		12"	13"	
11847		18"	19"	

ASSA ABLOY

The global leader in
door opening solutions

Door Controls

ASSA ABLOY door control solutions offer precision control, making interaction with the door almost effortless. Our product design is proven to be easy to install and maintain, with a long-life of reliability, and ASSA ABLOY door closers and operators are tested for compliance with the latest code requirements



ASSA ABLOY

The global leader in
door opening solutions

Copyright © 2017 ASSA ABLOY Inc. All rights reserved. Reproduction in whole or in part without the express written permission of ASSA ABLOY Inc. is prohibited.

RIXSON 609 Overhead Concealed Door Closer

The 609 offers reliable control of interior and exterior doors, while offering the minimal appearance preferred by top designers. A compact, cast iron body makes Rixson's 609 an easy fit for a wide range of applications and able to withstand abuse.

Product Features

- Medium-duty cast iron closer
- Adjustable spring size 1-3
- Double acting
- Center hung
- End load arms
- Non-handed
- Optional hold open assembly built into closer
- Separate closing and latching valves
- 5 mm extended spindle
- All weather fluid

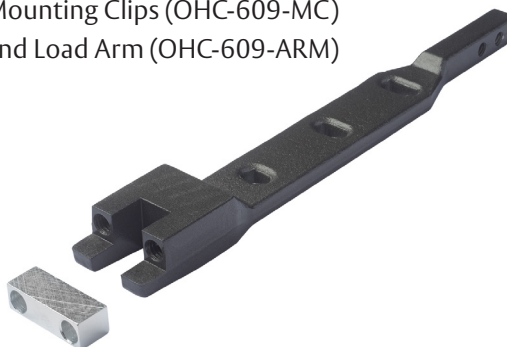
Specifications

- Closer: OHC-609**
- 90° Back stop, non-hold open (OHC-609-90NHO)
 - 90° Back stop, hold open (OHC-609-90HO)
 - 105° Back stop, non-hold open (OHC-609-105NHO)
 - 105° Back stop, hold open (OHC-609-105HO)
 - Closer mounting clips pre-installed into finished header tube (header specified separately)
- Maximum Door Weight:** 200 lbs.
- Maximum Door Width:**
- Interior 42"
 - Exterior 36"
- Base Material:**
- Cast iron body
 - Radial ball bearing bottom pivot
- Dimensions:** 11³/₄" x 3³/₄" x 1¹/₂"
- Finishes:** US32/629, US32D/630, 314E
- Patents, Approvals, Listings:**
- Meets ANSI/BHMA A156.4, Grade 1
 - UL / cUL listed for use on fire rated doors
 - UL10C listed for positive pressure fire test
 - Barrier free operation to comply with Federal Accessibility Standards (ADA); center pivoted applications comply with ANSI A117.1



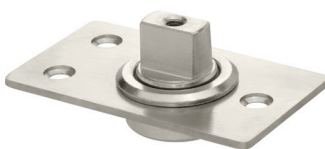
Accessories

- Mounting Clips (OHC-609-MC)
- End Load Arm (OHC-609-ARM)



Pivot Options

- Door Rail Adjustable Endload Bottom Pivot (PV-ENDLOAD)
- Patch Fitting Floor Mounted Pivot (PF-FM-PIVOT)
- Patch Fitting Adjustable Pivot (PF-ADJ-PIV)



ASSA ABLOY

RIXSON 6280 Floor Closer

Ideal for larger, heavier doors where ANSI Grade 1 reliability and durability are required. Whether used offset or center hung, the 6280 concealed floor closer offers a minimal appearance that can fit the needs of a variety of openings.

Product Features

- Heavy-duty cast iron closer
- Adjustable spring size 3-6
- Double acting
- Center or offset hung
- Non-handed
- Separate closing, latching, and backcheck/DA valves
- Closer adjustable within cement case
- All weather fluid
- Variable hold open position (80-175 degrees)
- Variable delayed action
- Variable length 3° offset or straight spindles
- Stainless steel cover plate
- Walking beam or 3/4" offset top pivot

Specifications

Closer Body with Cement Case: FC-6280

Maximum Door Weight: 660 lbs.

Maximum Door Width:

- Interior 54"
- Exterior 48"

Base Material:

- Cast iron closer body
- Stainless steel cover plate
- Zinc plated steel cement case

Finishes: US32/629, US32D/630, 314E

Patents, Approvals, Listings:

- ANSI standard A156.4, Grade 1
- UL/cUL listed for use on fire rated doors

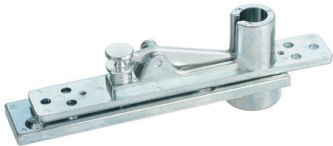


Optional 3/4" offset arm

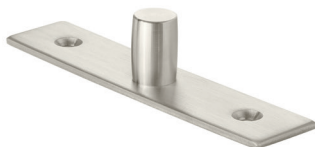


Pivot Options

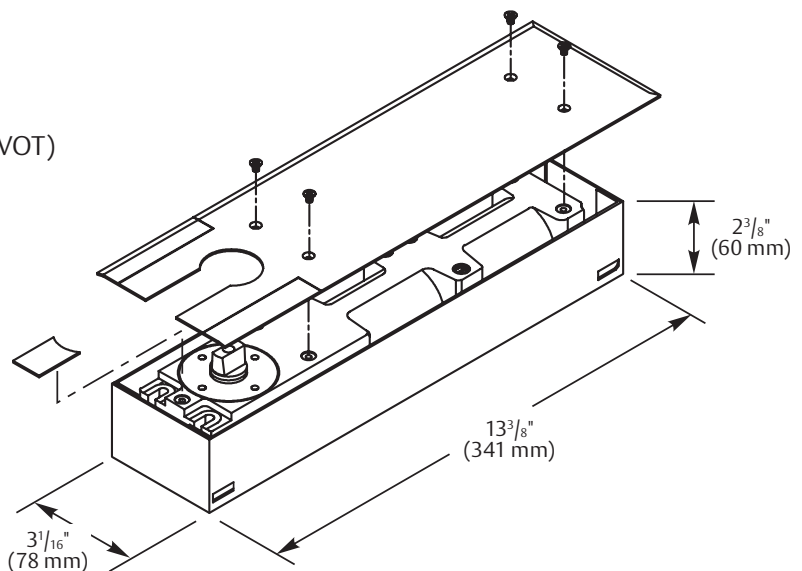
- Walking Beam Pivot (PV-WALKBEAM)



- Patch Fitting Surface Mounted Pivot (PF-SM-PIVOT)



- 3/4" Offset Top Pivot (PV-180)



ASSA ABLOY

The global leader in
door opening solutions

RIXSON 6275 Floor Closer

The perfect solution for smaller doors where the durability and minimal aesthetic of a concealed floor closer are necessary. Highly adaptable and able to be offset or center hung, the 6275 can fit the needs of nearly any light opening.

Product Features

- Heavy-duty cast iron closer
- Adjustable spring size 1-4
- Double acting
- Center or offset hung
- Non-handed
- Variable length 3° offset or straight spindles
- Separate closing and latching valves
- Closer adjustable within cement case
- All weather fluid
- Stainless steel cover plate
- Walking beam or 3/4" offset top pivot

Specifications

Closer Body with Cement Case FC-6275:

- 90° Hold open (FC-6275-90HO)
- 105° Hold open (FC-6275-105HO)
- 105° Non-hold open (FC-6275-105NHO)

Maximum Door Weight: 330 lbs.

Maximum Door Width:

- Interior 42"
- Exterior 36"

Base Material:

- Cast iron body
- Stainless steel cover plate
- Zinc plated steel cement case

Finishes: US32/629, US32D/630, 314E

Patents, Approvals, Listings: ADA compliant



Optional 3/4" offset arm

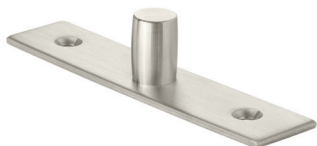


Pivot Options

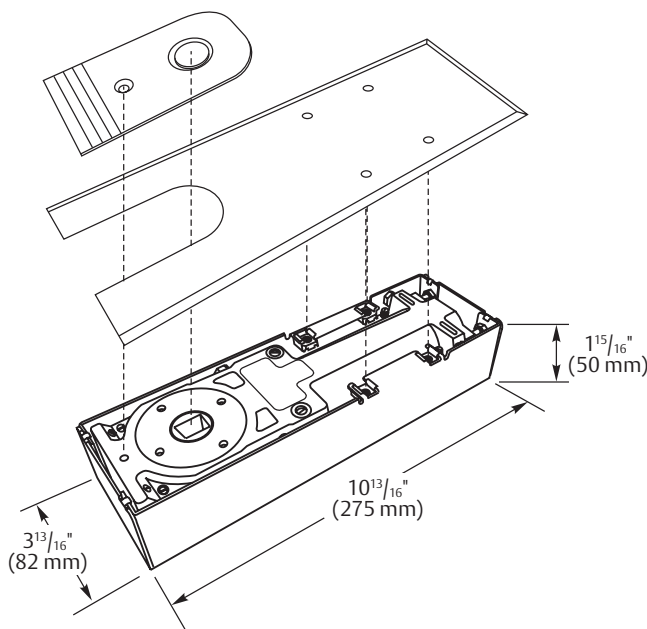
- Walking Beam Pivot (PV-WALKBEAM)



- Patch Fitting Surface Mounted Pivot (PF-SM-PIVOT)



- 3/4" Offset Top Pivot (PV-180)



ASSA ABLOY

The global leader in door opening solutions

RIXSON 28 Single-Acting Center Hung Floor Closer

Floor closers provide the best mechanical means to support and control a door with a concealed aesthetic that is also vandal resistant. The 28 floor closer's heavy-duty construction, including one-piece spindles, offers additional support to better handle heavier and/or high-traffic doors.

Product Features

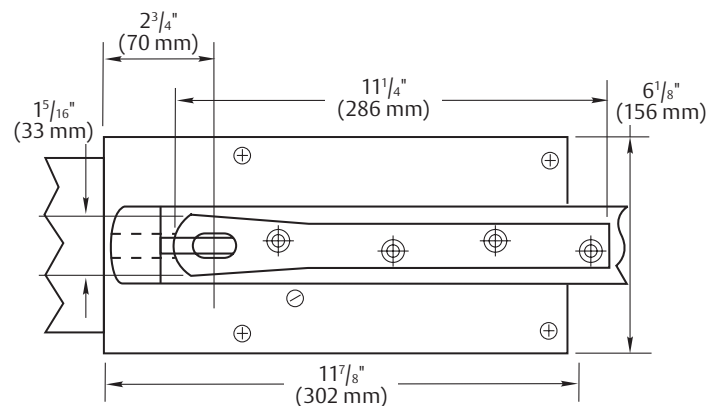
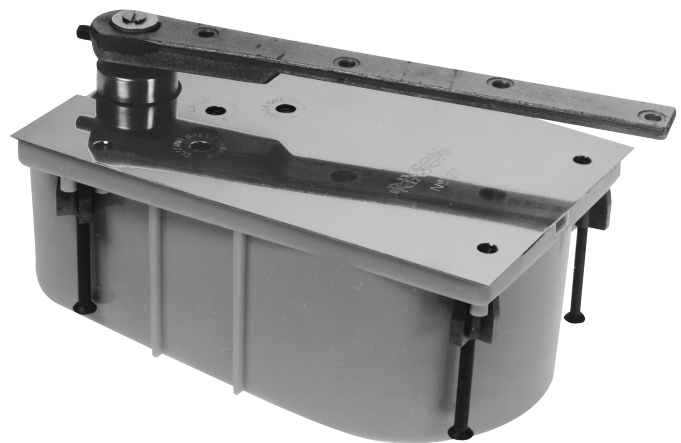
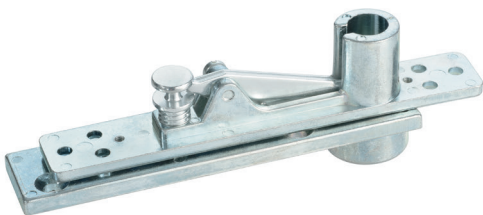
- Center hung
- Single acting, handed
- Separate and independent closing, latching, and backcheck valves
- Built-in positive dead stop
- Hold open options available
- Available with floor plate or threshold installation (floor plate shown)
- Extended spindles available in $\frac{1}{2}$ " increments up to 2" longer than standard

Specifications

Closer:	FC-28 FC-PH28
Maximum Door Weight:	350 lbs.
Maximum Door Size:	4'0" x 8'6"
Base Material:	Cyclac, rustproof cement case
Finishes:	US32/629, US32D/630, 314E
Patents, Approvals, Listings:	Meets ANSI/BHMA A156.4, Grade 1 requirements
Options	Selective hold open: <ul style="list-style-type: none"> • (90S) 90° Hold open • (105S) 105° Hold open • (PH) Factory set - 5 lbs. (Interior); 8-1/2 lbs. optional (Exterior) (available upon request)

Pivot Options

- Walking Beam Pivot (PV-WALKBEAM)



ASSA ABLOY

The global leader in
door opening solutions

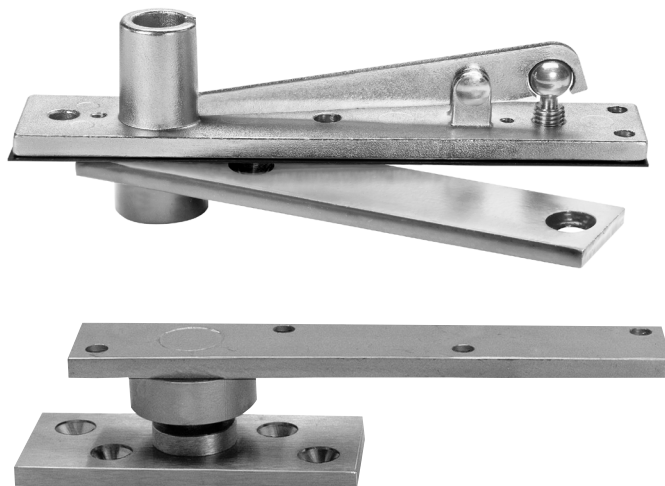
Pivots

RIXSON 370 Center Hung Pivot Set

Pivot sets provide the best possible means of hanging a door. They are designed to work with the laws of physics to provide long-lasting performance and reliability. The 370 center hung pivot set offers a minimized aesthetic.

Product Features

- Standard top pivot 340 included
- Bottom pivot mounts directly to floor
- Pivot set features sealed bearings for protection against weather and debris
- Available with extended spindles in $\frac{1}{2}$ " increments up to 2" longer than standard



Specifications

Maximum Door Weight: 500 lbs.

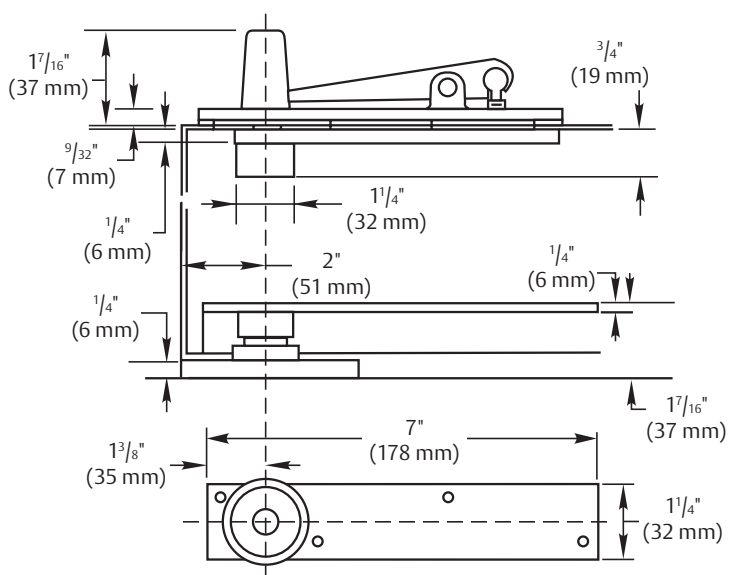
Maximum Door Size: 3'8" x 8'6"

Base Material: Brass, steel, and cast iron

Finishes: US26D/626, US26/625, US10B/613

Patents, Approvals, Listings: Meets ANSI/BHMA A156.4, Grade 2 requirements

Part Number: PV-370



RIXSON 180 Offset Top Pivot

- Standard top pivot for most offset pivot sets and floor closers
- $\frac{3}{4}$ " (19 mm) offset (measured from centerline of pivot to face of door)
- Full Mortise
- Non-handed
- Finishes: US32D/630
- Part Number: PV-180

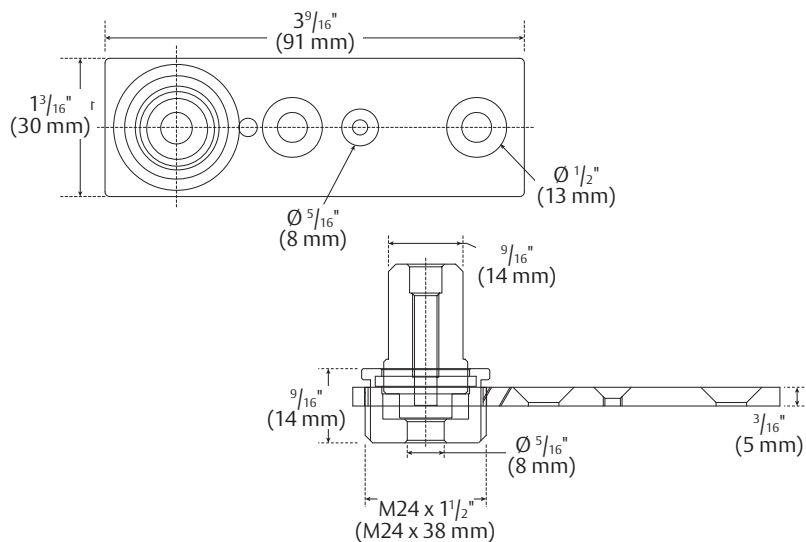
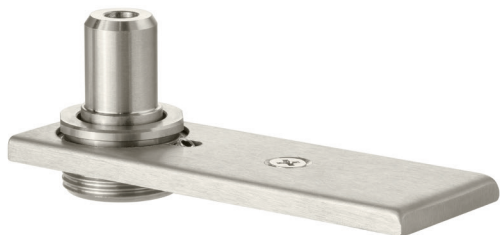


ASSA ABLOY

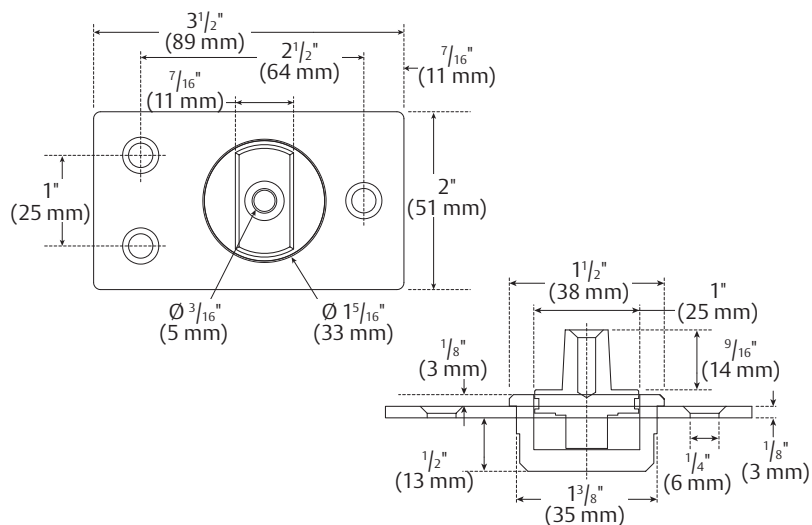
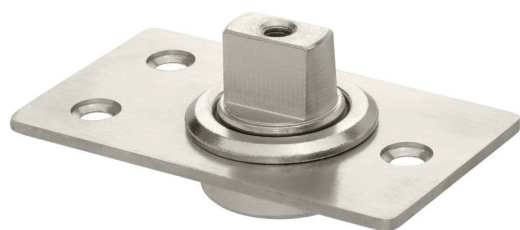
The global leader in door opening solutions

Pivots (continued)

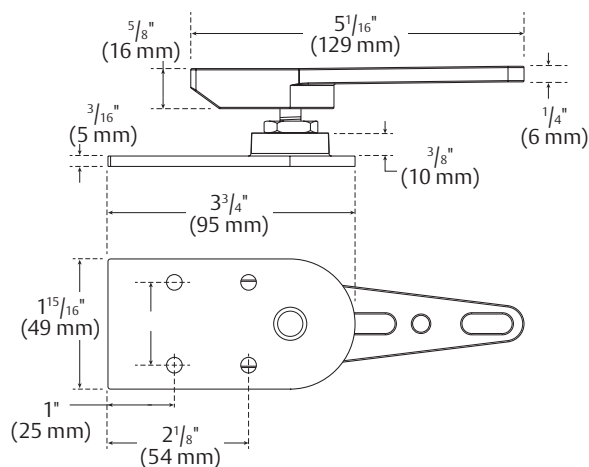
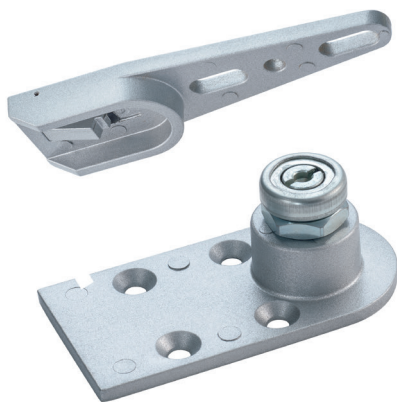
Adjustable Pivot (PF-ADJ-PIVOT)



Floor Mount Pivot (PF-FM-PIVOT)



Adjustable End Load Bottom Pivot (PV-ENDLOAD)

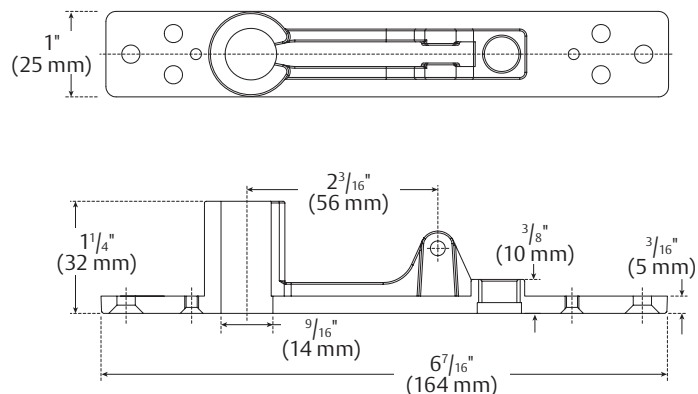
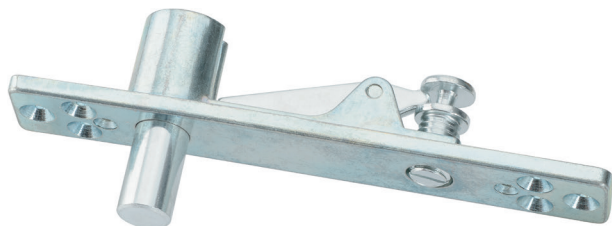


ASSA ABLOY

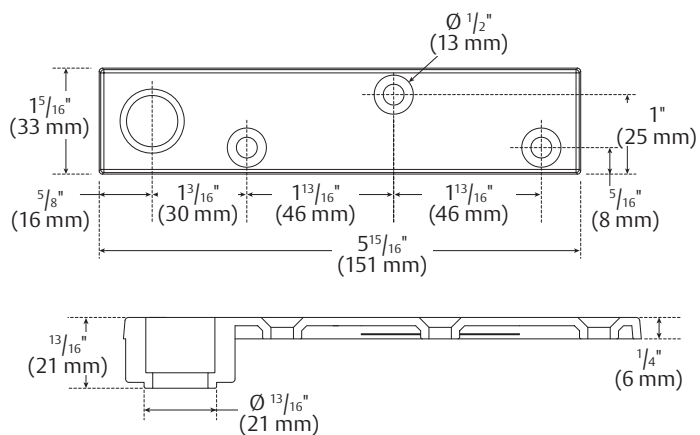
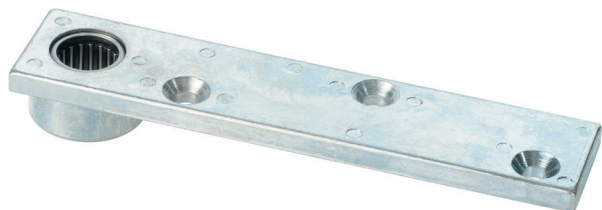
The global leader in
door opening solutions

Pivots (continued)

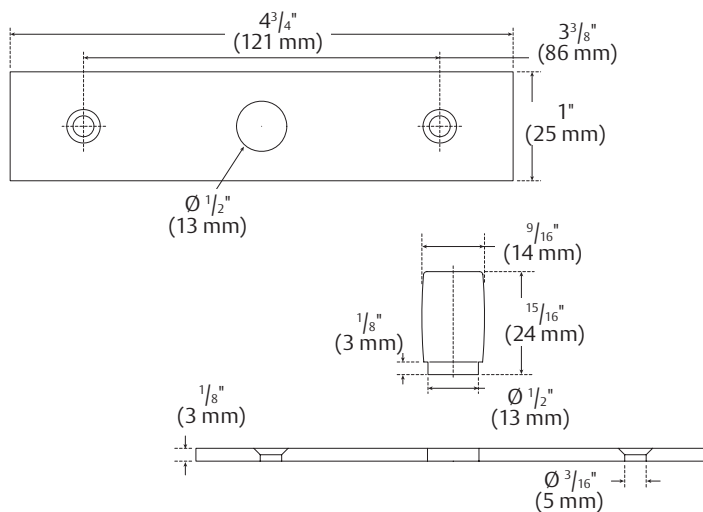
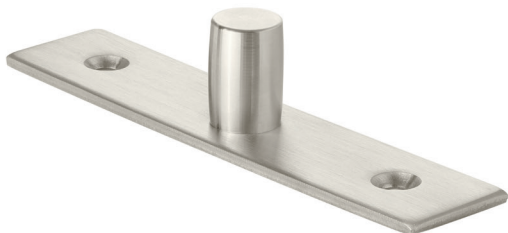
Walking Beam Pivot - Header (PV-WALKBEAM)



Walking Beam Pivot - Door Rail (PV-WALKBEAM)



Surface Mount Pivot (PF-SM-PIVOT)



ASSA ABLOY

NORTON 5710 Low Energy Power Operator

This operator installs in minutes rather than hours and consists of three basic components: inverter, motor and door closer body. Norton's 5710 can function as a standard door closer, allowing the door to be opened manually and closed automatically due to the internal door closer spring force.

Product Features

- Pull side mounting unit
- Operates as mechanical surface closer during closing cycles, when door is opened manually, or if power is turned off
- Easy-to-install and set up
- Non-handed
- Obstruction detection (open)
- Unit activation options include wall switches, motion sensors & radio frequency device
- External On/Off switch
- Features NORTON 1601 Series Door Closer
 - Adjustable hydraulic backcheck
- Adjustable hold-open: 0 to 30 seconds
- 2-year warranty

Specifications

Operator: OP-5710
Power Input: 120VAC, 60Hz
Current Draw .6A
Relay Output: SPDT - N.O./N.C. (jumper)
Base Material: Steel

Dimensions:

- Body with cover: 29" x 5 1/4"
- Body projection: 4 3/8"
- Track assembly: 23"

Finishes: US28/689, US20/690

Patents, Approvals, Listings

- ANSI/BHMA A156.19 certified
- Meets ANSI/BHMA A156.4 requirements
- UL / cUL listed for use on fire rated doors
- UL10C listed for positive pressure fire test
- Complies with the Americans with Disabilities Act (ADA)
- This product is manufactured in an ISO 9001 facility



ASSA ABLOY

The global leader in
door opening solutions

NORTON 5710 Low Energy Power Operator (continued)

Accessories

#679 Signage Kit (supplied standard)



(1 per switch)



(1 per switch)



(2 per operator)

700 Wave to Open Switch

- Single-gang and double-gang packaged together
- Sensor requires movement for activation
- Variable relay – hold time from 0-35 seconds
- Range 0" to 4"
- Dimensions:
3" W x 4³/₄" H (single)
4¹/₂" W x 4¹/₂" H (double)



Touchless Wall Switch
(OP-700-SGL)



Touchless Wall Switch
(OP-700-DBL)

Activating Door Switches

- 6" W x 6" H
- 9 volt battery
- 15 amp @ 125 VAC
- Flush mounted
- Stainless steel with blue letters
- 531 and 533 - radio frequency (433MHz). Used with RF option and 539. Surface mount boxes are included.
- 505 and 506 - hard wired*. Surface mount boxes are not included. If required, specify: 555 - 6" square surface mount box 557 - 6" round surface mount box.

**Switches may also be installed with single or double gang electrical box using fasteners included.*



Square Push Buttons
(OP-505-PB/OP-531-PB)



Round Push Buttons
(OP-506-PB/OP-533-PB)

Radio Frequency Receiver
(OP-539-RFR)



433 Mhz

ASSA ABLOY

The global leader in
door opening solutions

Mechanical Locking Hardware

Good design and security go hand-in-hand with our mechanical locking options. ASSA ABLOY offers a variety of locks and dead bolts to secure your opening.



ASSA ABLOY

The global leader in
door opening solutions

Copyright © 2017 ASSA ABLOY Inc. All rights reserved. Reproduction in whole or in part without the express written permission of ASSA ABLOY Inc. is prohibited.

Rockwood Locking Door Pulls

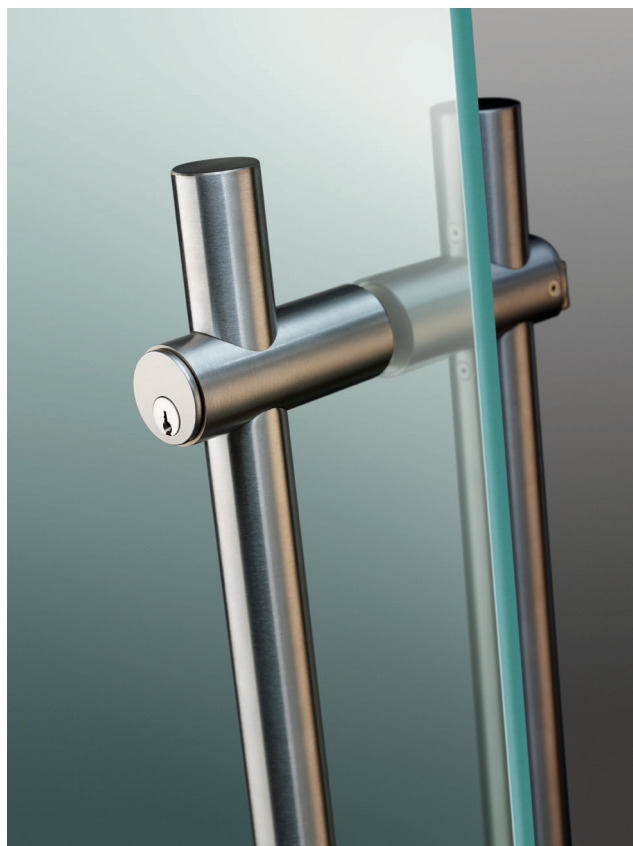
The Locking Pull System integrates a contemporary post mount style door pull with a dead bolt locking system. Engineered for smooth attachment, the locking pull is manufactured to ensure strength and durability with clean and appealing lines.

Product Features

- Key operated from outside; turn piece on inside
- Multiple locking options: up, down or both
- Bolt location: 2" from face of door to centerline of bolt
- Bolt has $\frac{13}{16}$ " travel with fine adjustment
- Horizontal push/pull bar option
- Dummy versions available
- Designed to suite with Rockwood architectural door pulls and accessories

Specifications

Pull Projection:	2 $\frac{5}{8}$ "
Cylinder Projection:	3 $\frac{1}{2}$ "
Grip Diameter:	1 $\frac{1}{4}$ "
Center-to-Center and Overall Length:	Specify
Mounting Hardware:	Back-to-back (BTB)
Door Thickness:	For glass doors $\frac{3}{8}$ " to $\frac{7}{8}$ " thick (alternate thicknesses available upon request)
Base Material:	Stainless steel
Finishes:	US32D/630, US32/629, 314E
Thumbturn Options:	<ul style="list-style-type: none"> • Large thumbturn; specify ADA • Standard thumbturn
Locking Pull Model Options:	<ul style="list-style-type: none"> • DBU (half-height, dead bolt up) • DBD (half-height, dead bolt down) • FHU (full-height, bolt up) • FHD (full-height bolt down) • PMPB (horizontal push/pull bar; available on DBU and DBD models only)



Cylinder Options

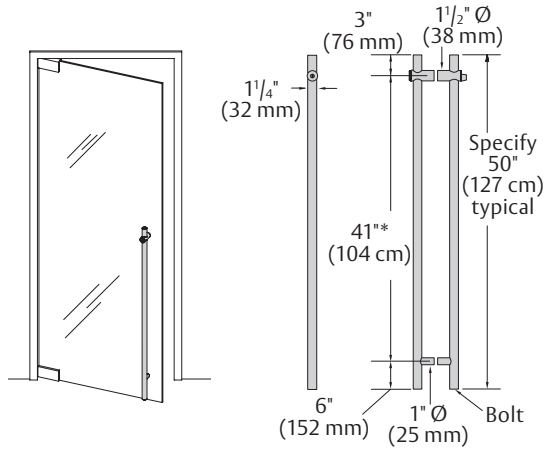
Code 02	Small format interchangeable door housing, 7-pin (SFIC)
Code 03	Small format interchangeable core housing w/plastic constructions core, 7-pin (SFIC)
Code 05	Customer supplied cylinder
Code 07	Dummy cylinder
Code 08	Privacy function - keyless locking function

ASSA ABLOY

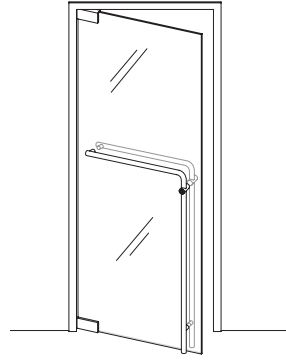
The global leader in
door opening solutions

Locking Door Pull Model Options

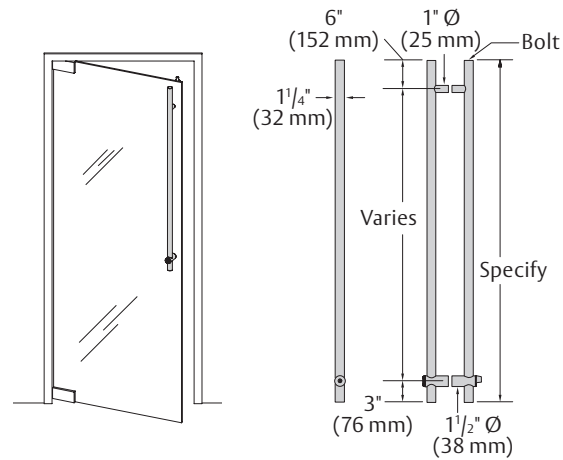
DBD - Dead Bolt Down, Half-Height



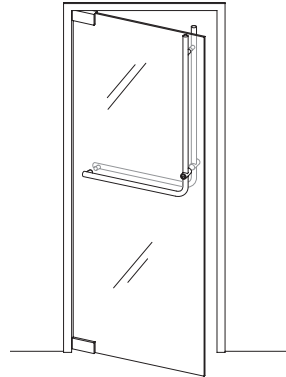
DBDPMPB - Dead Bolt Down With Horizontal Bar



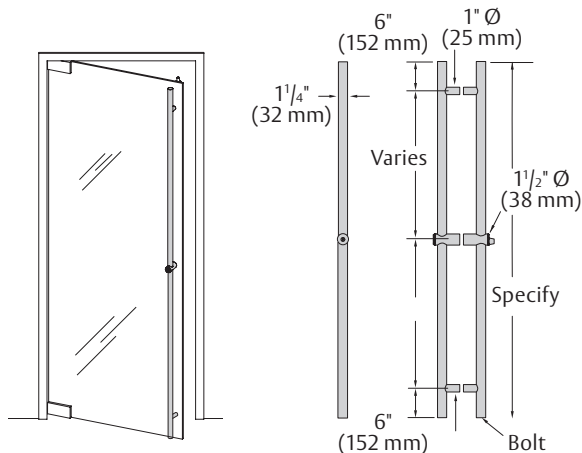
DBU - Dead Bolt Up, Half-Height



DBUPMPB - Dead Bolt Up With Horizontal Bar



FHD/FHU - Dead Bolt Up Or Down, Full-Height



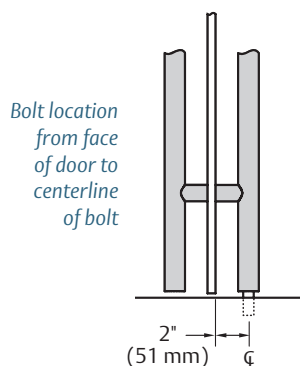
Notes: Pulls are available in various sizes to fit job conditions. For ADA requirements, cylinder must be located 34" to 48" above finished floor. Minimum clearance from pull to finished floor is 3/8" at factory settings.

ASSA ABLOY

The global leader in
door opening solutions

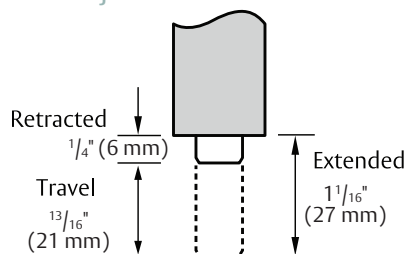
Locking Door Pull Model Options

Location From Door



All glass door applications include a bushing and washer to insulate the glass from the pull. Sturdy fasteners securely attach the pull to the door making for a durable, trouble free installation. Simple glass prep requires two (or three) round holes.

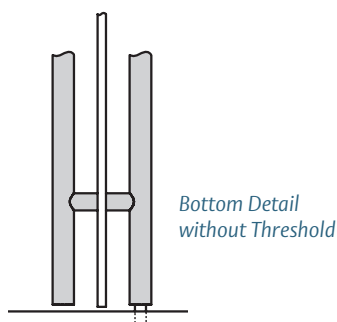
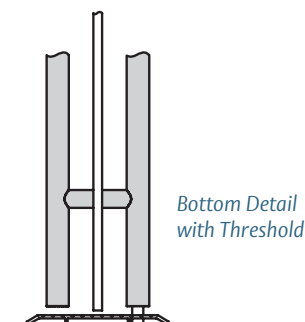
Bolt Adjustment



Adjusts $\frac{1}{4}"$ in and out from the shown factory settings.

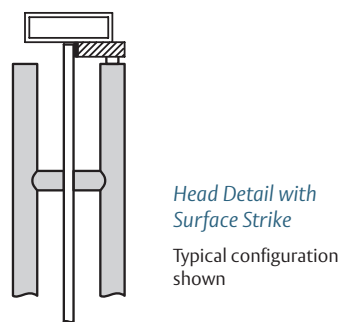
Bolt Into Floor Models - Detail At Floor

- DBD, FHD, FHB



Bolt Into Head Models - Detail At Head

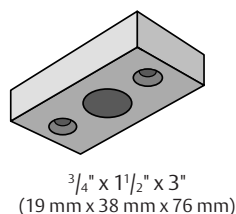
- DBU, FHU, FHB



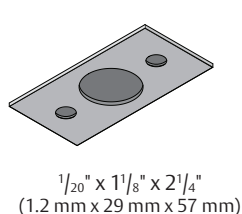
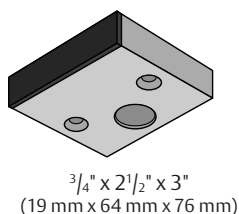
Strike Options

Top Strikes

LPS01

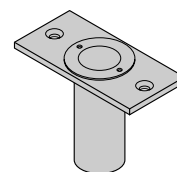


LPS02 (rubber stop) LPS03



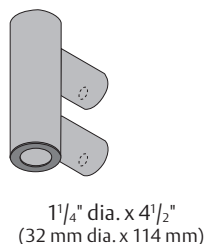
Bottom Strikes

570

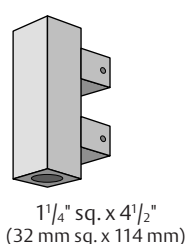


Dust Proof Strike
Face Plate: $1\frac{3}{8}" \times 2\frac{7}{8}"$ (35 mm x 73 mm)

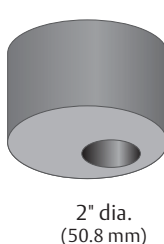
LPS04



LPS05



LPS06



ASSA ABLOY

YALE® 8800 Series Mortise Locks

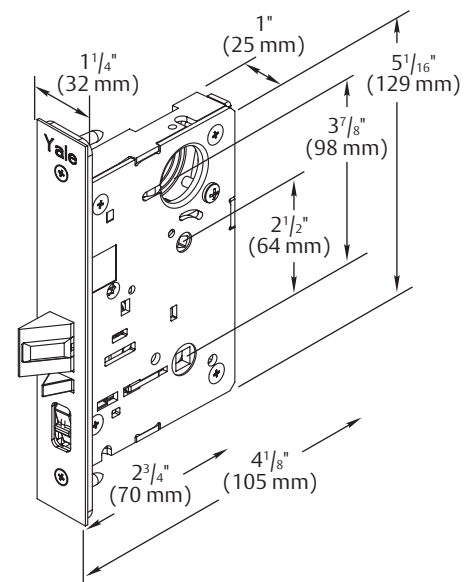
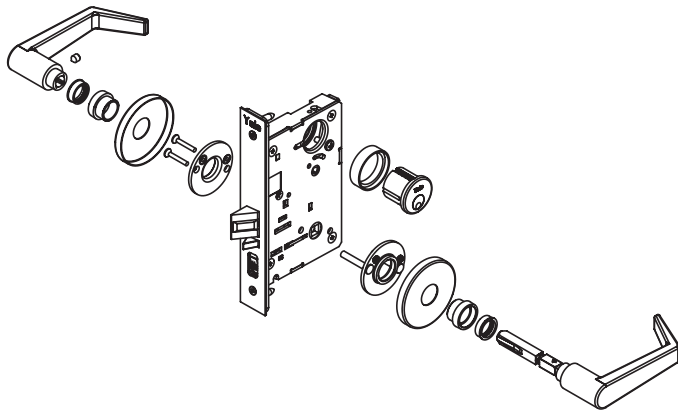
The 8800 Series mortise lock from YALE® provides superior strength and security where your facility needs it the most. The dependable design has ANSI/BHMA Grade 1 certification and can withstand the demands of routine use. With several trim and finish options, these locks offer a solution for every aesthetic.

Product Features

- Works with Center Lock Patch
- 3 Mechanical Functions
 - Passage (ANSI F01)
 - Entry (ANSI F04)
 - Office/Classroom
- Field reversible
- 10-year mechanical warranty
- Trim Options
 - 11 lever styles: four standard, seven decorative
 - Internal heavy-duty spring cartridge prevents lever sag
 - Through-bolted installation ensures positive alignment of trim with lock case
- 1 rosette

Specifications

Armor Front:	8" x 1 ¹ / ₄ "
Latchbolt:	3 ¹ / ₄ " throw, stainless-steel, one-piece, anti-friction
Backset:	2 ³ / ₄ "
Hubs:	3 ³ / ₈ " solid steel, fine-blanked and heat treated for additional strength
2815 Curved Lip Strike:	1 ¹ / ₄ " long; non-handed
Cylinder Options:	Ordered separately
Base Material:	<ul style="list-style-type: none"> • Case - wrought steel, zinc dichromated • Levers – solid cast brass
Finishes:	US14/618, US15/619, 314E
Patents, Approvals, Listings:	<ul style="list-style-type: none"> • ADA compliant – ANSI A117.1 • ANSI/BHMA A156.13, Series 1000, Operational Grade 1 • UL/cUL 3 Hour • Windstorm Certified (refer to local codes)



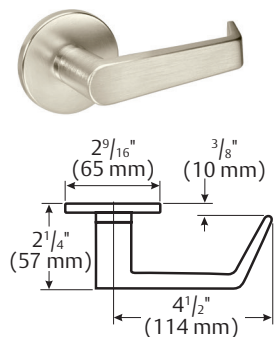
ASSA ABLOY

The global leader in
door opening solutions

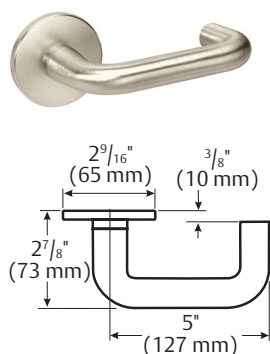
YALE® 8800 Series Mortise Lock Trim Offering

Standard Levers

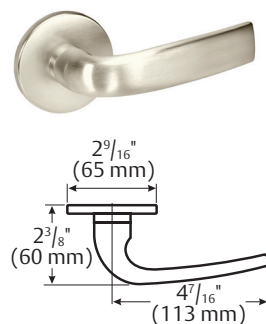
Augusta – AU



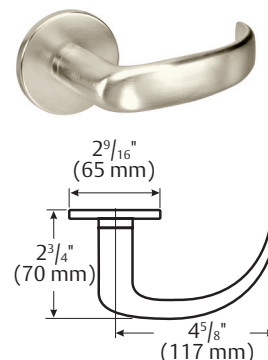
Carmel – CR



Jefferson – JN

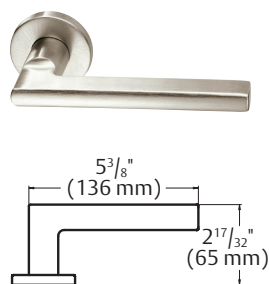


Pacific Beach – PB

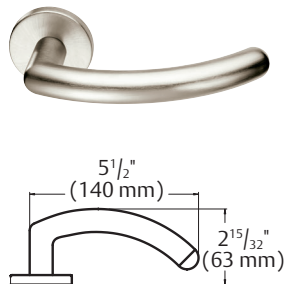


Reflections® Decorative Levers

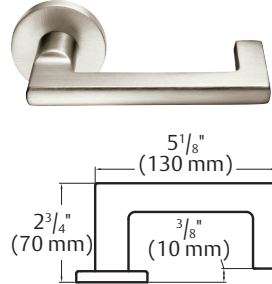
TB



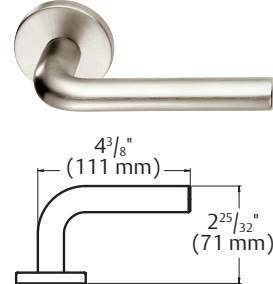
TR



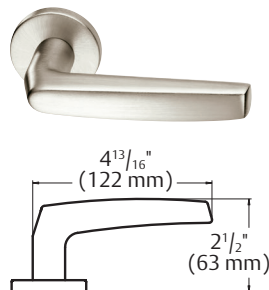
UB



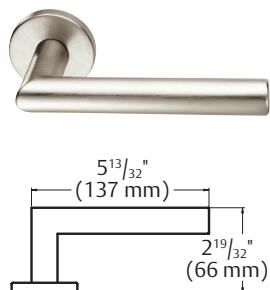
TN



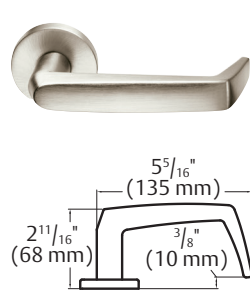
TC



TS

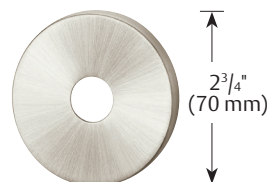


UC



Rosette

R3

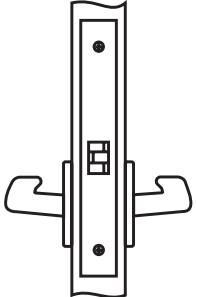
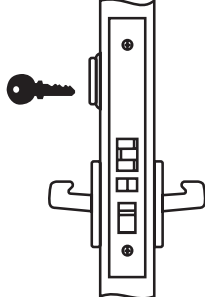
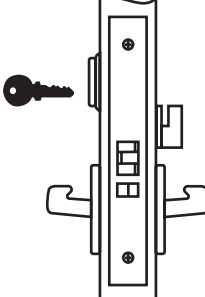


ASSA ABLOY

The global leader in
door opening solutions

YALE® 8800 Series Mortise Lock

Functions

Option	ANSI No.	Description	Illustration
Passage	F01	<ul style="list-style-type: none"> For doors that do not require locking Latchbolt retracted by lever either side at all times 	
Entry/Office	F04	<ul style="list-style-type: none"> For doors where locking is required Latchbolt retracted by lever either side, except when outside lever is locked by stopwork activator When outside lever is locked, latchbolt is operated by key outside and lever inside Deadlocking latchbolt 	
Office/Classroom	N/A	<ul style="list-style-type: none"> Latchbolt retracted by knob/lever either side unless outside knob/lever is locked by key outside or thumbturn inside Latchbolt retracted by thumbturn inside or key outside Inside knob/lever always active Deadlocking latchbolt 	

Mortise Locks How To Order

Lock	Function	Lever	Rose	Cylinder Info	Finish
ML	PAS – Passage ENT – Entry OFF – Office/Classroom	AU, CR, JN, PB TB, UB, TC, UC, TR TN, TS	R3	LC – Less Cylinder <i>(only specified on E and O functions)</i>	US14/618, US15/619, 314E

PART NUMBER EXAMPLES

Passage Lock: ML-PAS-TBR3.15

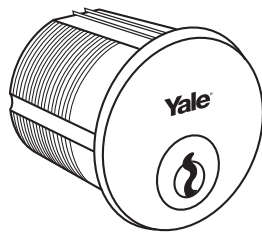
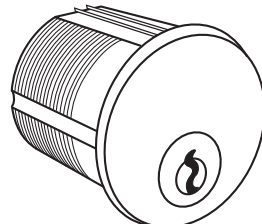
Entry Lock: ML-ENT-AUR3-LC.314E

ASSA ABLOY

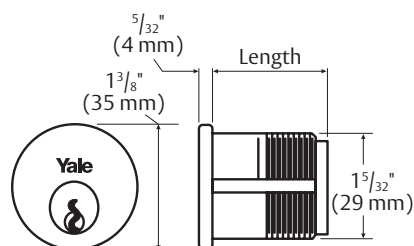
The global leader in
door opening solutions

YALE® 8800 Series Mortise Lock Cylinder Options

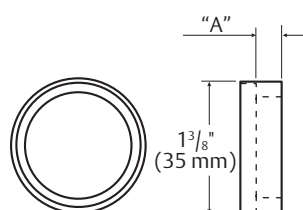
Mortise Cylinder Options

Application	Cam	Pins	Length	Keyway	Cylinder Collar	Illustration
Standard Cylinder	2160	6-Pin	1 $\frac{1}{8}$ "	Para keyway, keyed random Para keyway, 0 bit	1765 1 $\frac{1}{4}$ "	
Fixed Core Schlage "C" Keyway Cylinder	2160	6-Pin	1 $\frac{1}{8}$ "	Keyed random	1765 1 $\frac{1}{4}$ "	

Measurements

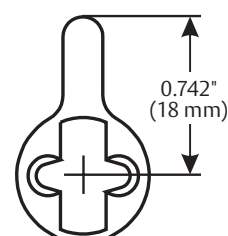


Collars



Glass Thickness	Collar Thickness ("A" Dimension)
1 $\frac{1}{2}$ "	1 $\frac{1}{4}$ "

Cam



Mortise Cylinders How To Order

Mortise Cylinder	Keyway	Collar Length	Finish
MC	PARA – Para keyway, keyed random SCHL – Schlage C keyway, random	250 (1 $\frac{1}{4}$)"	US14/618, US15/619, 314E

PART NUMBER EXAMPLES

- MC-PARA-250-KR.15
- MC-SCHL-250-OB.314E

ASSA ABLOY

The global leader in
door opening solutions

Center Lock Housings

Center Lock Patch

- Patch housing for YALE® Mortise Lock*
 - Entry (CLH-ENT)
 - Office (CLH-OFF)
 - Passage (CLH-PAS)
- 6" W x 10"H
- Available for 1/2" thick glass
- Glass cut-out required
- No cement or silicone required for installation
- Handed
- 2-year warranty
- Finishes: US14/618, US15/619, 314E

*Custom options for Corbin Russwin/Sargent available

Patch	Function	Handing	Glass Sizes	Finishes
CLH	PAS – Passage	LH, LHR, RH, RHR	B, C	US14/618, US15/619, 314E
	ENT – Entry			
	OFF – Office/Classroom			

PART NUMBER EXAMPLES

- Passage Lock: CLH-PAS-LH-BC.15
- Entry Lock: CLH-ENT-RH-BC.314E



Entry/Office



Passage

ASSA ABLOY

The global leader in
door opening solutions