



# Glass Solutions

*Brought to you by ASSA ABLOY*

The global leader in  
door opening solutions

**ASSA ABLOY**

PUSH



# Table of Contents

Door Rails .....	7
Sidelite Glazing Hardware .....	11
Headers .....	16
Patch Fittings.....	18
Panic Devices .....	23
Sliding Door Hardware .....	26
Door Pulls .....	28
Door Controls .....	32
Mechanical Locking Hardware .....	42
Electrified Hardware.....	53

**ASSA ABLOY**

The global leader in  
door opening solutions

Copyright © 2017 ASSA ABLOY Inc. All rights reserved. Reproduction in whole or in part without the express written permission of ASSA ABLOY Inc. is prohibited.







## ASSA ABLOY Glass Hardware Solutions

As the industry leader in door security, innovation, and design, ASSA ABLOY offers a complete line of commercial hardware solutions for all glass entrances and partitions, including: patch fittings, door rails, sliding and folding systems, architectural pulls, and mechanical and electrified locking products. Tested in our state-of-the-art, BHMA-certified lab, our products meet the most rigorous testing standards.

Our Glass Solutions program offers the convenience of placing a consolidated order with same day shipping and support from dedicated technical and customer service experts.



# Glass Solutions Program Information

The ASSA ABLOY Glass Solutions program offers the convenience of placing a single order, with one shipment, from multiple ASSA ABLOY brands.

## Customer Service/Technical Product Support

For Glass Solutions questions please contact us via phone or email.

Call: 855-594-6989

Email: [CustomerService.GlassSolutions@assaabloy.com](mailto:CustomerService.GlassSolutions@assaabloy.com) or [TechSupport.GlassSolutions@assaabloy.com](mailto:TechSupport.GlassSolutions@assaabloy.com)

## Hours of Operation

Customer Service and Technical Support: 8:00 am - 4:30 pm EST

## Ordering

To place an order:

Fax: 844-851-8665

Email: [Orders.GlassSolutions@assaabloy.com](mailto:Orders.GlassSolutions@assaabloy.com)

Website: [www.assaabloyglass.us](http://www.assaabloyglass.us)

## Lead Time

Lead times will vary. Orders containing stock items will ship within 48 hours of order acknowledgment. Lead times for non-stock items will change based on complexity and quantity. Standard stock rails and headers will ship within 72 hours. Products such as the glass panic device will ship within approximately 10 days. Expected ship dates will be listed on the acknowledgment.

## Part Number Structure

Our part numbers were designed to facilitate ease of ordering and ensure all products are tied to the coordinating job. Each part number specifies the product family, glass thickness (if applicable), and finish.

## Glass Thickness Sizing Codes

Glass Thickness	Size Code
$\frac{3}{8}$ "	A
$\frac{1}{2}$ "	B
$\frac{9}{16}$ "	C
$\frac{5}{8}$ "	D*
$\frac{11}{16}$ "	E*
$\frac{3}{4}$ "	F*
$\frac{13}{16}$ "	G*

\*Currently not available. Product in development.

## Finishes\*\*

US Code	ANSI/BHMA Code	Description
28	628	Clear Anodized Aluminum
314	n/a	Extra Dark Anodized Aluminum
(314E)	n/a	Extra Dark Anodized Equivalent
32D	630	Satin Stainless Steel
32	629	Bright Stainless Steel

\*\*Special finishes considered upon request

# ASSA ABLOY

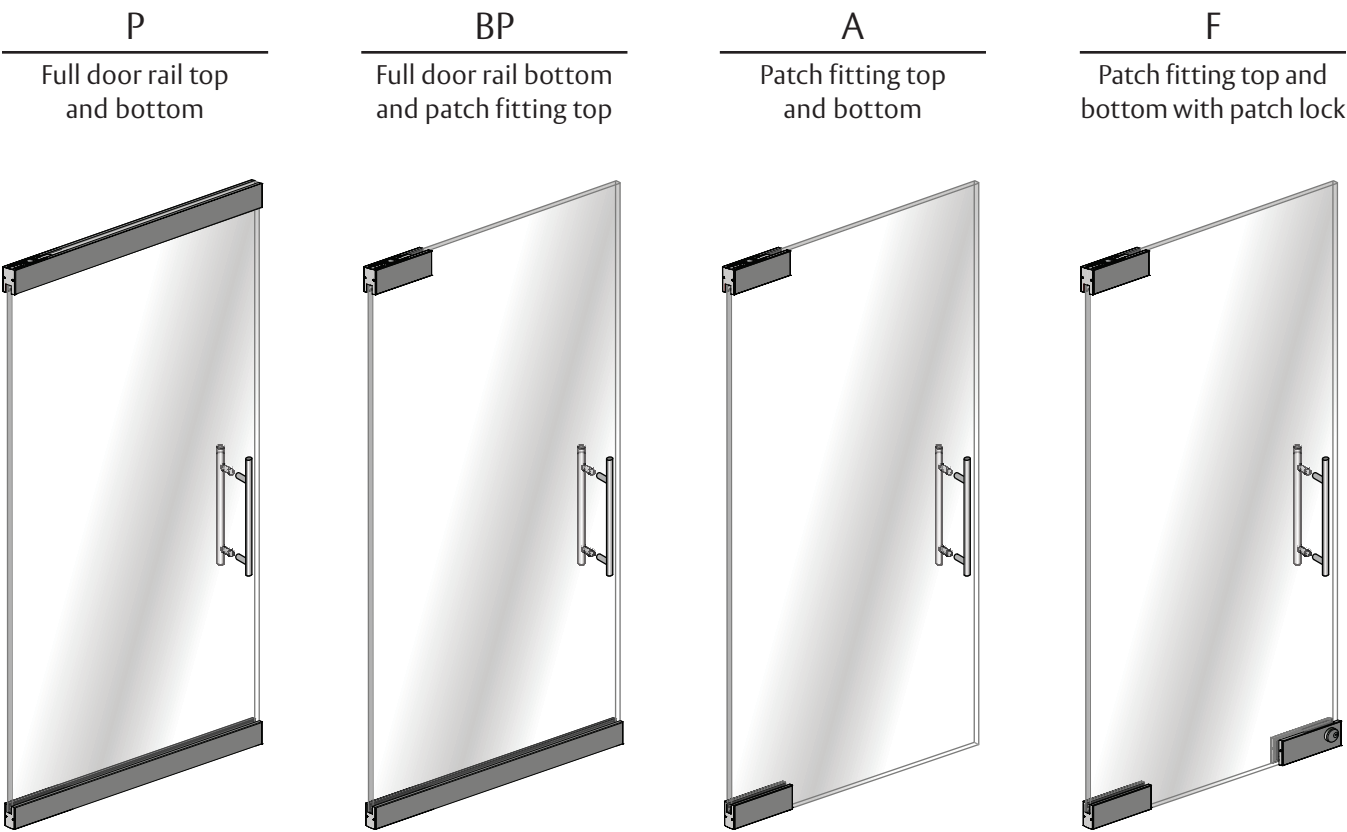
The global leader in  
door opening solutions

Copyright © 2017 ASSA ABLOY Inc. All rights reserved. Reproduction in whole or in part without the express written permission of ASSA ABLOY Inc. is prohibited.

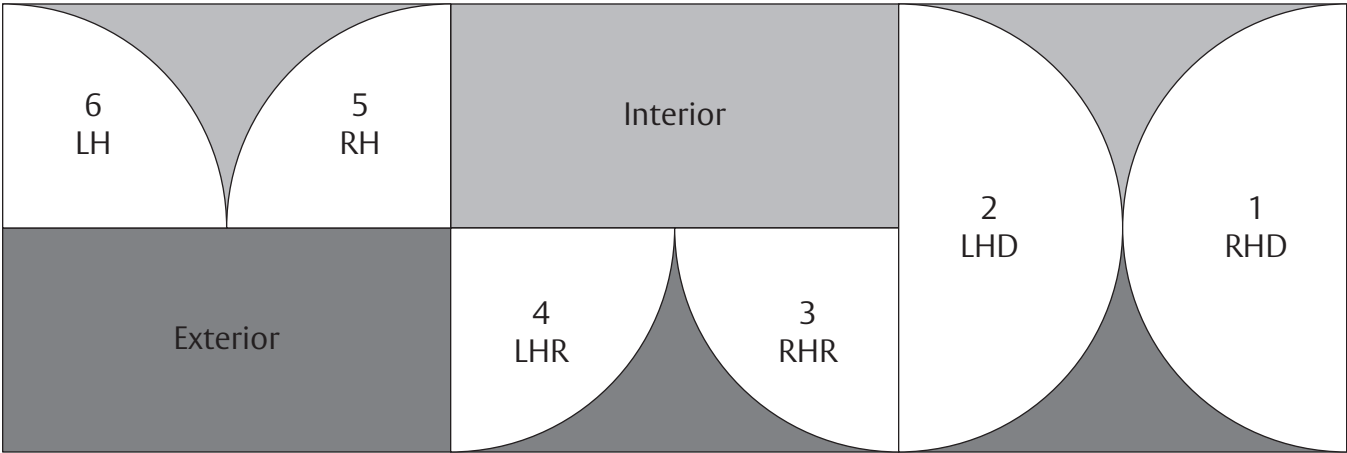


# Glass Door Styles and Handing

There are four basic configurations of glass doors as established by the Glass Association of North America (GANA). For the available variations of each style, refer to the Glass Door Configuration section.



# Door Handing and Swing



**ASSA ABLOY**



# Sustainability

Sustainability is the natural translation of ASSA ABLOY's Corporate Cornerstones: vision, realism, courage, and ethics. These cornerstones have been central to the Group's development since its creation in 1994. The environment, business ethics, and social responsibility are critical issues and are an integral part of our ASSA ABLOY society. Our unconditional aim is to make sustainability a central part of our business philosophy and culture; and even more importantly, to integrate sustainability into our overall business strategy.



## Daylighting

There are many attributes to a sustainable built environment such as daylighting. Daylighting is the process of bringing natural light and direct sunlight into the a building through windows, skylights and interior glass. Exposure to natural light helps improve occupant health, happiness, productivity, and well-being, while decreasing total building energy costs by almost a third.

## Glass

Glass creates openness in a space. In an office environment, openness promotes happiness, creativity, and communication, which are important aspects of good design. In creating a modern atmosphere, glass never looks old or outdated. Being more durable than most materials, glass has longevity that offers an ideally cost-effective solution. Also, glass applications are easily configured, allowing flexibility in any design. At ASSA ABLOY, we believe good design is more than just tangible; good design is imperceptible.



**ASSA ABLOY**

The global leader in  
door opening solutions



# Door Rails

ASSA ABLOY Door Rails offer ease of installation with dependable quality. These pre-assembled mechanical rails have a variety of fabrication options to create a customized solution that fits any application.



**ASSA ABLOY**

The global leader in  
door opening solutions



# Door Rails

## Features

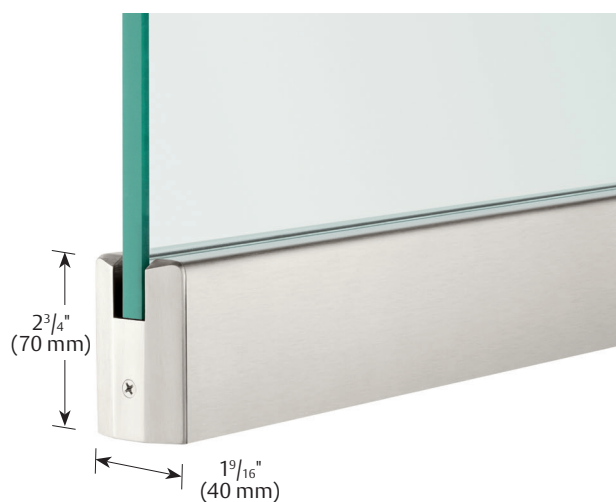
- Dry glaze pre-assembled mechanical rails
- One-piece compression system for easy, fast installation
- Tested in a variety of simulated and real-life scenarios to ensure holding power
- Matching sidelite rails offered
- Precision, custom fabrication for compatible hardware
- No additional charge for non-standard lengths
- Locking option available on most configurations
  - Lock body installed; cylinder, thumbturn, and dustproof strike ordered separately
- Adjustable blocking for standard hardware provides left to right field alignment
- 4" tapered 10" square door rails meet ADA requirements

## Specifications

- Rail Options:**
- (B) - bottom rail
  - (T) - top rail
- Rail Lengths:**
- 35<sup>3</sup>/<sub>4</sub>" Standard - single door
  - 35<sup>13</sup>/<sub>16</sub>" Standard - double door
  - Custom lengths available
- Door Thickness:** 3<sup>3</sup>/<sub>8</sub>", 1<sup>1</sup>/<sub>2</sub>", and 9<sup>9</sup>/<sub>16</sub>"
- Material:**
- Aluminum body
  - Bright or satin stainless steel cladding
- Finishes:** US32D/630, US32/629, US28/628, 314

## Door Rail Styles

### Square 2<sup>3</sup>/<sub>4</sub>" Rail (DRS-275)



## Square 2<sup>3</sup>/<sub>4</sub>" Rail Compatible Parts

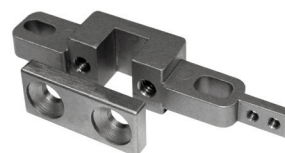
### Floor Closer/Pivot Insert (DRC-275)



### Top Pivot Insert (DRP-275)



### Overhead Closer Insert (DOHC-275)

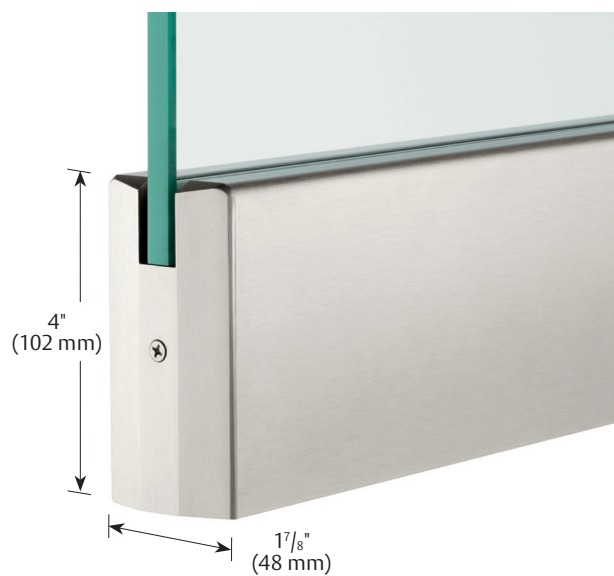


**ASSA ABLOY**

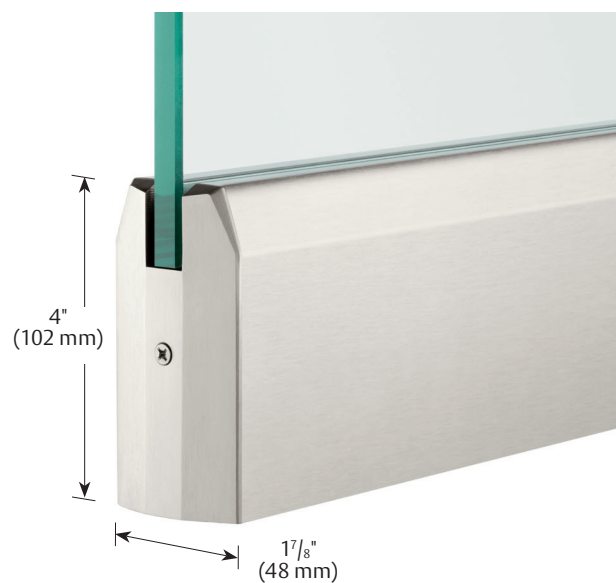
The global leader in  
door opening solutions



Square 4" Rail (DRS-4)



Tapered 4" Rail (DRT-4)



Square 6" Rail (DRS-6)



Square 10" Rail (DRS-10)

**ASSA ABLOY**



## Door Rail Compatible Parts

(For 4", 6" and 10" rails)

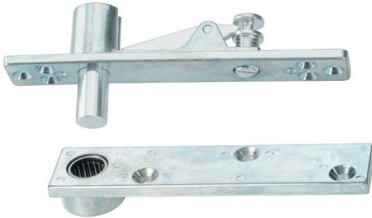
Adjustable End Load Bottom Pivot (PV-ENDLOAD)



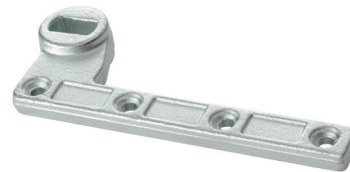
Floor Closer Arm (FC-6275/6280-ARM)



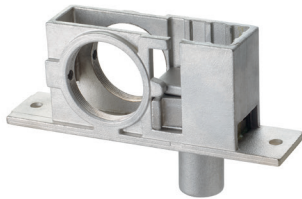
Walking Beam Pivot (PV-WALKBEAM)



Offset Floor Closer Arm (FC-6275/6280-OFFARM)



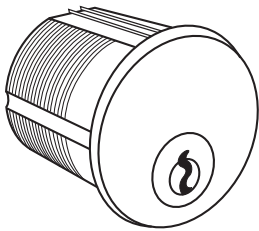
Bottom Door Rail Lock (DR-BTMLOCK)



End Load Overhead Closer Arm (OHC-609-ARM)



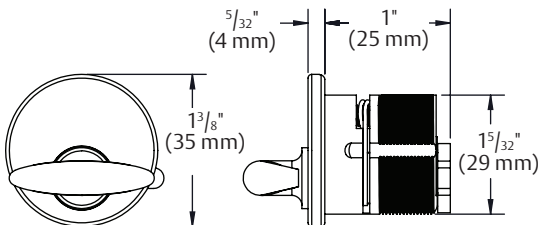
1" Cylinder (DR-LOCKCYL)



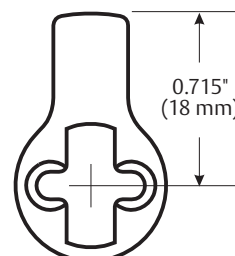
Dust Proof Strike (570)



Thumbturn (DR-LOCKTT)



Cylinder Cam

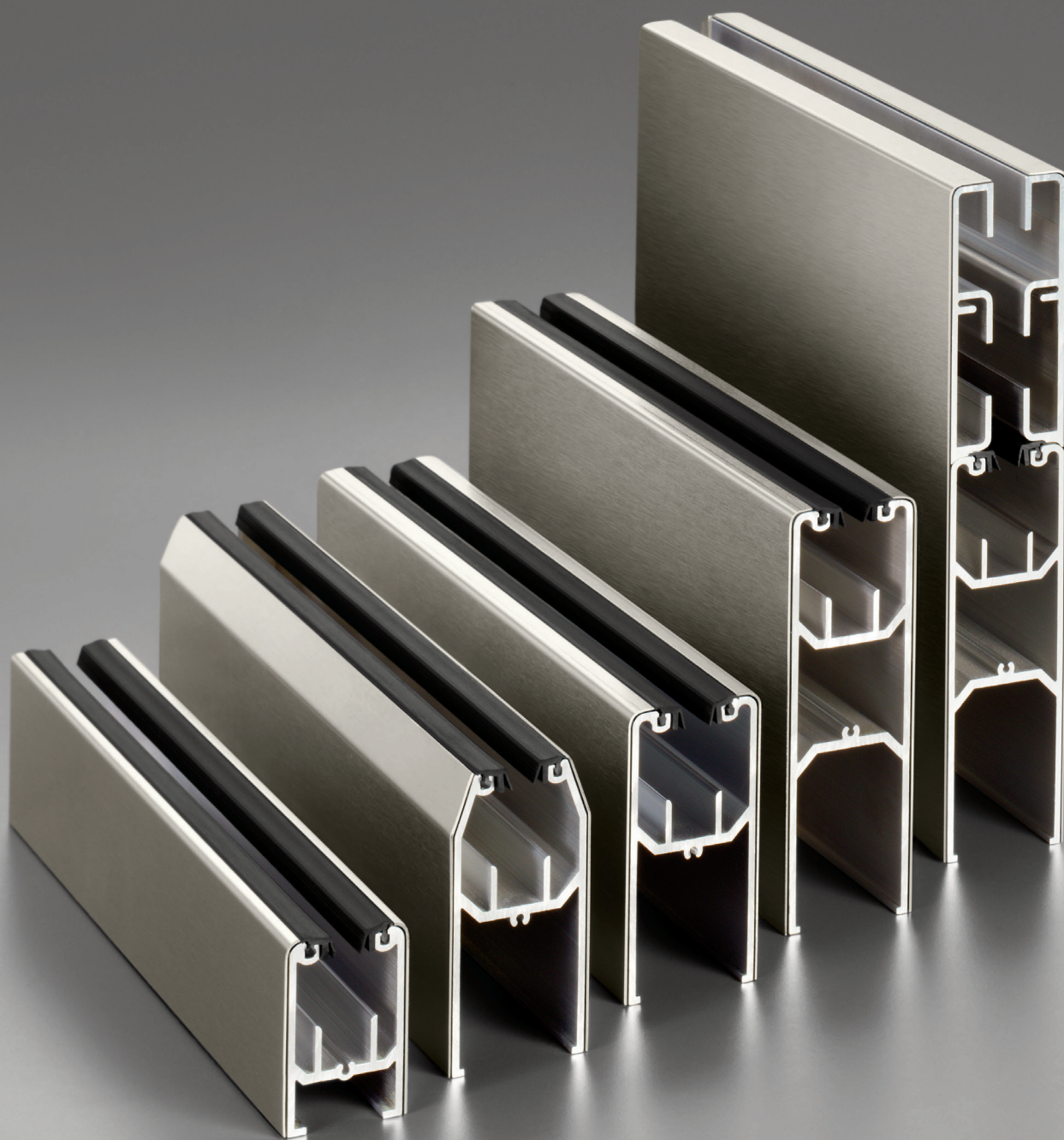


**ASSA ABLOY**

The global leader in  
door opening solutions

# Sidelite Glazing Hardware

Sidelite Rails and U-Channels are designed to preserve the clean, modern appearance of glass walls and sidelites. ASSA ABLOY offers an assortment of sizes in aluminum and stainless steel finishes.



**ASSA ABLOY**

Copyright © 2017 ASSA ABLOY Inc. All rights reserved. Reproduction in whole or in part without the express written permission of ASSA ABLOY Inc. is prohibited.

The global leader in  
door opening solutions



# Sidelite Rails

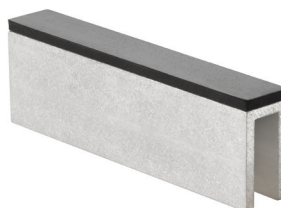
Sidelite Rails maintain a seamless, consistent appearance when used with matching door rails. Available in standard or custom lengths, the dry-glaze installation is fast and efficient.

## Product Features

- Provides aesthetic continuity when used with coordinating door rails
- Standard pre-fit, dry-glaze, black vinyl; gray vinyl option for  $\frac{1}{2}$ " glass only
- Roll-in gasketing alternative (black only)
- Variety of reversible saddles offered for fluctuating clearances and out-of-tolerance openings

## Specifications

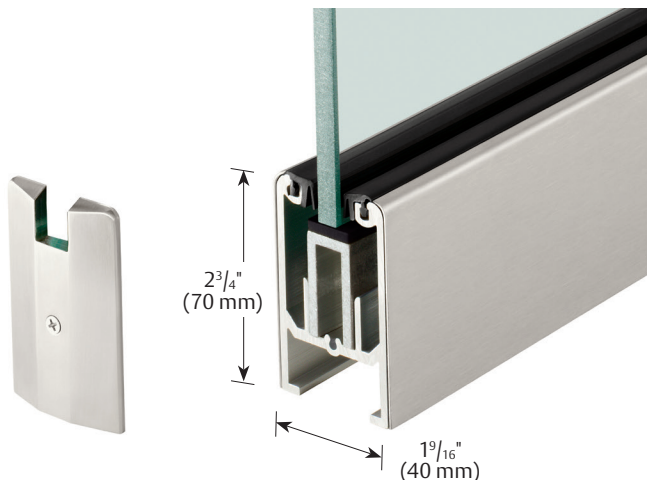
<b>Materials</b>	<ul style="list-style-type: none"> <li>• Aluminum body</li> <li>• Bright or satin stainless steel cladding</li> </ul>
<b>Glass Thickness</b>	$\frac{3}{8}$ ", $\frac{1}{2}$ ", and $\frac{9}{16}$ "
<b>System Components</b>	<ul style="list-style-type: none"> <li>• Cut-to-length or 12' stock lengths available</li> <li>• 4" aluminum setting blocks included with bottom rails</li> <li>• End caps sold separately</li> </ul>
<b>Finishes</b>	US32D/630, US32/629, US28/628, 314



Setting Block

## Sidelite Rail Styles

Square  $2\frac{3}{4}$ " Rail (SRS-275)

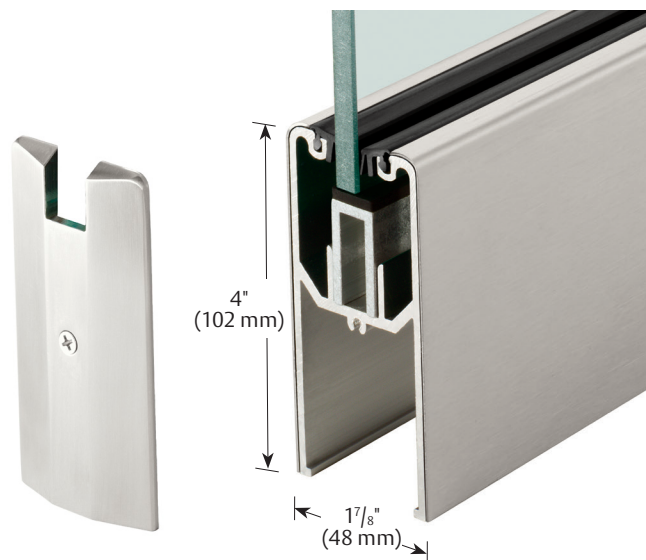


**ASSA ABLOY**

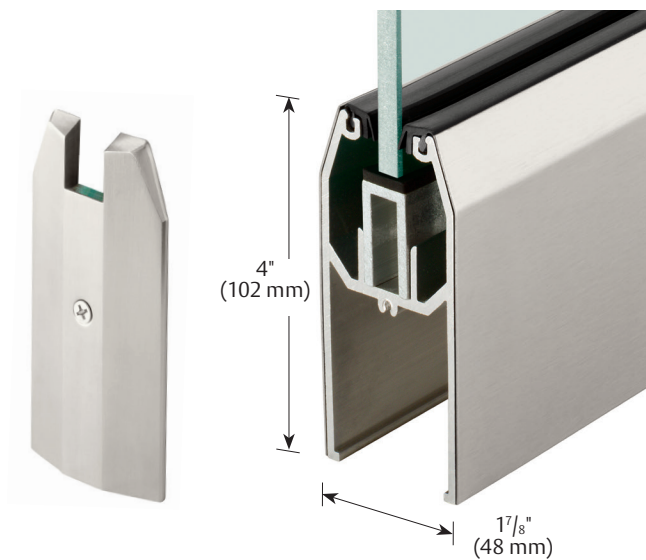
The global leader in  
door opening solutions

## Sidelite Rail Styles (continued)

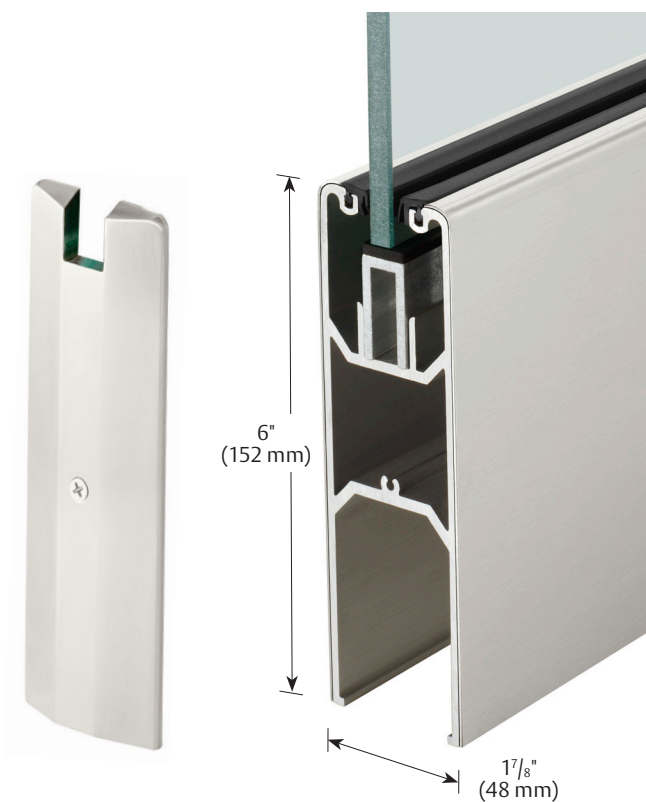
Square 4" Rail (SRS-4)



Tapered 4" Rail (SRT-4)



Square 6" Rail (SRS-6)



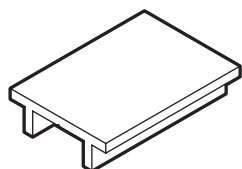
Square 10" Rail (SRS-10)



**ASSA ABLOY**

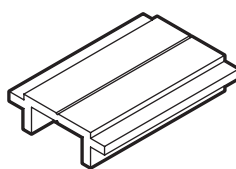


# Saddles



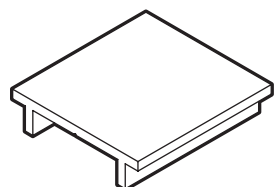
## SAS-1500x125

- $\frac{1}{8}$ " H x  $1\frac{1}{2}$ " W  
(3 mm H x 38 mm W)
- Non-reversible  
 $2\frac{3}{4}$ " (70 mm) rail only



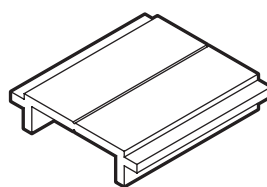
## SAR-1500x188/375

- $\frac{3}{16}$ " and  $\frac{3}{8}$ " H x  $1\frac{1}{2}$ " W  
(5 mm and 10 mm H x 38 mm W)
- Reversible  
 $2\frac{3}{4}$ " (70 mm) rail only



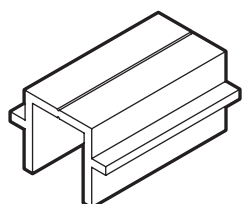
## SAS-1875x125

- $\frac{1}{8}$ " H x  $1\frac{7}{8}$ " W  
(3 mm H x 48 mm W)
- Non-reversible



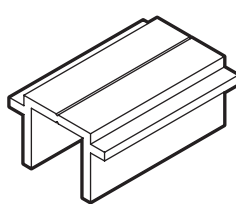
## SAR-1875x188/375

- $\frac{3}{16}$ " and  $\frac{3}{8}$ " H x  $1\frac{7}{8}$ " W  
(5 mm and 10 mm H x 48 mm W)
- Reversible



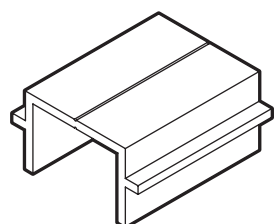
## SAS-1500x500/625

- $\frac{1}{2}$ " and  $\frac{5}{8}$ " H x  $1\frac{1}{2}$ " W  
(13 mm and 16 mm H x 38 mm W)
- Reversible  
 $2\frac{3}{4}$ " (70 mm) rail only



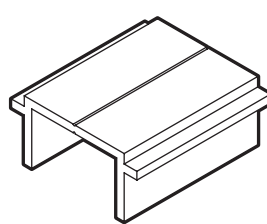
## SAR-1500x250/750

- $\frac{1}{4}$ " and  $\frac{3}{4}$ " H x  $1\frac{1}{2}$ " W  
(6 mm and 19 mm H x 38 mm W)
- Reversible  
 $2\frac{3}{4}$ " (70 mm) rail only



## SAS-1875x500/625

- $\frac{1}{2}$ " and  $\frac{5}{8}$ " H x  $1\frac{7}{8}$ " W  
(13 mm and 16 mm H x 48 mm W)
- Reversible



## SAR-1875x250/750

- $\frac{1}{4}$ " and  $\frac{3}{4}$ " H x 2" W  
(6 mm and 19 mm H x 51 mm W)
- Reversible

# Gasketing\*



GD-PREFIT-B  
Pre-fit  $\frac{1}{2}$ " glass



GD-PREFIT-A  
Pre-fit  $\frac{3}{8}$ " glass



GD-ROLLIN-B  
Roll-in for  $\frac{1}{2}$ " glass



GD-WEDGE-B  
Wedge for  $\frac{1}{2}$ " glass  
(not offered on Sidelite Rails)

\*Gasketing options apply to both Sidelite Rails and U-Channels.

# ASSA ABLOY

The global leader in  
door opening solutions

Copyright © 2017 ASSA ABLOY Inc. All rights reserved. Reproduction in whole or in part without the express written permission of ASSA ABLOY Inc. is prohibited.

# U-Channels

U-channels secure glass into position and create a continuous, minimal profile that allows the maximum amount of natural light to enter the room.

## Product Features

- Easy and efficient to install
- Lengths:
  - 12' stock or custom
  - Anodized: 90" maximum
  - Hat Channel: 10' white powder coat only
- Standard pre-fit, dry-glaze, black vinyl; gray vinyl option for  $\frac{1}{2}$ " glass only
- Wet/dry glaze channel (gasketing not standard)
  - Wedge gasket available
  - Can be used with silicone
  - End caps sold separately

## Specifications

**Materials**

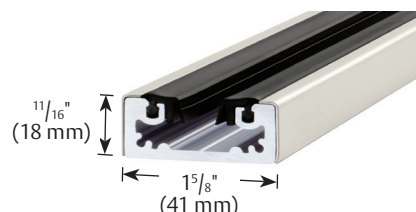
- Aluminum body
- Bright or satin stainless steel cladding

**Glass Thickness**  $\frac{3}{8}$ ",  $\frac{1}{2}$ ", and  $\frac{9}{16}$ "

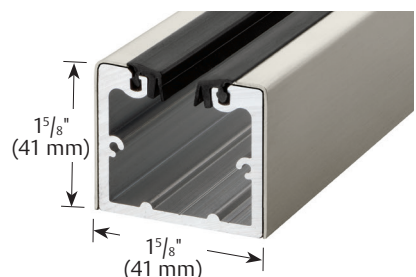
**Finishes** US32D/630, US32/629, US28/628, 314

## U-Channel Styles

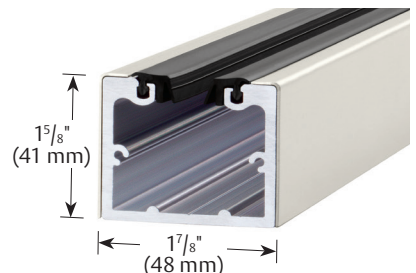
**Dry U-Channels**  
UCD-0687x1625



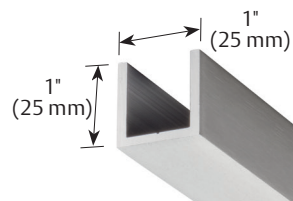
UCD-1625x1625



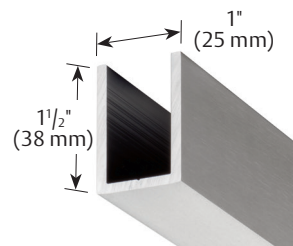
UCD-1625x1875



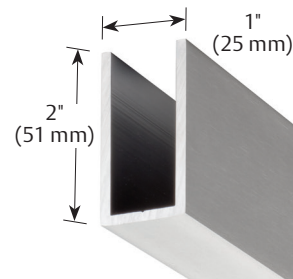
**Wet/Dry U-Channels**  
UWD-1000x1000



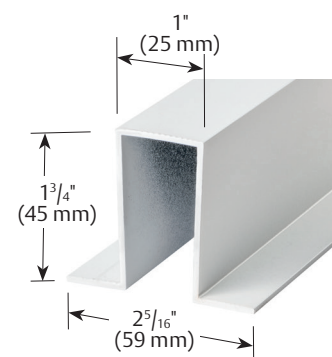
UWD-1500x1000



UWD-2000x1000



UWD-HAT-1750x1000



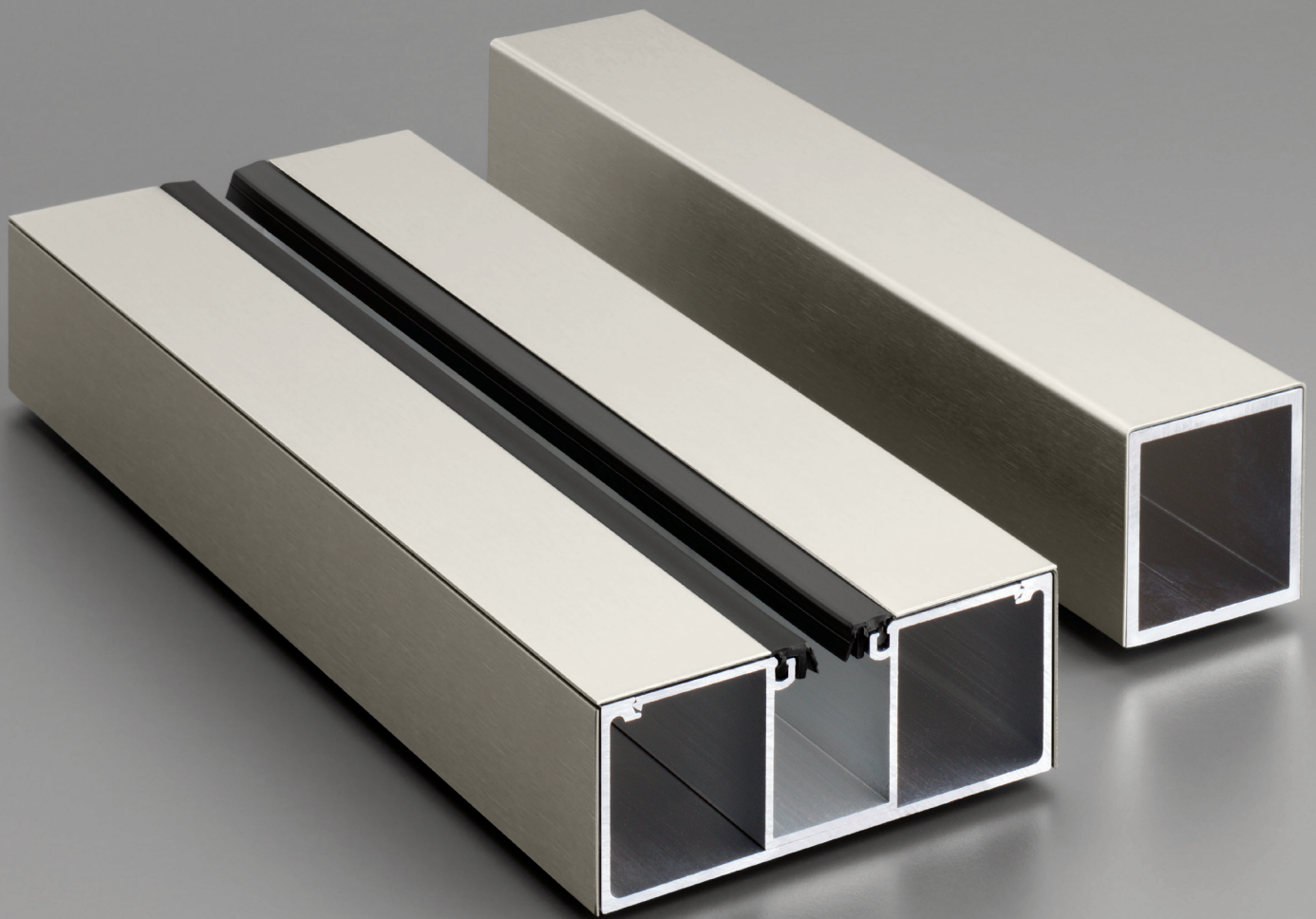
**ASSA ABLOY**

The global leader in  
door opening solutions



# Headers

ASSA ABLOY's state-of-the-art equipment and skilled, in-house engineering services, quickly and effectively produce intricate header configurations to support any glass door solution.



**ASSA ABLOY**

The global leader in  
door opening solutions

Copyright © 2017 ASSA ABLOY Inc. All rights reserved. Reproduction in whole or in part without the express written permission of ASSA ABLOY Inc. is prohibited.

# Headers

Headers conceal hardware for glass door systems. They house a range of products such as closers, strikes, mag locks, and pivots. Our Glass Solutions program offers a collection of solid, floating, and two-piece header systems for doors and sidelites.

## Product Features

- Two-piece, snap-fit headers for standard hardware applications
  - No exposed fasteners provide easy access while maintaining clean aesthetics
- Solid tube headers fabricated for complex hardware applications
- Floating headers available
- All hardware mounting brackets and clips come pre-installed
- All headers prepped by machining centers
- Vinyl gasketing for all sidelite applications
- No additional charge for non-standard lengths

## Finishes

- US32D/630, US32/629, US28/628, 314

## Header Types

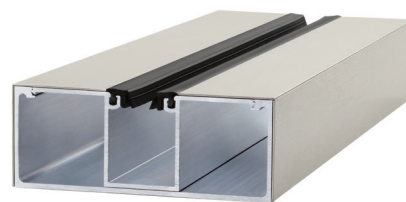
Overhead Closer Header



Pivot Header

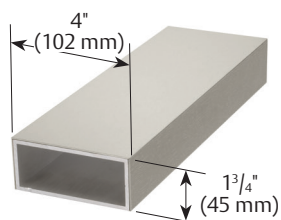


Sidelite Header

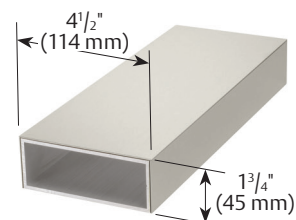


## Solid Headers

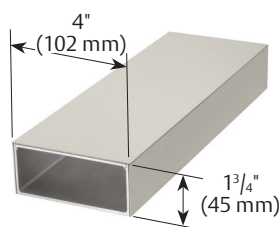
HDS-1750x4000



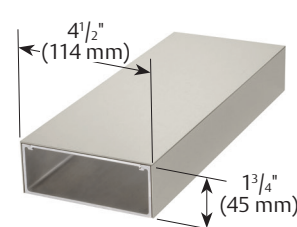
HDS-1750x4500



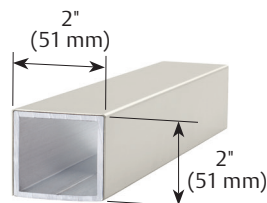
HDR-1750x4000



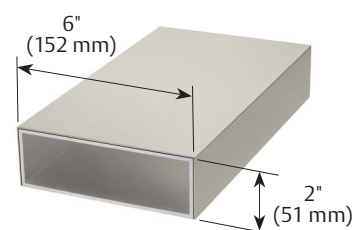
HDR-1750x4500



HDS-2000x2000



HDS-2000x6000



## Pivot, Overhead Closer and Sidelite Headers

**ASSA ABLOY**



# Patch Fittings

ASSA ABLOY provides patch fittings for doors, sidelites, and transoms, offering designers and architects a complete selection of products for most frameless glass configurations.



**ASSA ABLOY**

The global leader in  
door opening solutions

Copyright © 2017 ASSA ABLOY Inc. All rights reserved. Reproduction in whole or in part without the express written permission of ASSA ABLOY Inc. is prohibited.

# Patch Fittings

With a maximum door weight of 300 lbs., our patch fitting design is manufactured to meet the industry standard and deliver the ultimate in strength and reliability.

## Product Features

- Manufactured for industry standard dimensions
  - Standard glass prep
  - $2\frac{3}{4}$ " pivot centerline
- Snap-on cover
- Bottom patch lock available
  - 5-Pin cylinder, 1" length
- Used with monolithic or laminated glass
- Synthetic gasketing provides ultimate durability

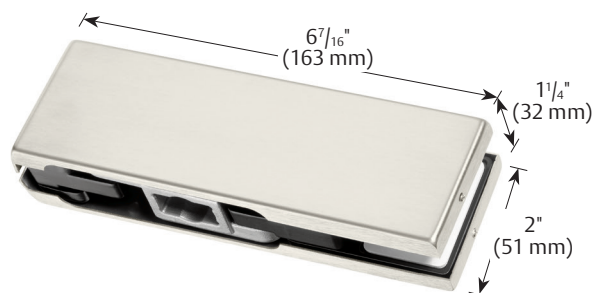
## Specifications

<b>Maximum Door Weight:</b>	300 lbs. (42" maximum door width)
<b>Door Thickness:</b>	$\frac{3}{8}$ " to $\frac{9}{16}$ "
<b>Material:</b>	<ul style="list-style-type: none"> <li>• Stainless steel inserts</li> <li>• Aluminum body</li> <li>• Aluminum or stainless steel cover</li> </ul>
<b>Finishes:</b>	US32D/630, US32/629, US28/628, 314

## Door Patch Fittings

### Bottom Patch (PFD-10)

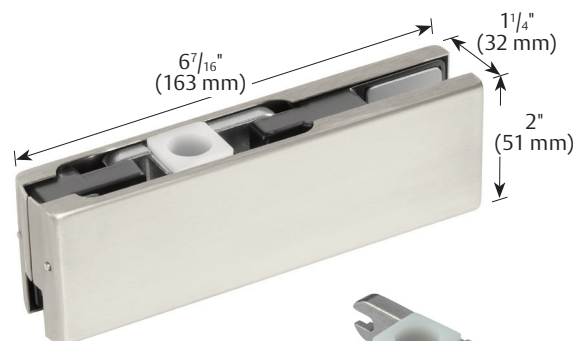
- Floor Closer/Pivot Insert (included) (PFD-10INS)
- Functions with 6275/6280 Tapered Floor Closer Spindle



PFD-10INS

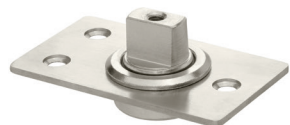
### Top Patch (PFD-20)

- Top Pivot Insert (included) (PFD-20PIVINS)



PFD-20PIVINS

## Compatible Parts



Floor Mount Pivot (PF-FM-PIVOT)



Adjustable Pivot (PF-ADJ-PIV)

## Compatible Parts



Surface Mount Pivot (PF-SM-PIVOT)



Walking Beam Pivot (PV-WALKBEAM)

**ASSA ABLOY**

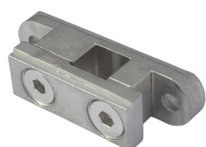
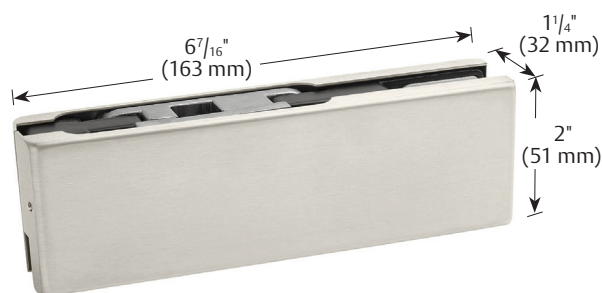
The global leader in  
door opening solutions



## Door Patch Fittings (continued)

### Top Patch (PFD-22)

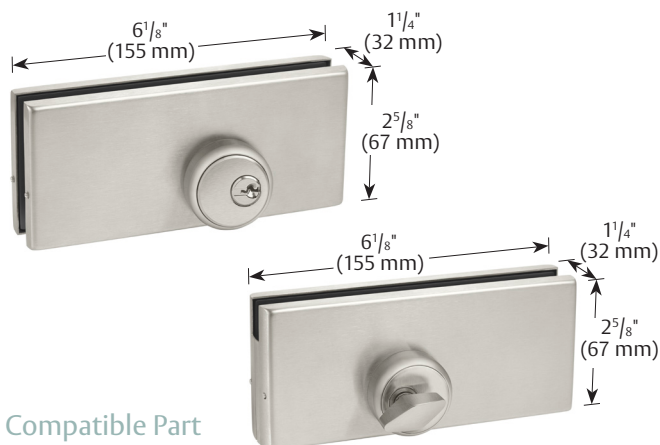
- Overhead Closer Insert (included) (PFD-22OHCINS)



PFD-22OHCINC

### Patch Lock (PFD-100)

- Round Bolt Dead Bolt Lock
- Available with 1" cylinder and thumbturn



### Compatible Part

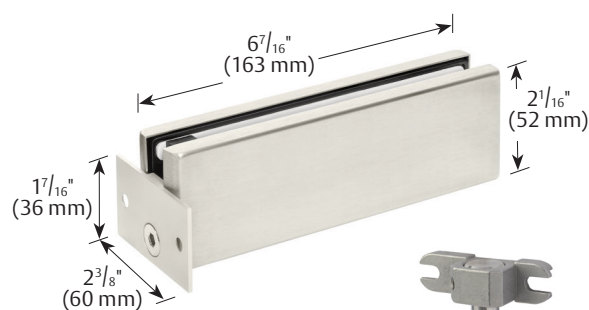


Dust Proof Strike (570)

## Transom Patch Fittings

- Pivot Insert (included) (PFT-34/40/41-PIVINS)
- Compatible Parts: PFD-20BC

### Transom Patch with Wall Bracket (PFT-34)



Pivot Insert  
(PFT-34/40/41-PIVINS)

### Optional Inserts



Blank Insert  
(PFT-34/40/41-BLANKINS)

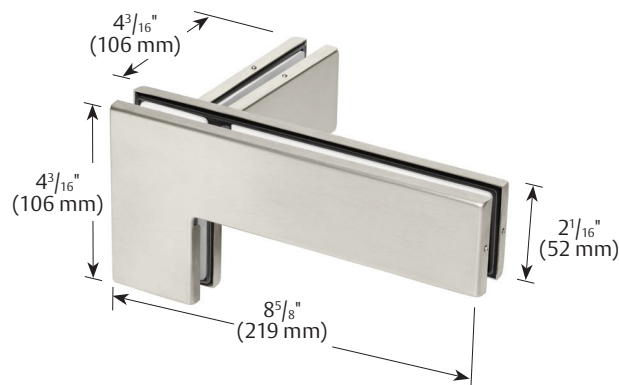


Stop Insert  
(PFT-34/40/41-STOPINS)

### Sidelite Transom Patch (PFT-40)



### Sidelite Transom Fin Patch (PFT-41)(Handed)



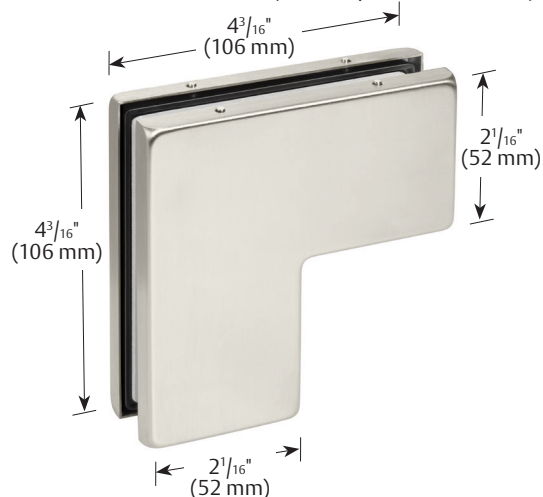
**ASSA ABLOY**

The global leader in  
door opening solutions

## Transom Patch Fittings (continued)

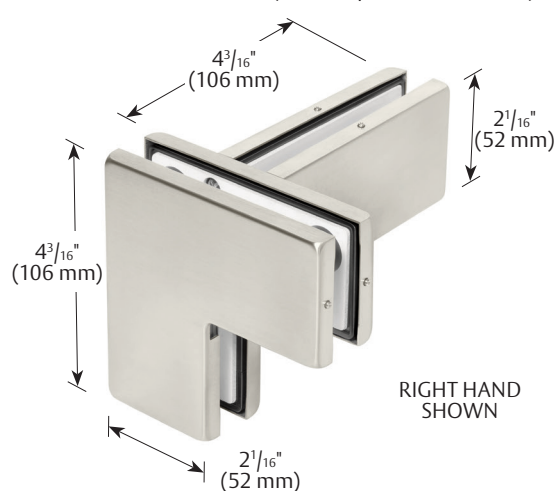
### Sidelite Transom Patch (PFT-60)

- Included: Stop Insert (PFT-60/70-STOPTAB)  
Blank Insert (PFT-60/70-BLANKTAB)

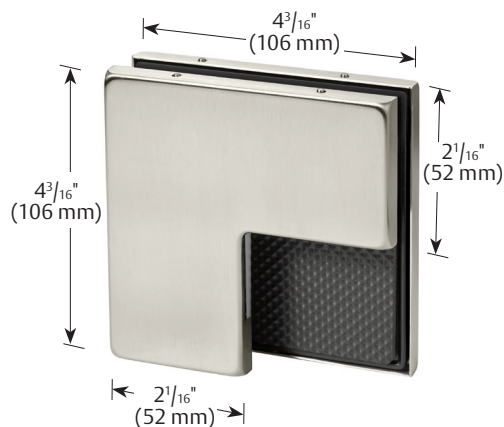


### Sidelite Transom Fin Patch (PFT-61) (Handed)

- Included: Stop Insert (PFT-60/70-STOPTAB)  
Blank Insert (PFT-60/70-BLANKTAB)

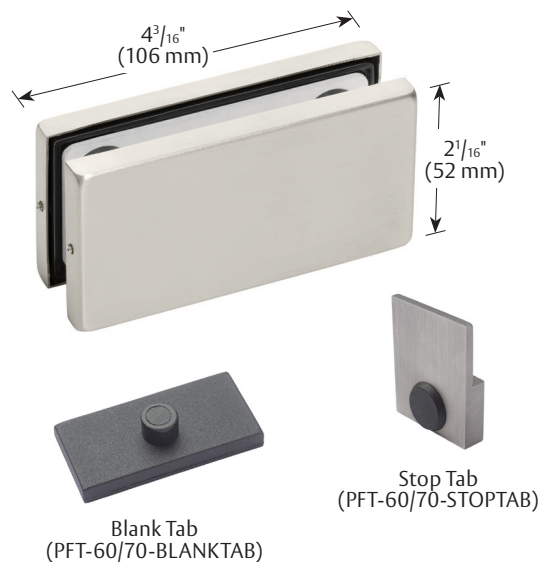


### Sidelite Transom Stop Patch (PFT-62)

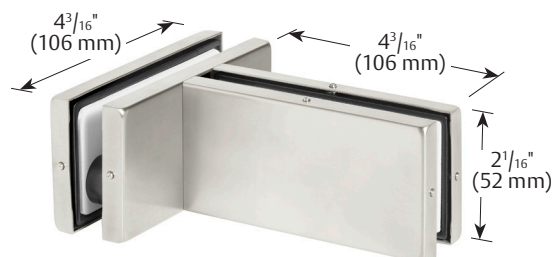


### Transom Stop Patch (PFT-70)

- Included: Stop Insert (PFT-60/70-STOPTAB)  
Blank Insert (PFT-60/70-BLANKTAB)



### Transom Connector Fin Patch (PFT-71)

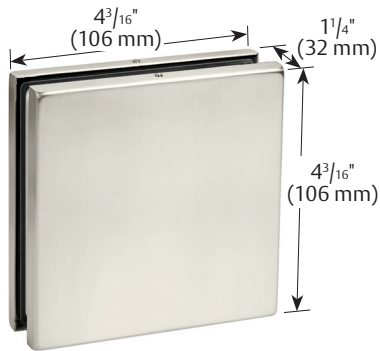


**ASSA ABLOY**

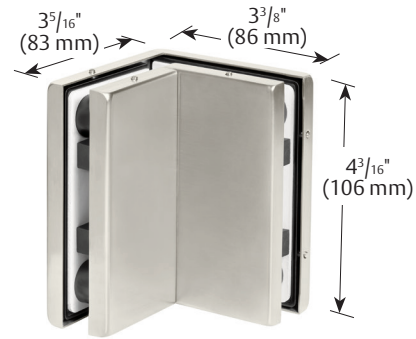


## Sidelite Patch Fittings

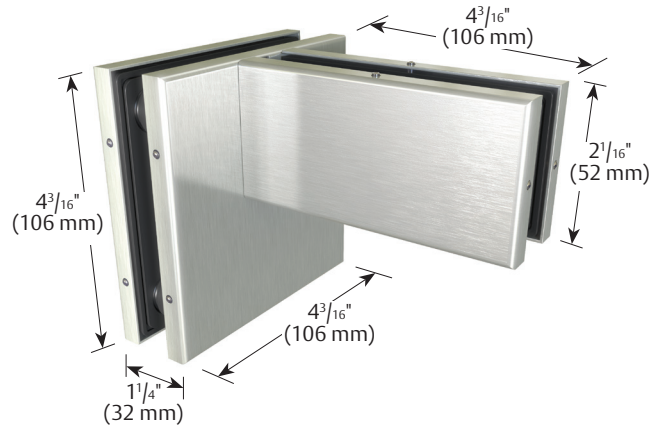
Sidelite Connector Patch (PFS-80)



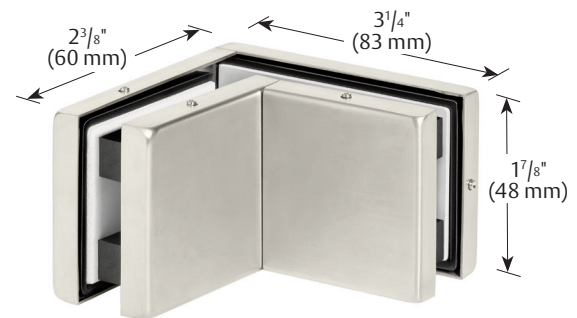
Sidelite 90° Angle Patch (PFA-90)



Sidelite Fin Patch (PFS-81)



Sidelite 90° Short Angle Patch (PFA-90-SH)



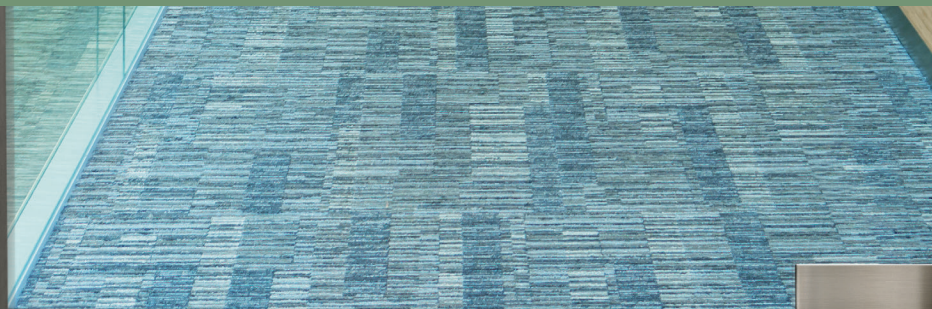
**ASSA ABLOY**

The global leader in  
door opening solutions



# Panic Devices

Combine safety and elegance with ASSA ABLOY Glass Panic Devices. The engraved push area and boundary grooves make exit doors stand out in a crowd. The panic device has keyed and non-keyed functions, six standard exterior pull options, and a selection of finishes, providing customizable design. Whether choosing a manual or electric strike, this line provides beauty, security, and peace of mind.



**ASSA ABLOY**



# Panic Devices

## Product Features

- Top latching panic device with easy align security latch
- Engraved latch lines ensure proper engagement with strike
- Post mount design matches Rockwood architectural pulls
- Keyed and non-keyed options
- Six standard exterior pull options
- Dogging feature
- Engraved push area and boundary grooves allow for enhanced visibility and tactility
- Less than 5 lbs. of force to activate device

## Specifications

<b>Panic Device:</b>	• PDU-8000
<b>Functions</b>	<ul style="list-style-type: none"> <li>• Keyed</li> <li>• Passage (dogging standard)</li> </ul>
<b>Glass Thickness</b>	<ul style="list-style-type: none"> <li>• 1/2" to 3/4" thick standard</li> <li>- Non-standard thickness, specify</li> </ul>
<b>Dimensions</b>	Grip diameter: 1 1/4" Vertical: (crash bar to top of tube): <ul style="list-style-type: none"> <li>• 28 1/2" min; 73" max</li> </ul> Horizontal: <ul style="list-style-type: none"> <li>• 15 3/4" min; 48" max</li> </ul> Projection: <ul style="list-style-type: none"> <li>• 2 5/8" Panic side</li> <li>• 3 1/4" Mating pull side</li> </ul>
<b>Materials</b>	Stainless steel
<b>Applications Types</b>	<ul style="list-style-type: none"> <li>• Glass mounted</li> <li>• Rail mounted</li> </ul>
<b>Handing</b>	<ul style="list-style-type: none"> <li>• Right-hand reverse (swing 3)</li> <li>• Left-hand reverse (swing 4)</li> </ul>

<b>Patents, Approvals and Listings</b>	<ul style="list-style-type: none"> <li>• ANSI/BHMA A156.3-2008, Grade 1 Certified (32 and 32D finishes only)</li> <li>• UL305, ULC-S132-07</li> <li>• Meets California Building Code (2013) Sec. 11B-309.4</li> <li>• ADA Compliant</li> <li>• Patents Pending</li> </ul>
--	---

<b>Finishes</b>	US32/629, US32D/630, US32MS*, US32D (device) / US32 (push area) 314E, Stock Powder Coats
-----------------	--

\*MS - MicroShield® Antimicrobial Coating

## Cylinder Options

<b>Code 01</b>	Mortise Cylinder
<b>Code 02</b>	7-pin SFIC Housing w/Construction Core
<b>Code 03</b>	Special Order (keyed alike)
<b>Code 04</b>	Customer Supplied Cylinder
<b>Code 05</b>	Dummy Cylinder Housing
<b>Code 06</b>	Non-Keyed Function (blank escutcheon plate provided)

Sold Through



Authorized Channel Partner  
ASSA ABLOY

**ASSA ABLOY**

The global leader in  
door opening solutions

## Engraved Push Area Finish Options\*

Split finish – 32D device; 32 push area (infill optional)



White paint



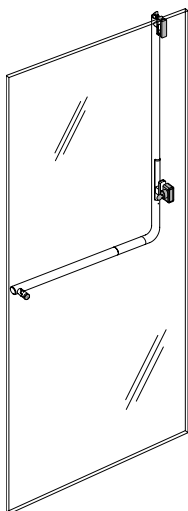
Black paint (standard)



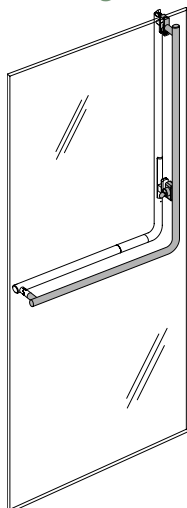
\*For custom colors, contact factory.

## PDU-8000 Exterior Pull Options

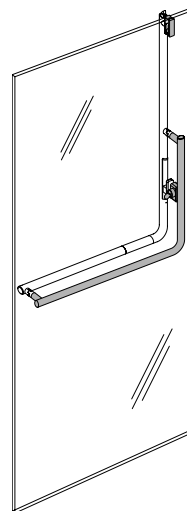
No Mating Pull



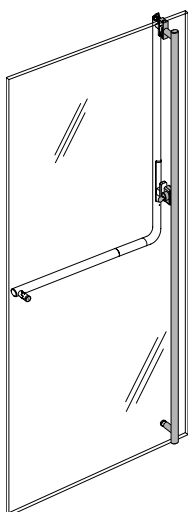
Full-Height L-Shaped Pull (-1)



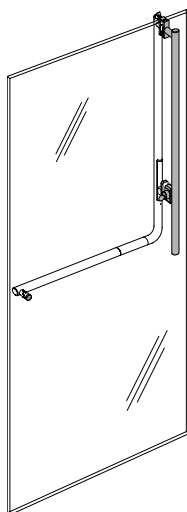
Half-Height L-Shaped Pull (-2)



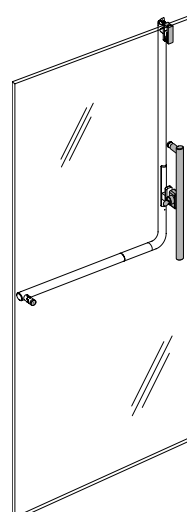
Full-Height Straight Pull (-3)



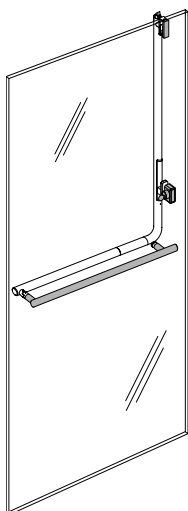
Half-Height Straight Pull (-4)



Short Centered Straight Pull (-5)

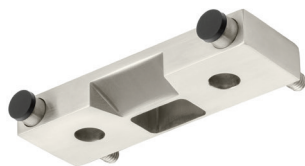


Horizontal Straight Pull (-6)



## Strike Options

Single Manual (MSK-SGL)



Single Electric (ESK-SGL)

- Fail Safe/Fail Secure
- Folger Adam 310-1-3/4



Double Manual (MSK-DBL)



Double Electric (ESK-DBL)

- Fail Safe/Fail Secure
- Folger Adam 310-1-3/4

