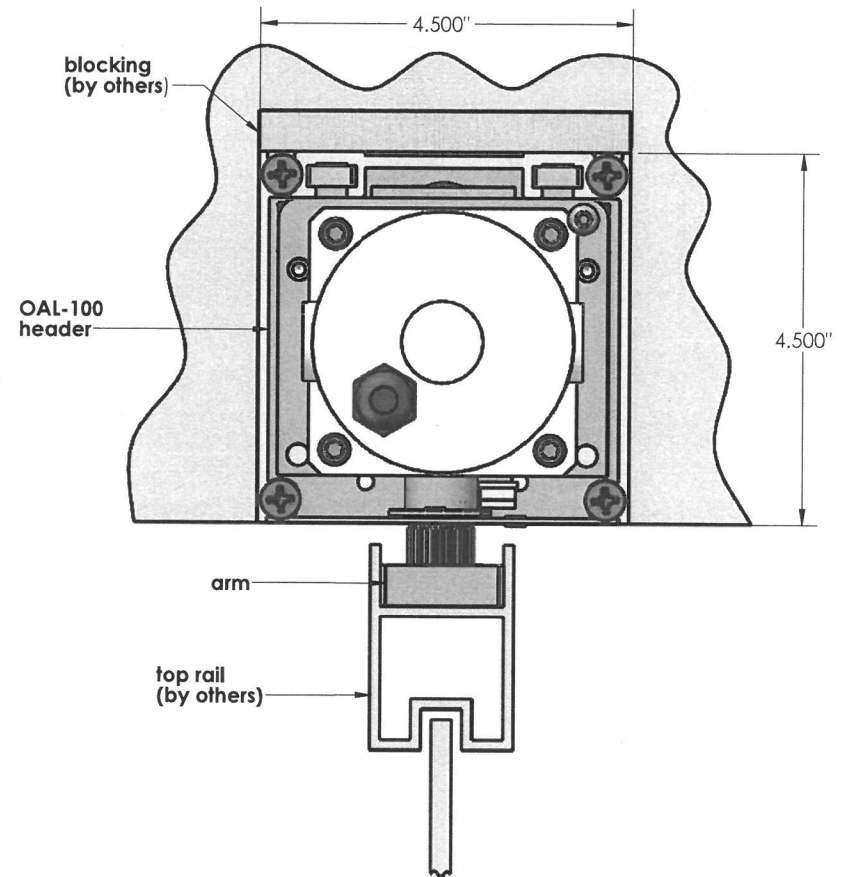
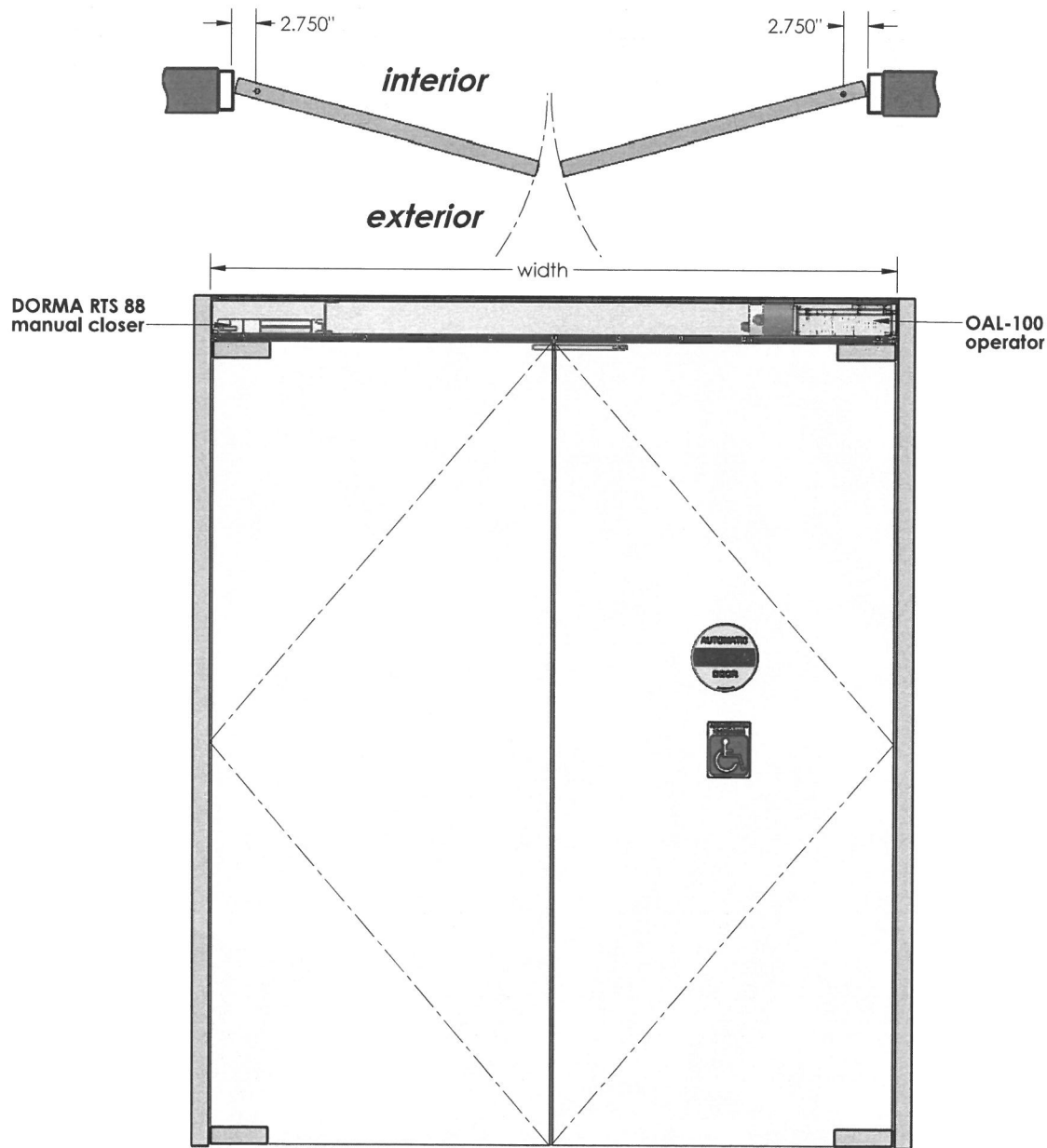


Note:
 "OA-100-CH" is approved by TUV SUD America Inc., conforming to:
 UL Std. 325
 ANSI/BHMA Std. A156.19
 CAN. CSA Std. C22.2 #247
 as manufactured by Omega Automatics
 38" clear opening required to meet ADA requirements Standard
 finishes: Clear Anodize, Dark Bronze, Light Bronze, Custom finishes available



	title center hung glass door	date JAN. 24 2019	file CH-G
--	---------------------------------	----------------------	--------------



note:
 automatic swing door operator shall be
 "OAL-100" CETL USA approved, conforming to:
 UL Std. 325
 ANSI-BHMI Std. A156.19
 CAN. CSA Std. C22.2 #247
 as manufactured by Omega Automatics
 32" clear opening required to meet ADA requirements
 Standard finishes: Clear Anodize, Dark Bronze, Light Bronze
 Custom finishes available



center hung manual auto

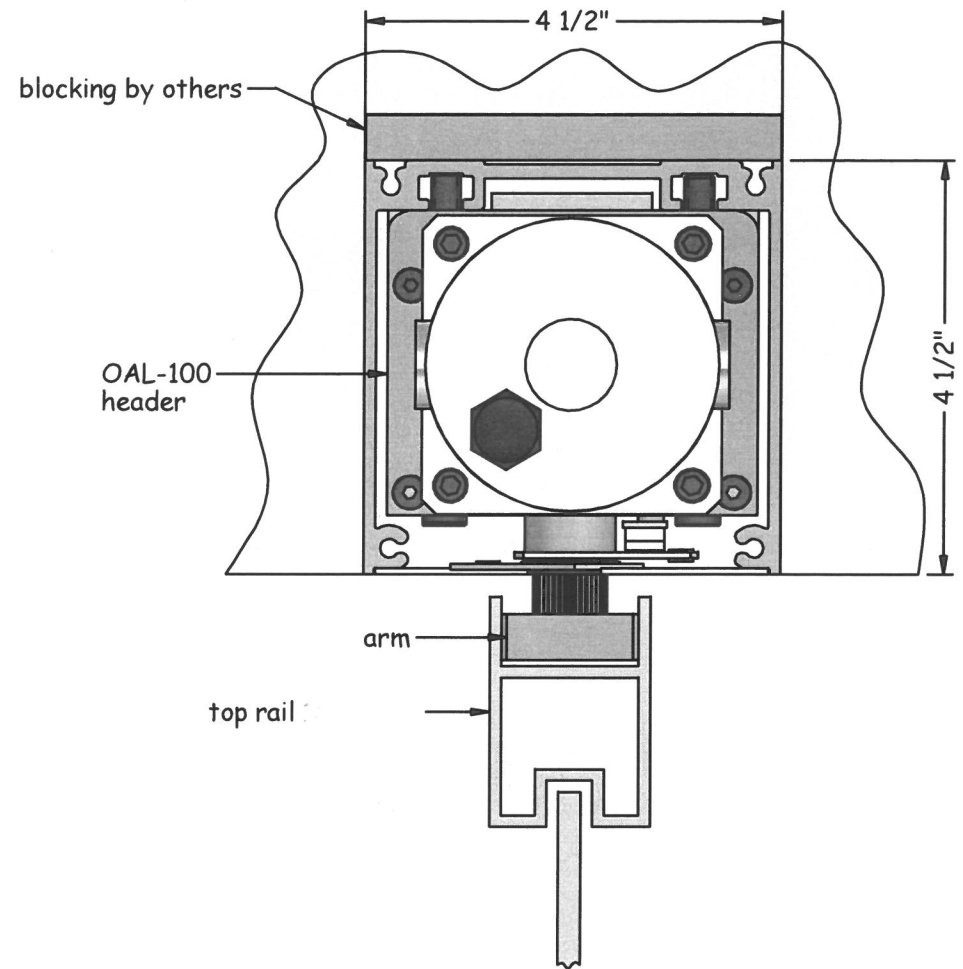
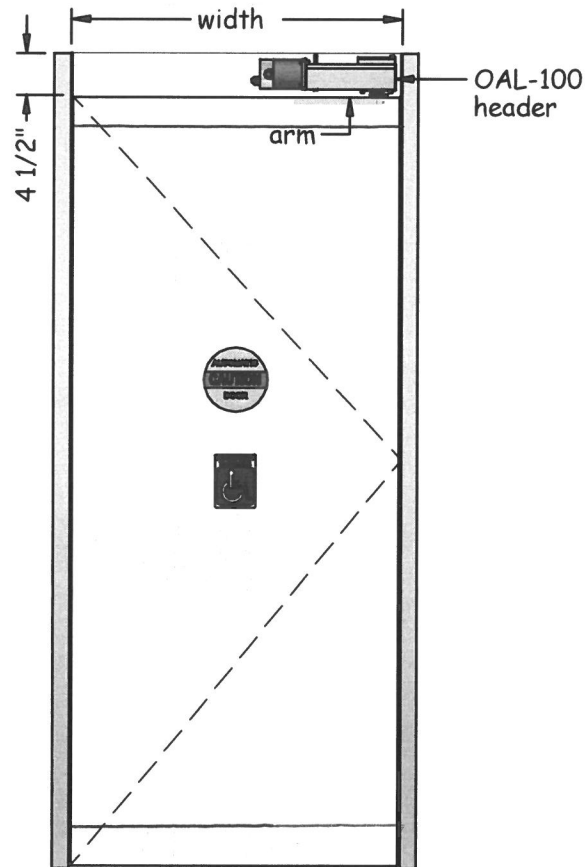
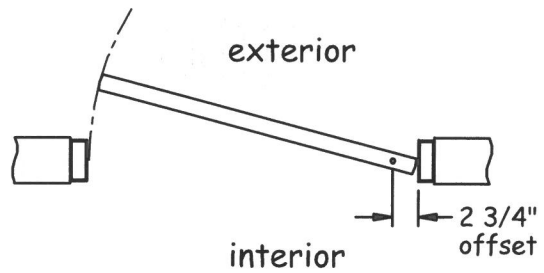
title

CH-MA

date

Jun. 14 2018

file



Note:

"OA-100-CH" is approved by TUV SUD America Inc., conforming to:

UL Std. 325

ANSI/BHMA Std. A156.19

CAN. CSA Std. C22.2 #247

as manufactured by Omega Automatics

38" clear opening required to meet ADA requirements Standard

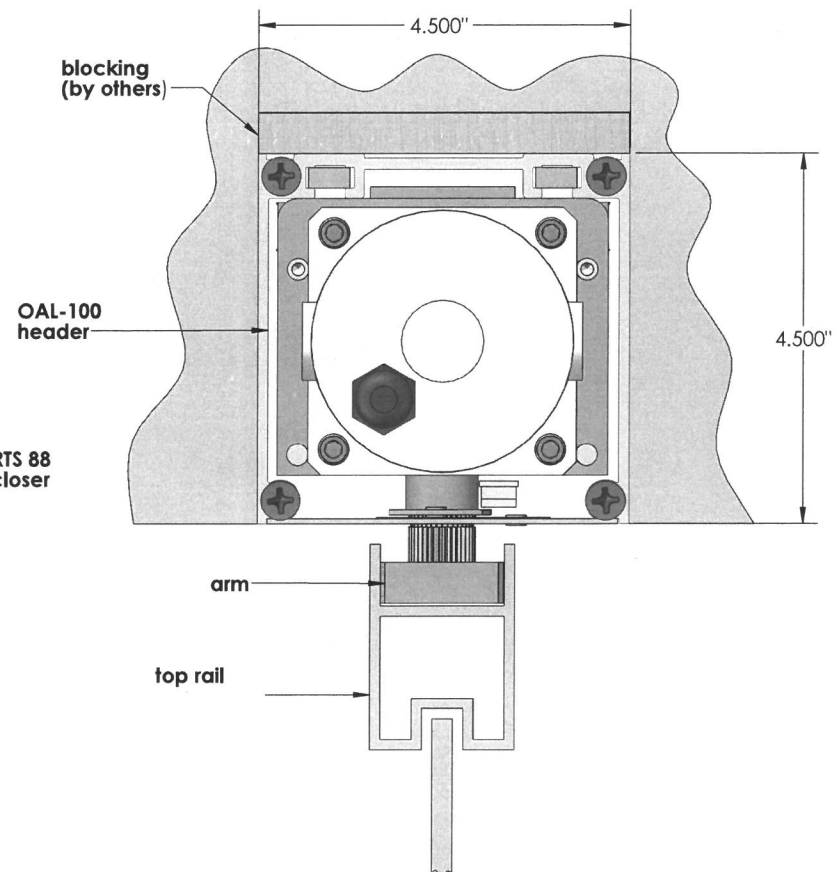
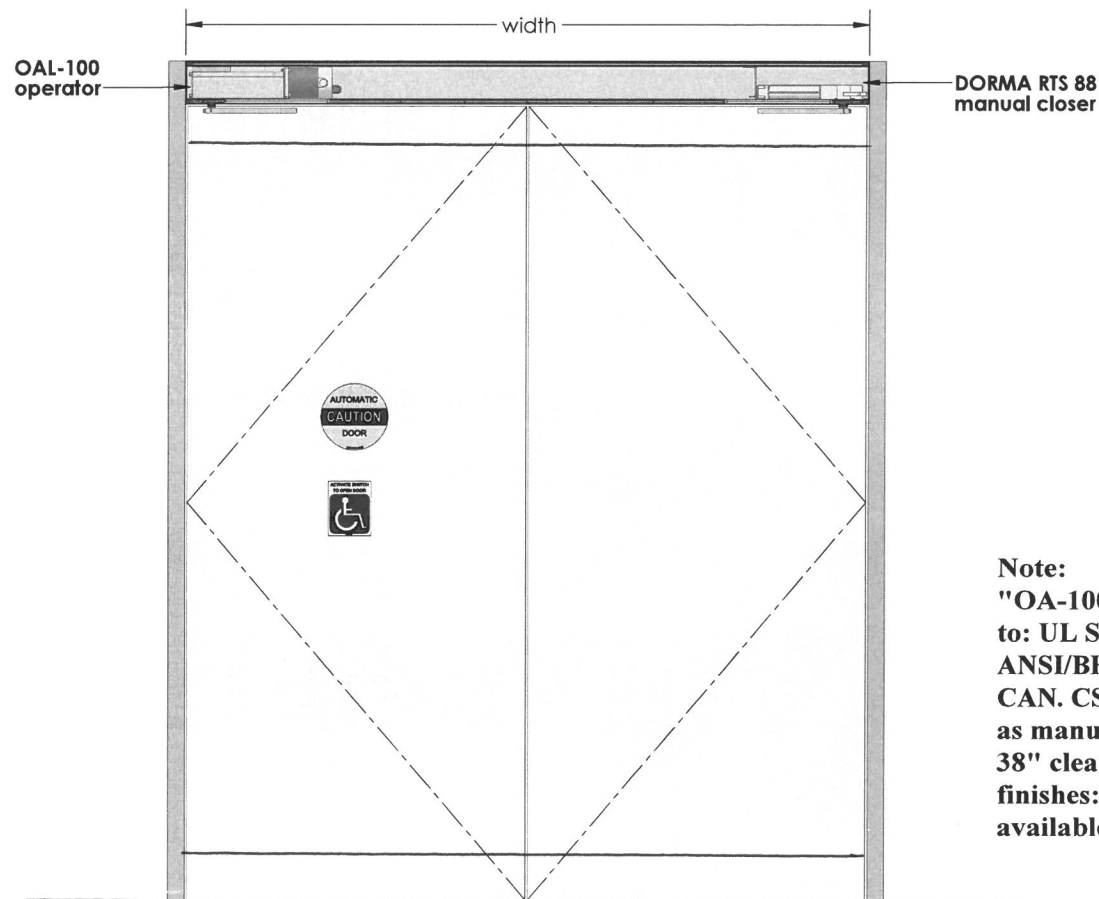
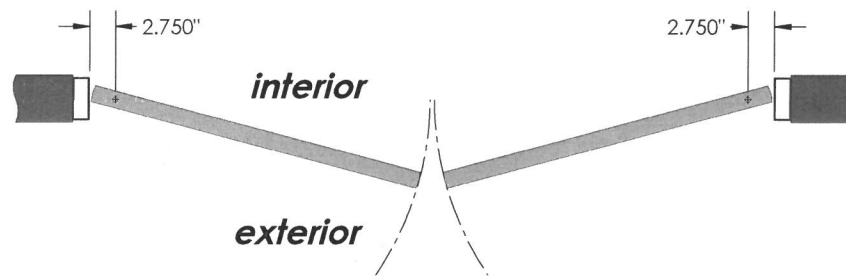
finishes: Clear Anodize, Dark Bronze, Light Bronze, Custom finishes available



title
center hung right

date

file
CH-R



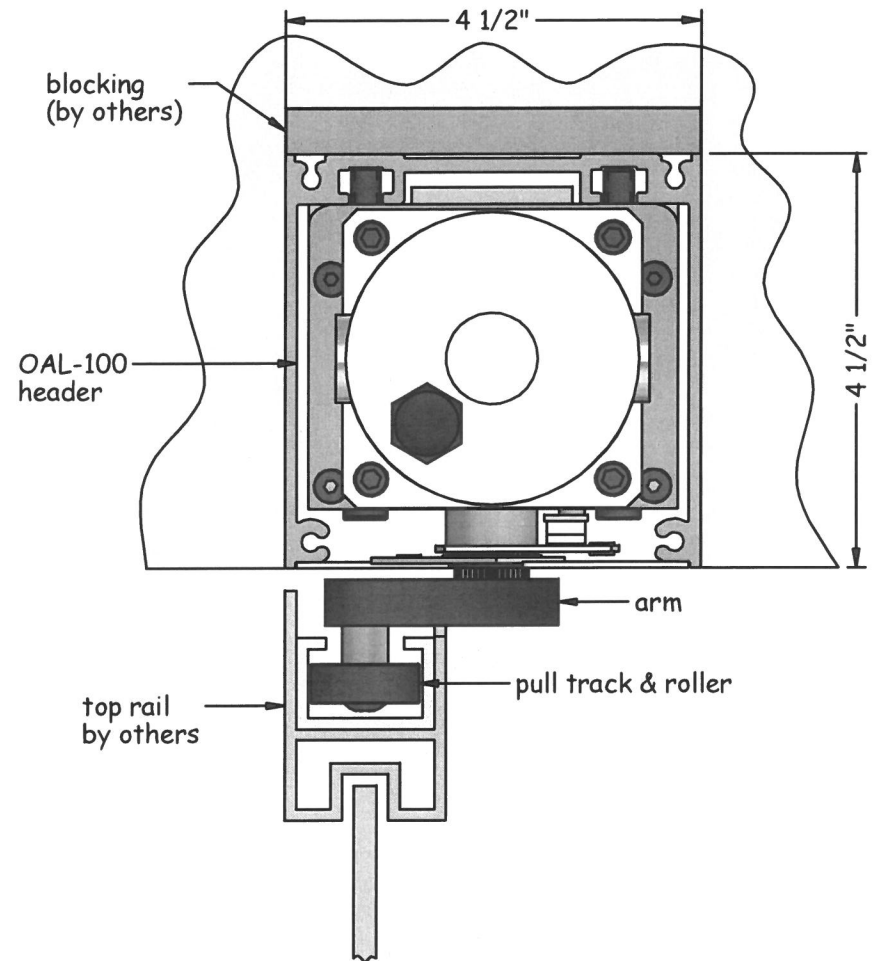
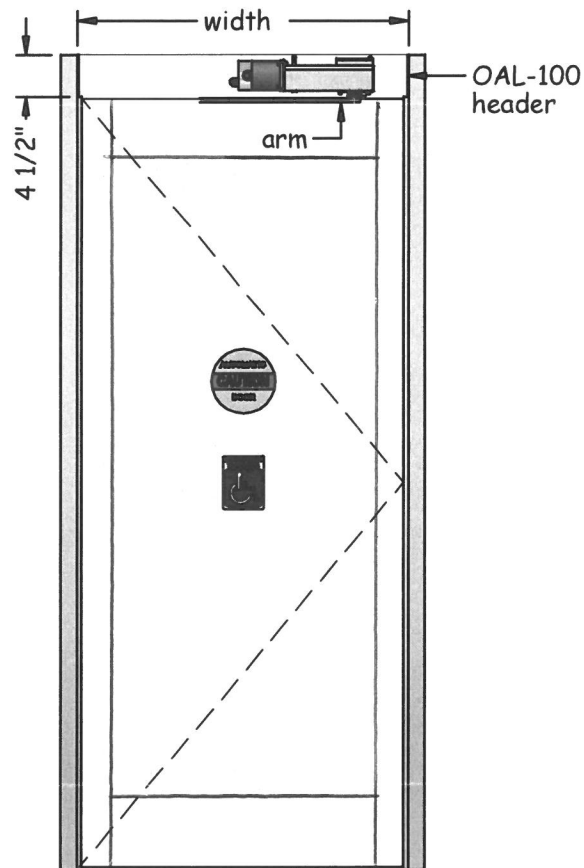
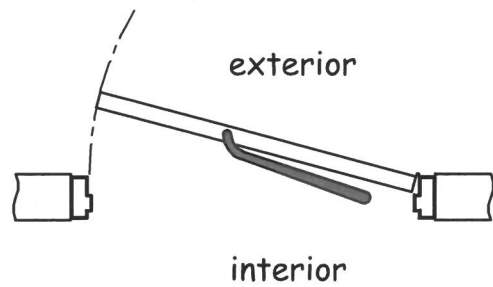
Note:
 "OA-100-CH" is approved by TUV SUD America Inc., conforming
 to: UL Std. 325
 ANSI/BHMA Std. A156.19
 CAN. CSA Std. C22.2 #247
 as manufactured by Omega Automatics
 38" clear opening required to meet ADA requirements Standard
 finishes: Clear Anodize, Dark Bronze, Light Bronze, Custom finishes
 available



title
center hung auto manual

date
Jun 2018

file
CS-AM



Note:

"OA-100-CS" is approved by TUV SUD America Inc., conforming to:

UL Std. 325

ANSI/BHMA Std. A156.19

CAN. CSA Std. C22.2 #247

as manufactured by Omega Automatics

38" clear opening required to meet ADA requirements Standard

finishes: Clear Anodize, Dark Bronze, Light Bronze, Custom finishes available



title
center spindle right

date

file
CS-R

